

Sømrum er ikke inkluderet i mønstret, men skrevet som cm, der skal tilføjes før du klipper stoffet.

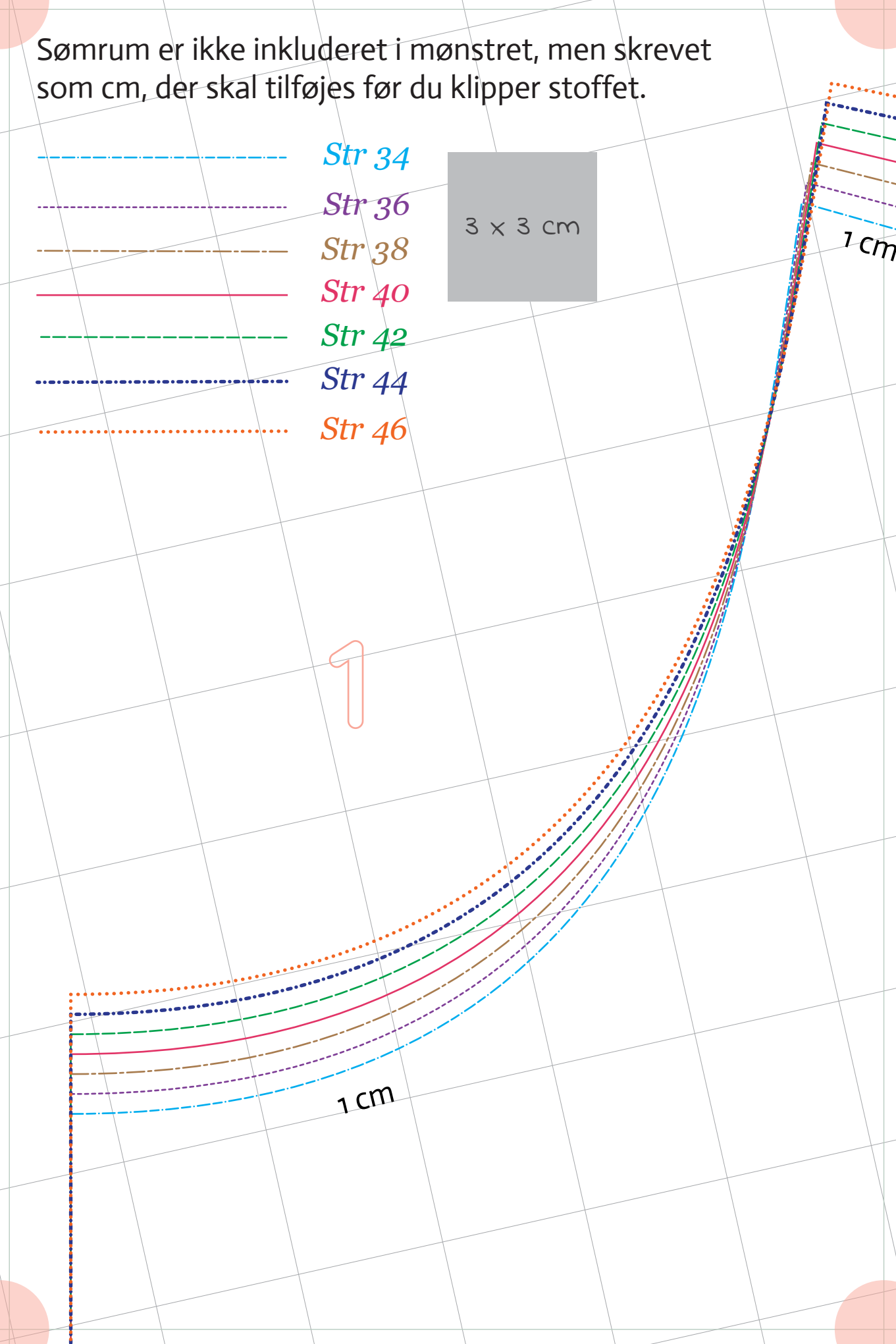
- Str 34
- Str 36
- Str 38
- Str 40
- Str 42
- Str 44
- Str 46

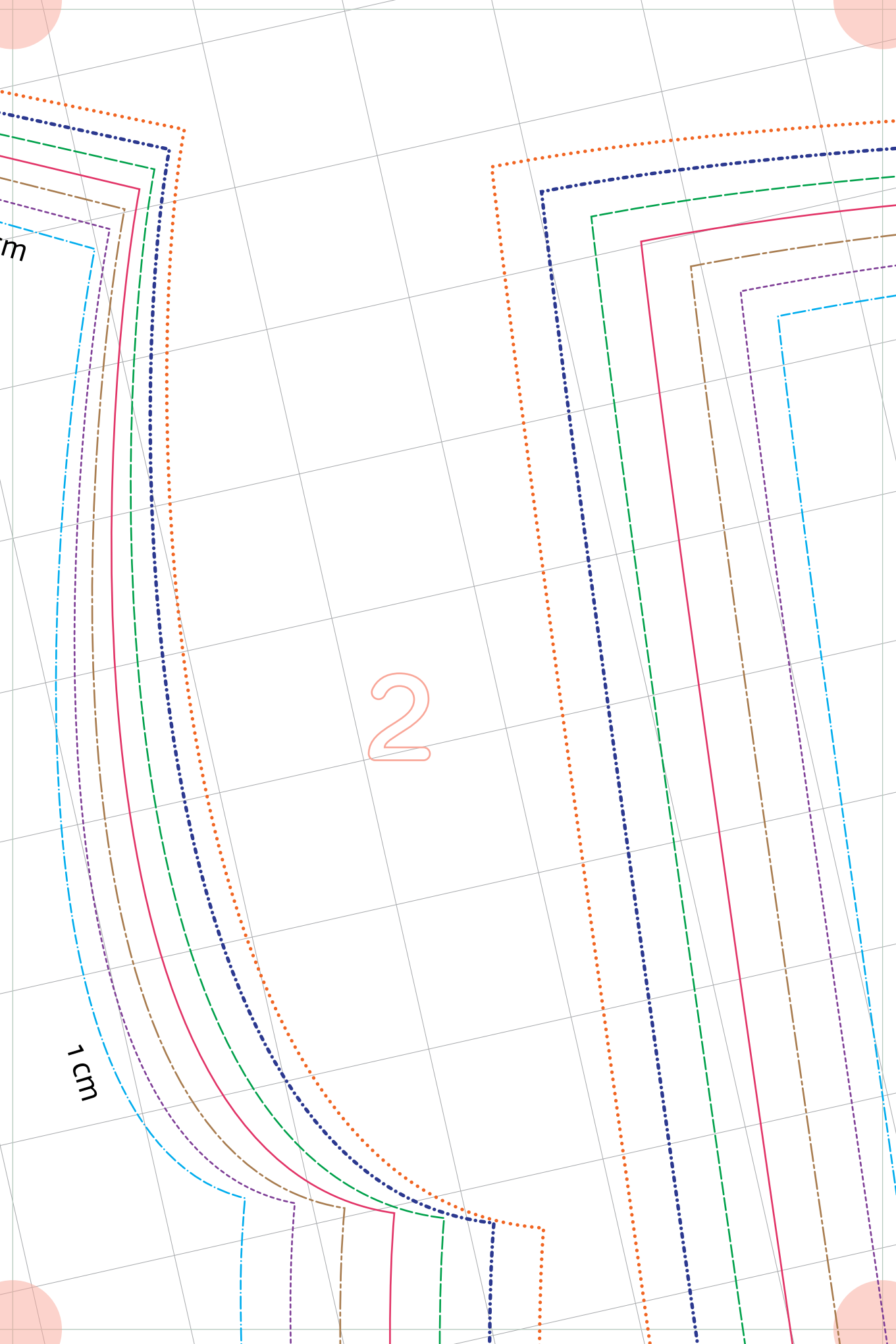
3 x 3 cm

1

1 cm

1 cm

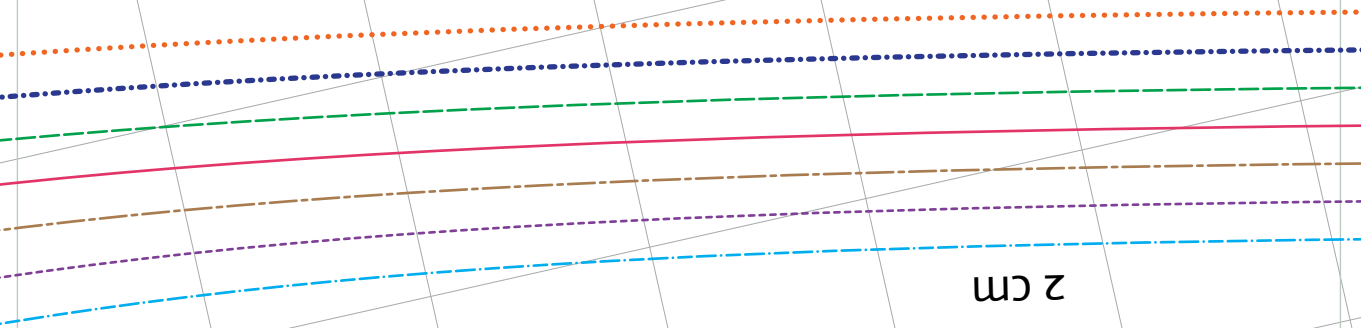




2

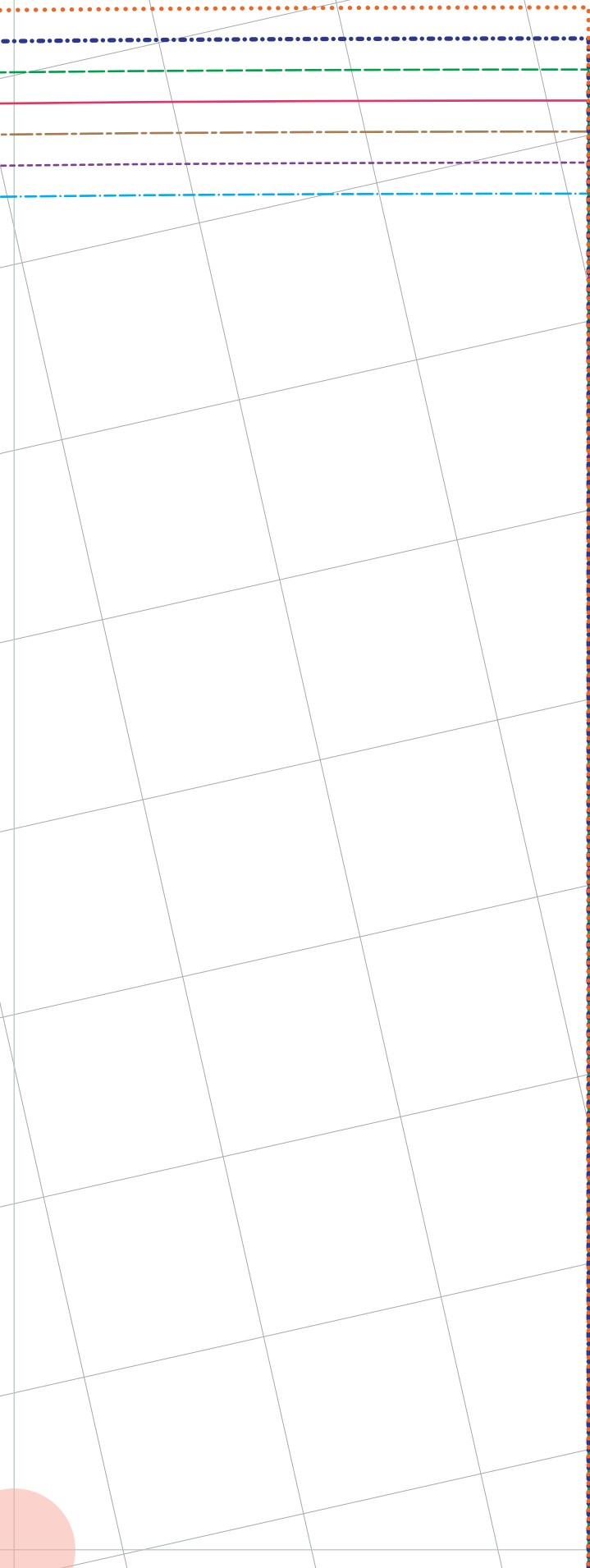
1 cm

m

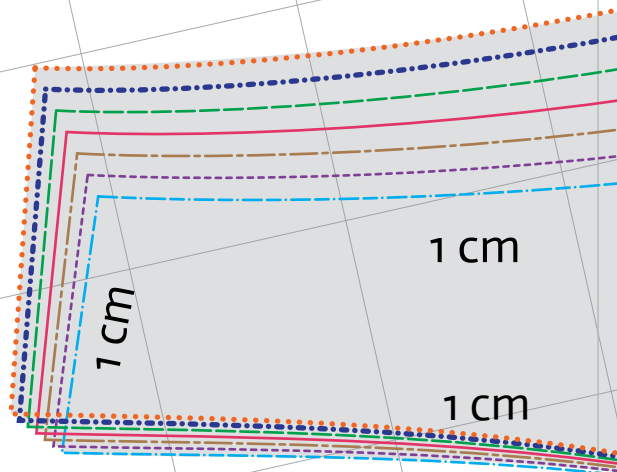


2 cm

3



4



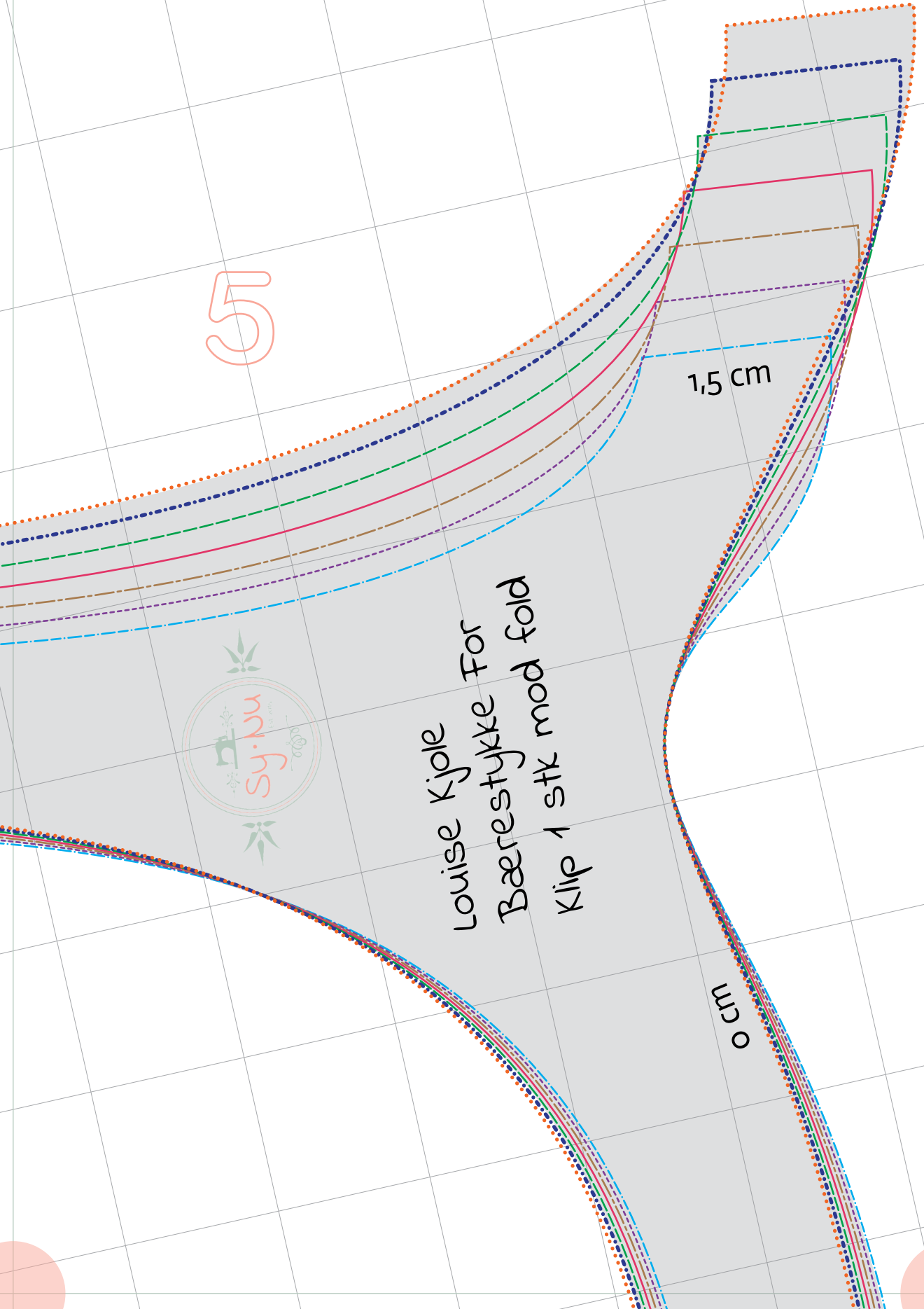
5



Louise Kjole
Bærestykke For
Klip 1 stk mod fold

1,5 cm

0 cm

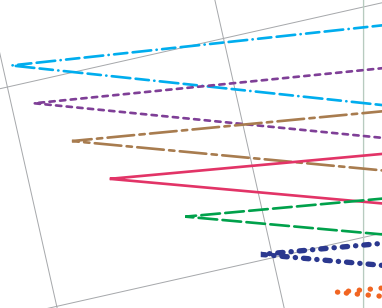


Midt For Fold Trådretning

6



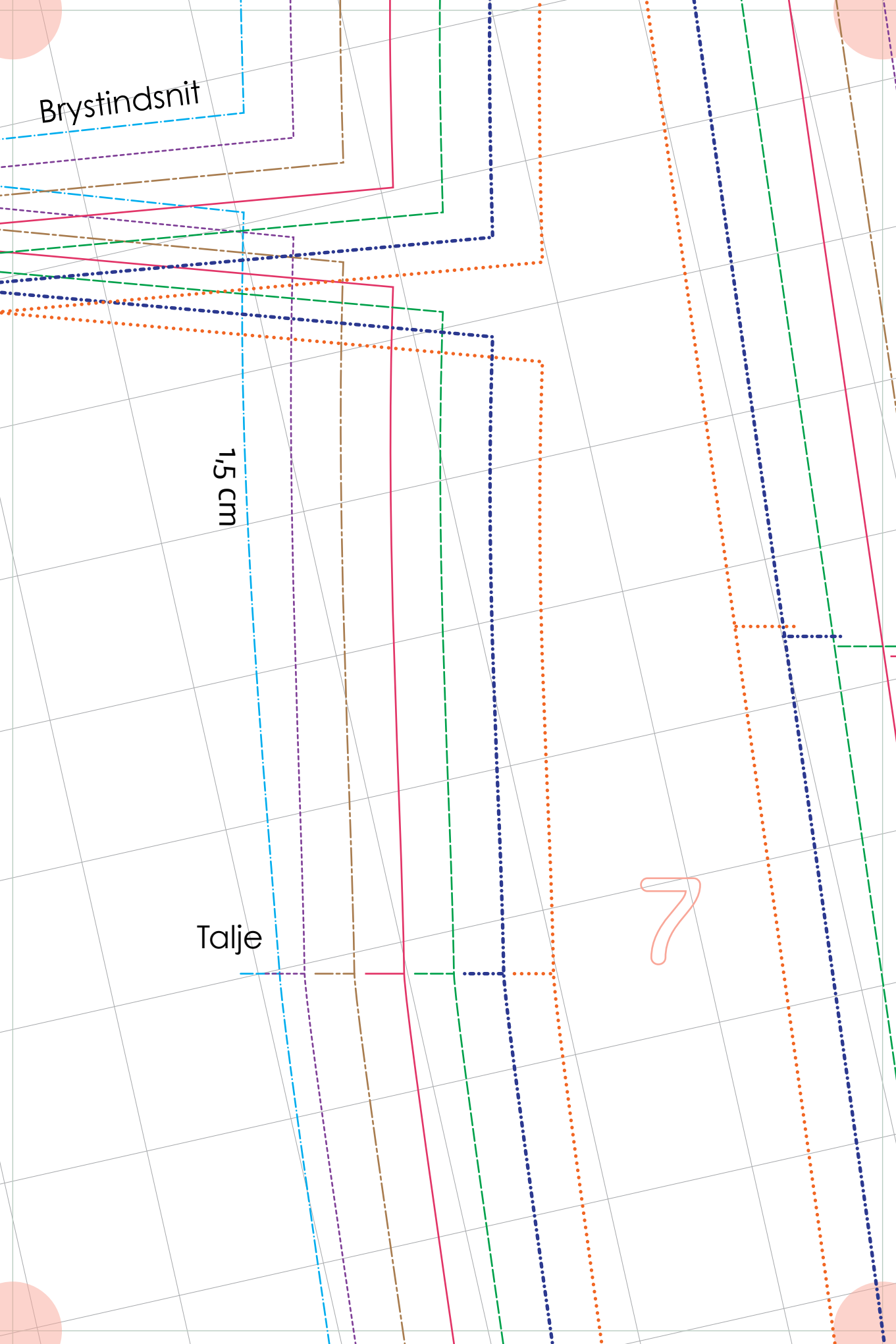
Louise Kjole
Forstykke
Klip 1 stk mod fold



Brystindsnit

1,5 cm

Talje



8

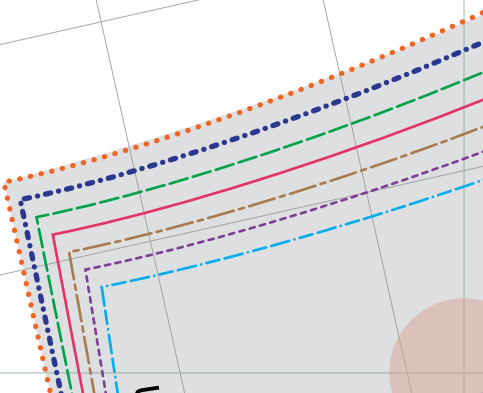
lomme

9

Midt Bag

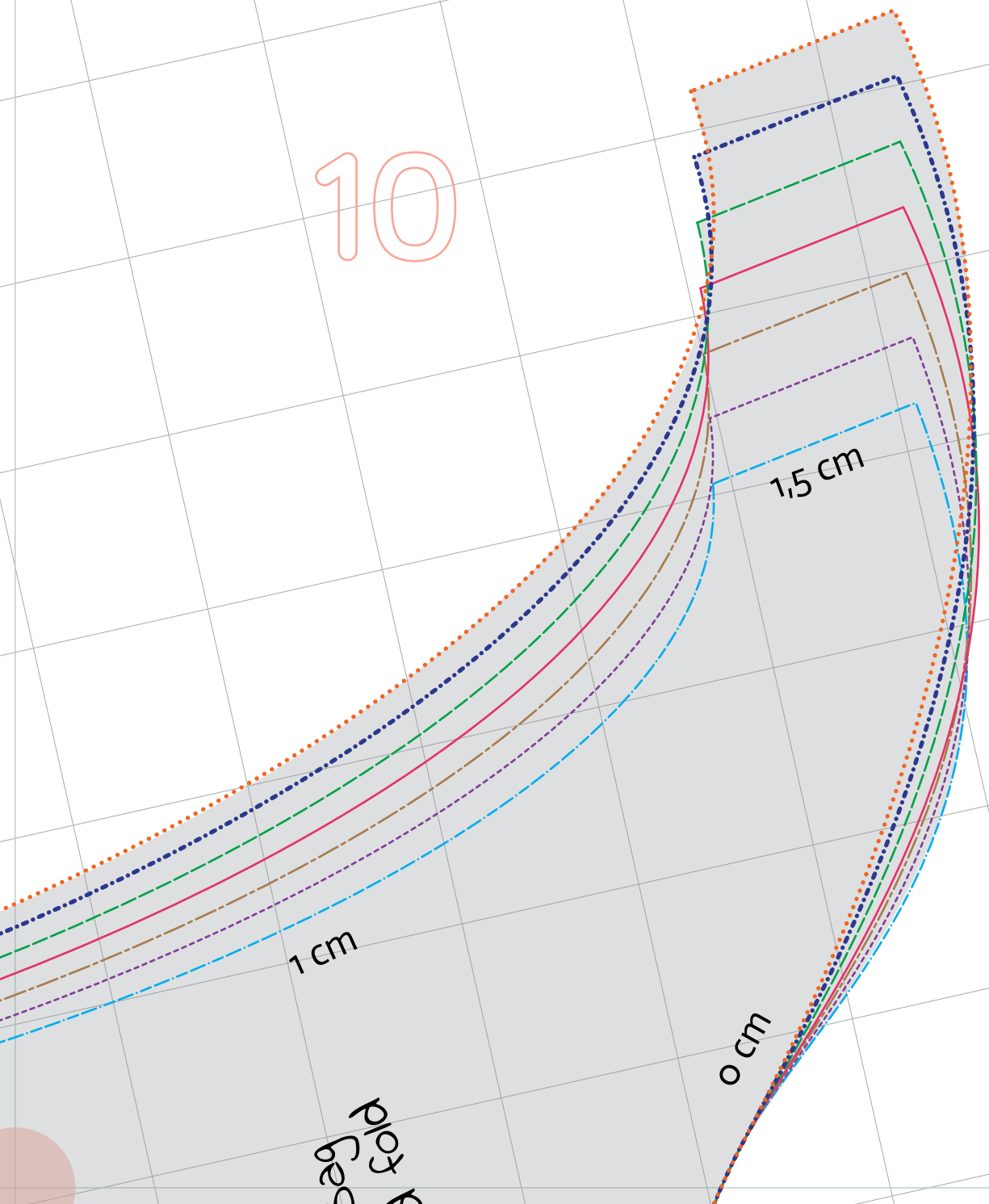
Fold

Trådretning



Midt For
Fold
Trådretning

10



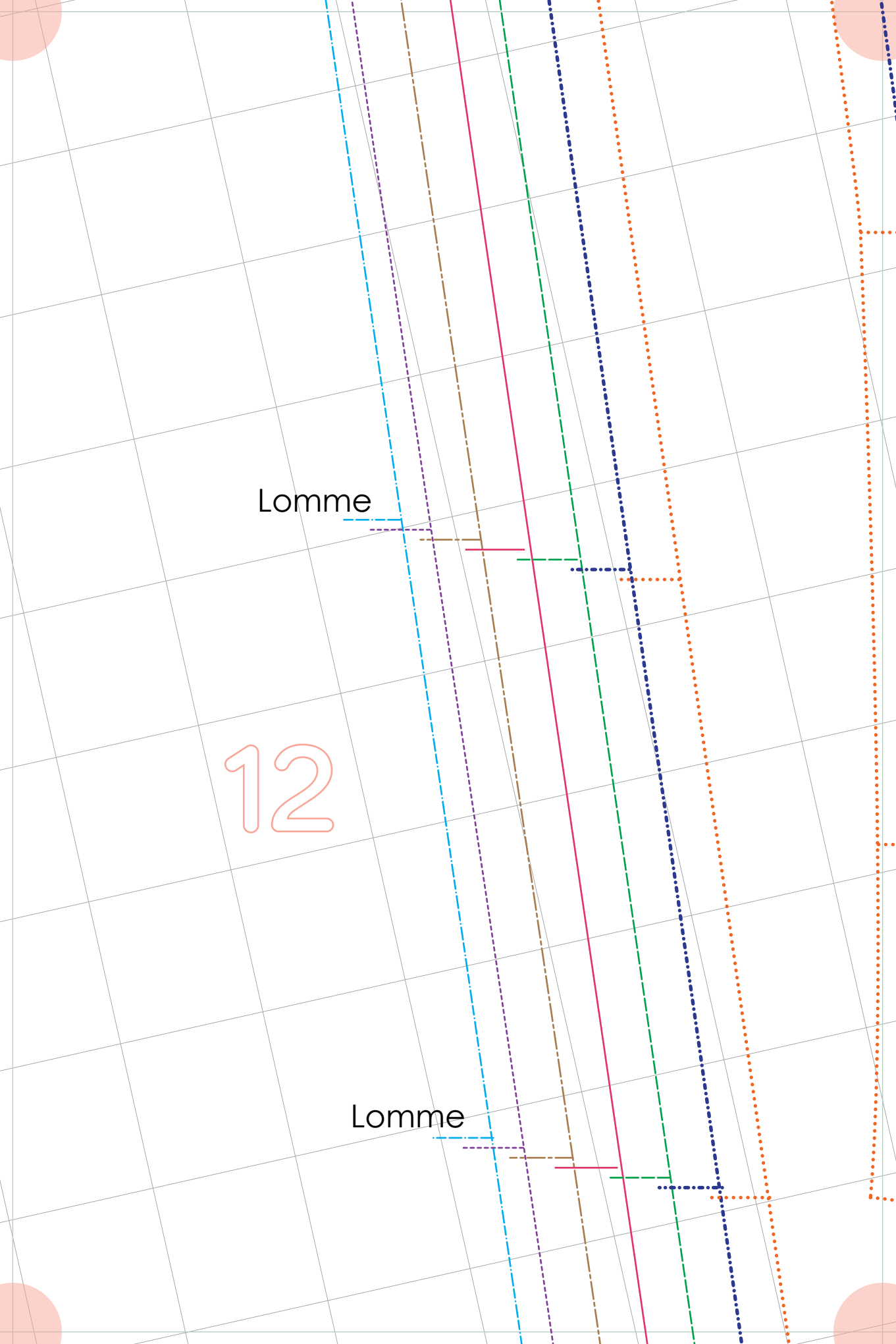
Plot for
Fold

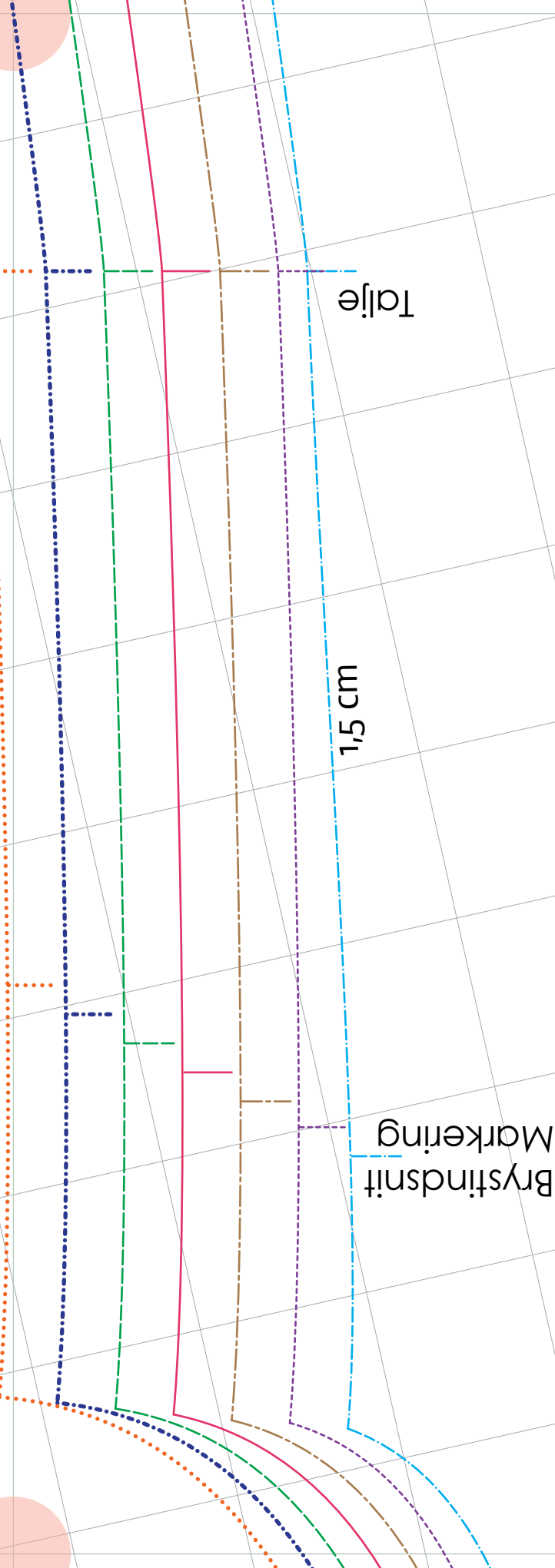
11

Lomme

12

Lomme





Louise Kjøle
 Bagsdykke
 Klip 1 stk mod fold



13

14

1 cm

1 cm



Louise Kilde
Bærestykke
1 stk
klip

1 cm

Midt Bag
Trådretning
Fold

15

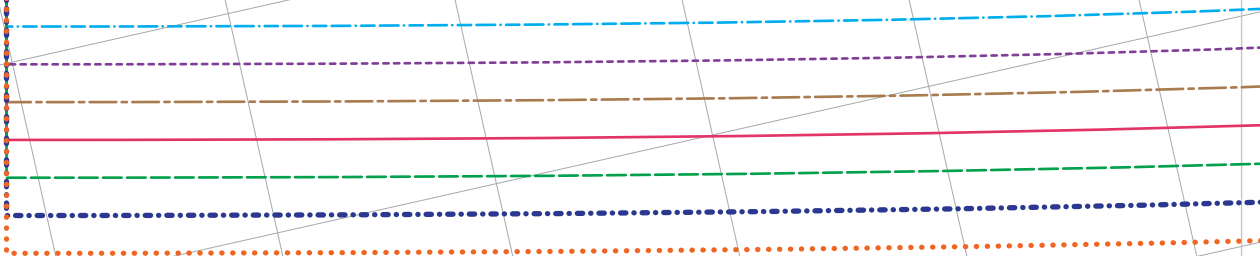
1 cm

Fold

1,5 cm

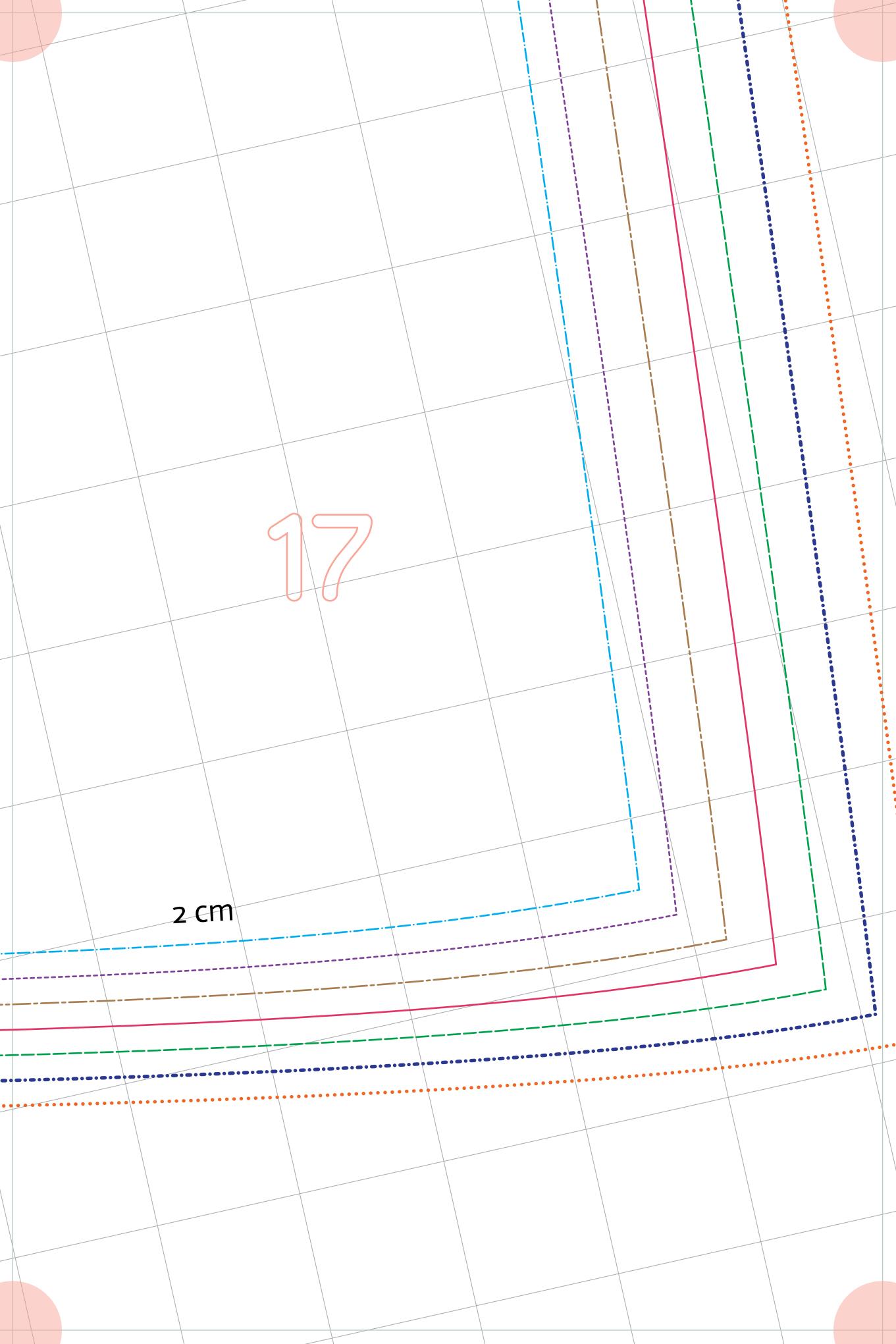


16



17

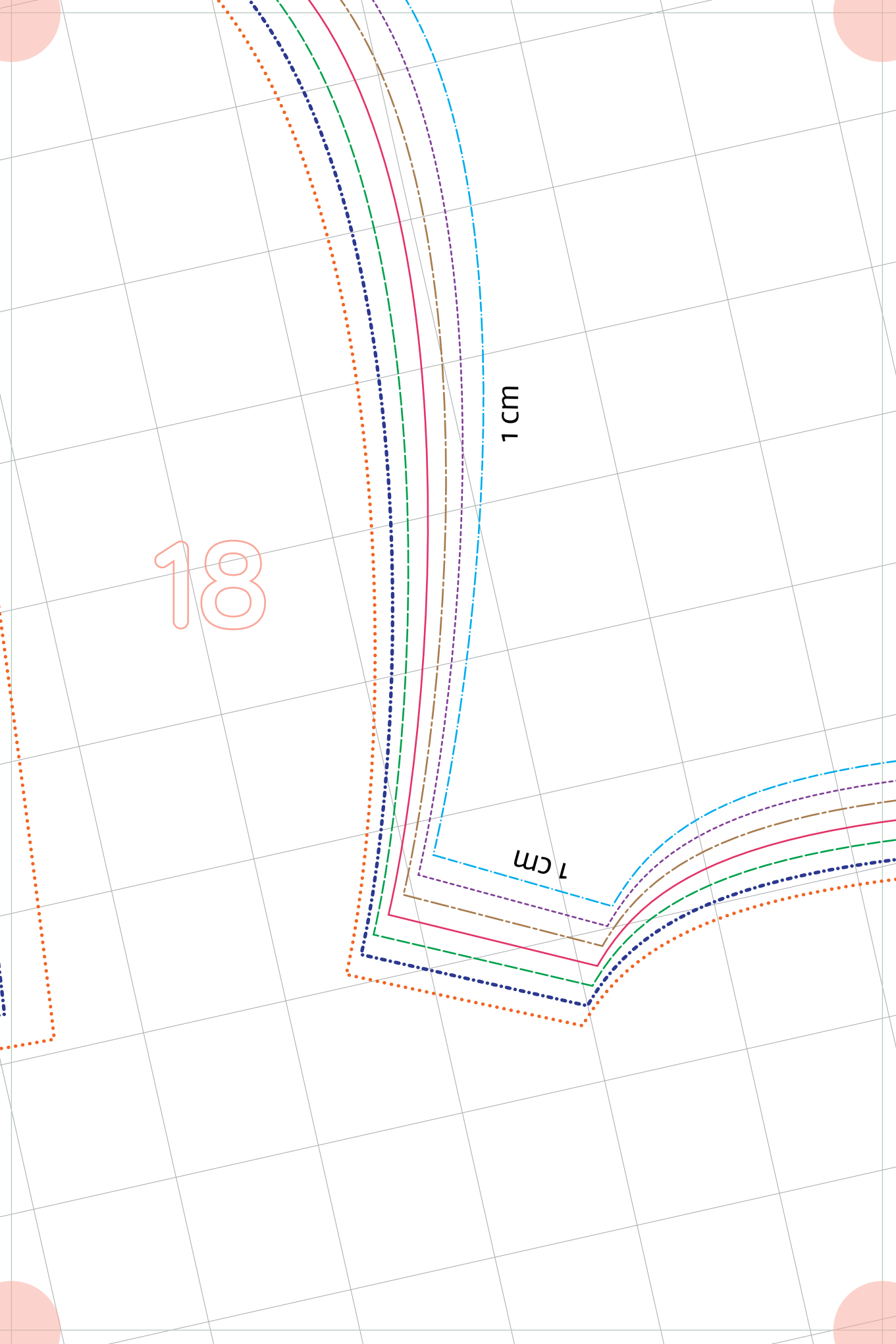
2 cm

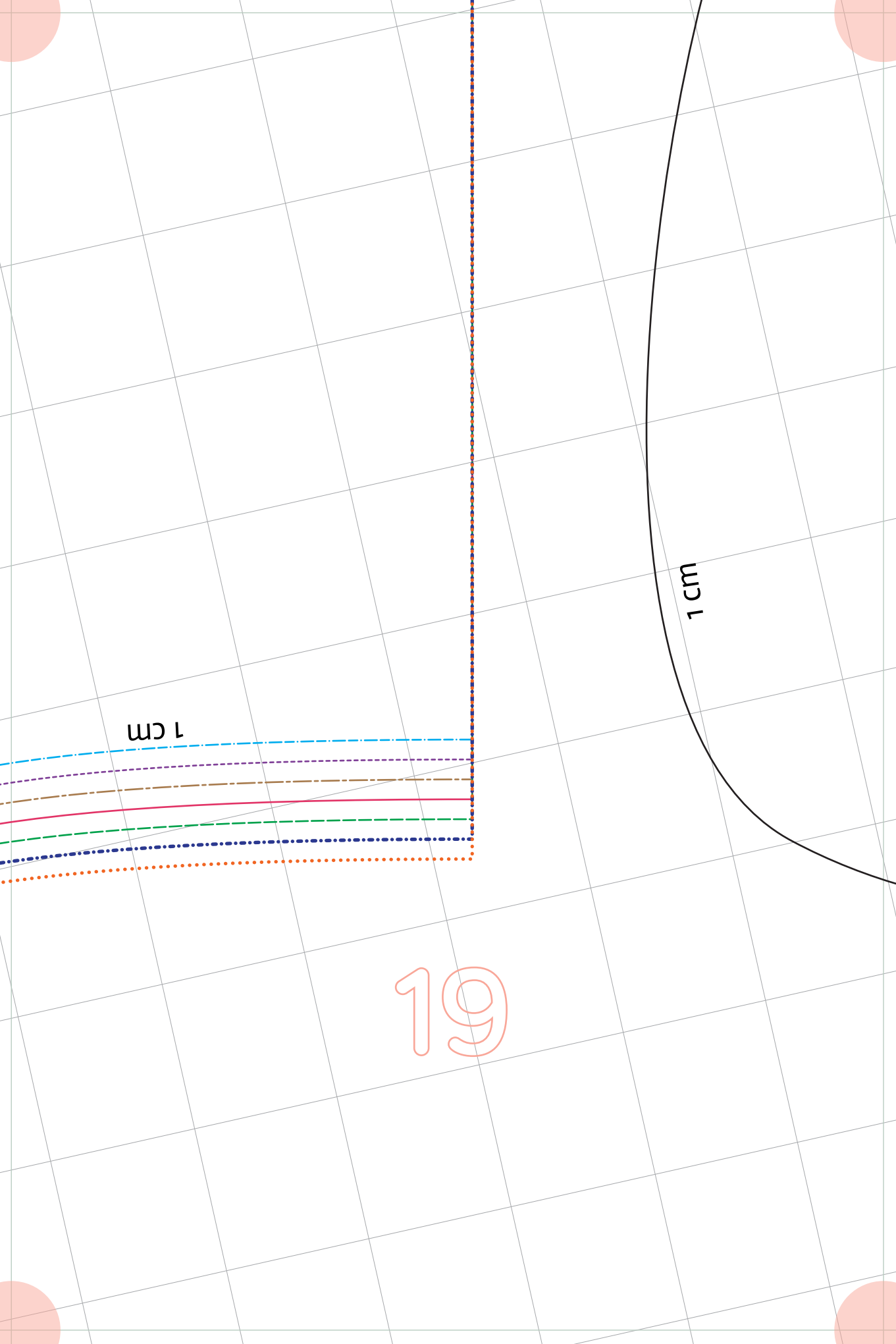


18

1 cm

1 cm

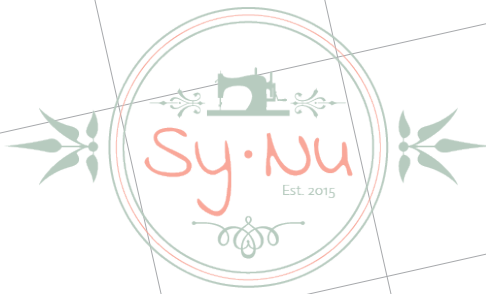




1 cm

1 cm

19



Trådretning



Louise Kjole
Lomme
Klip 2 stk

1,5 cm

20