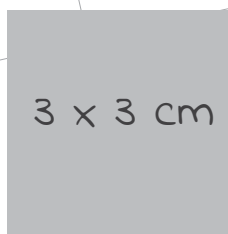
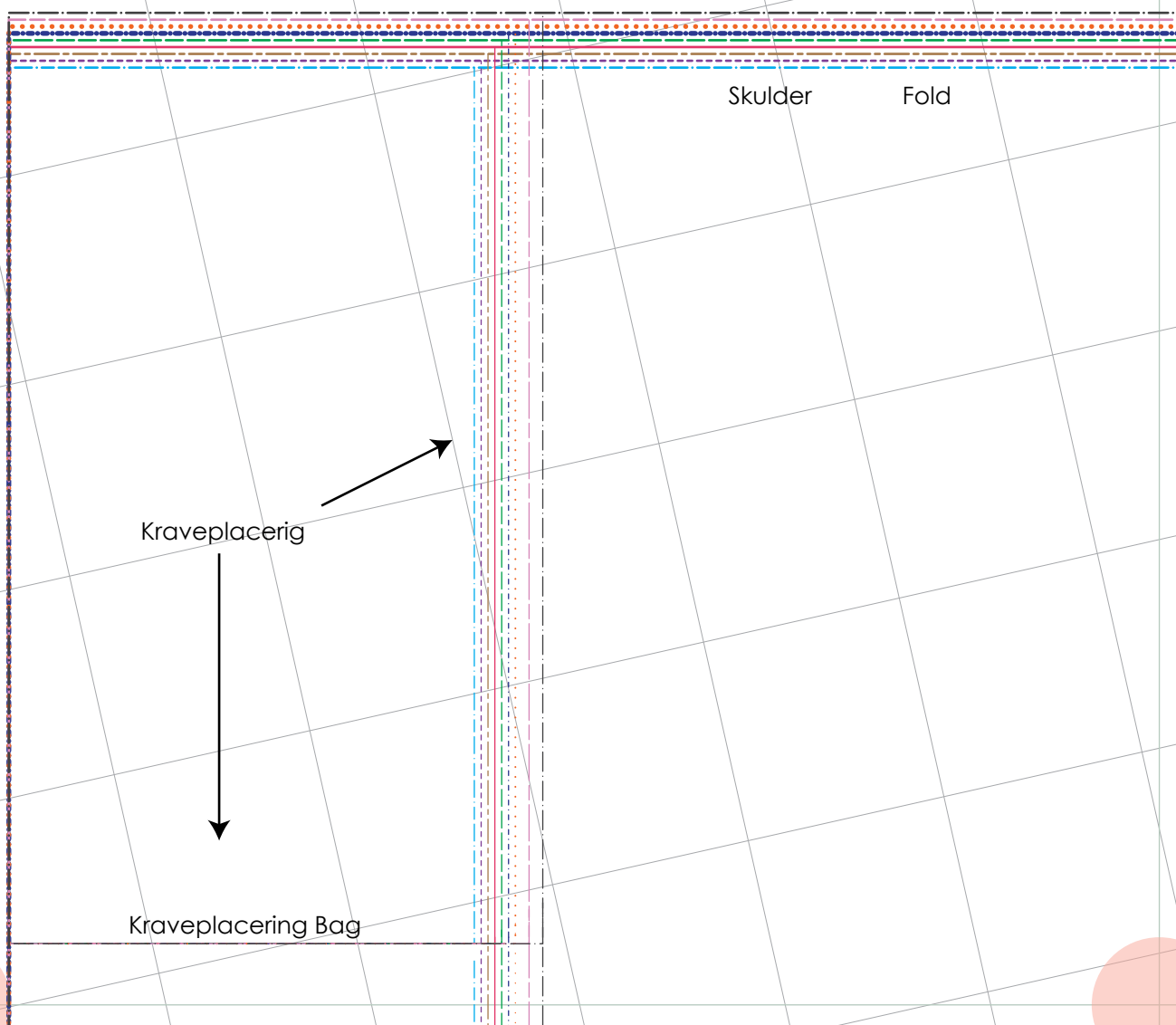
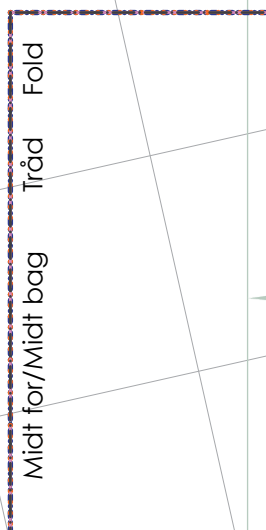


Sømrum er ikke inkluderet i mønstret, men skrevet som cm, der skal tilføjes før du klipper stoffet.

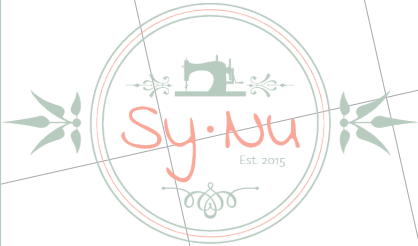
- Str 34
- Str 36
- Str 38
- Str 40
- Str 42
- Str 44
- Str 46
- Str 48
- Str 50



1



1 cm



Hansa Anorak

Ydre Belægning Forstykke/Bagstykke

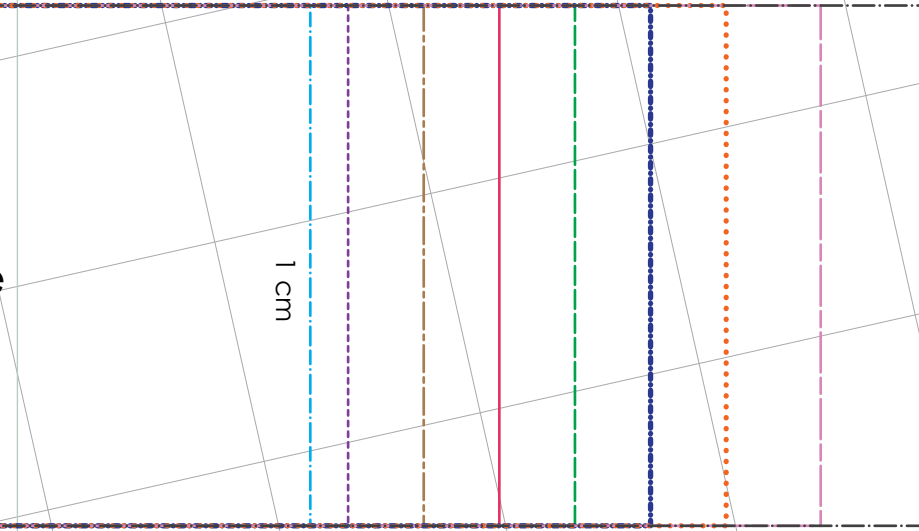
Klip x 2 mod fold

1 cm

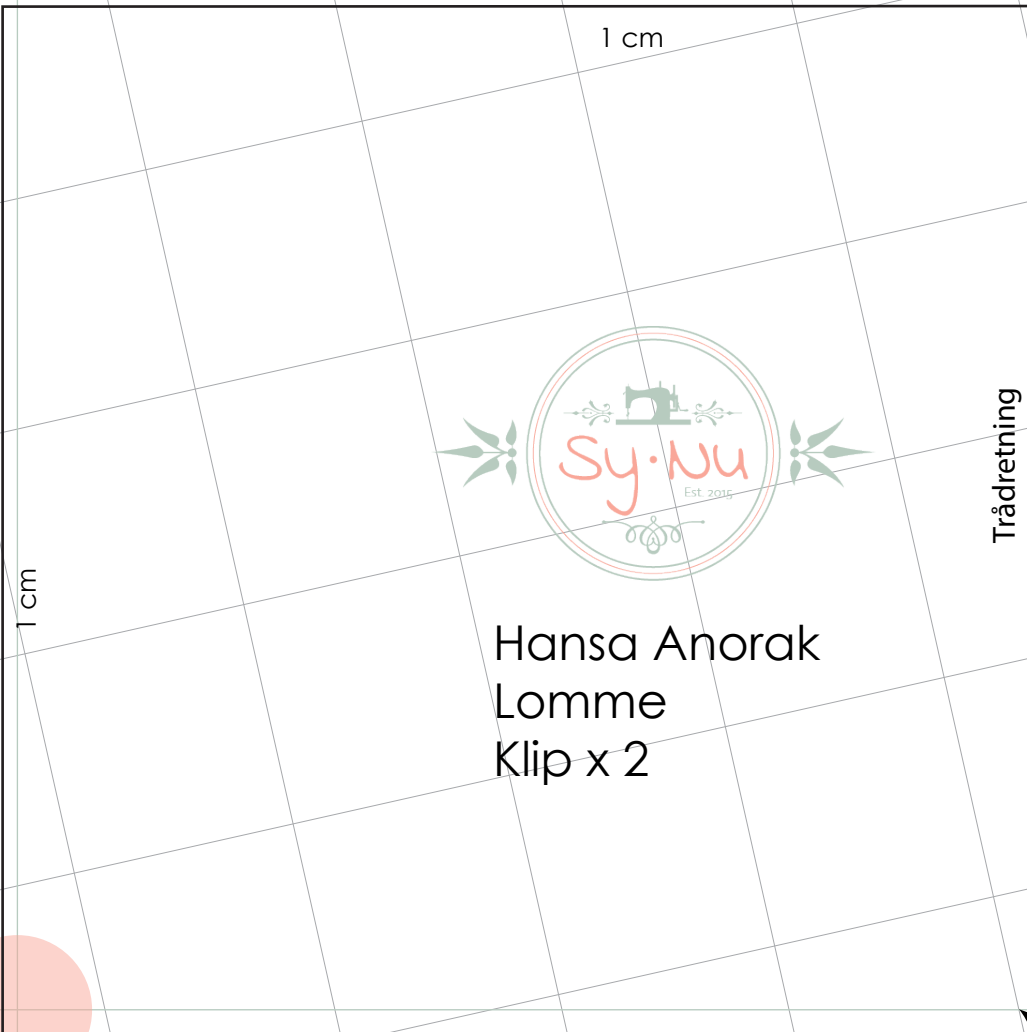
2

1 cm

1 cm



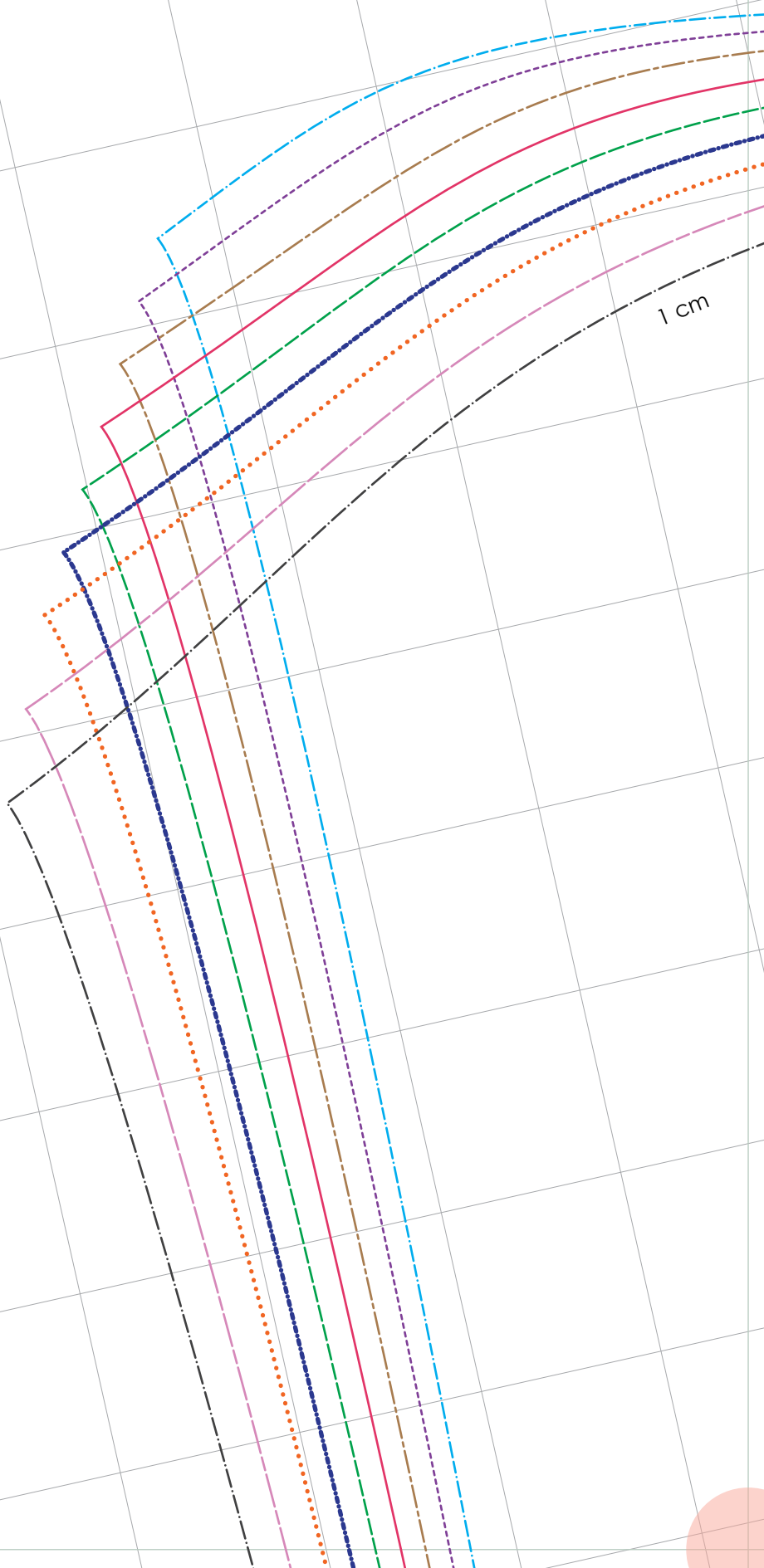
3



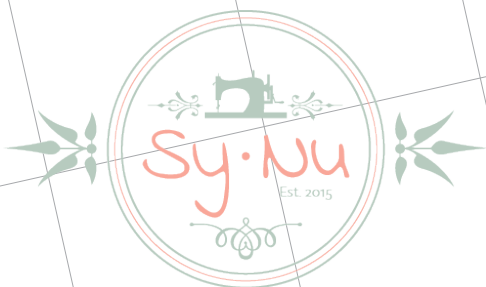
4

1 cm

1 cm



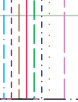
5



Trådretning

Fold

Kraveplacering For



Hansa Anorak
Forstykke + Bagstykke
Klip x 1 mod fold
(fold stoffet langs = Midt for/
derefter på tværs = Skulder)

6

Fold

Trådretning

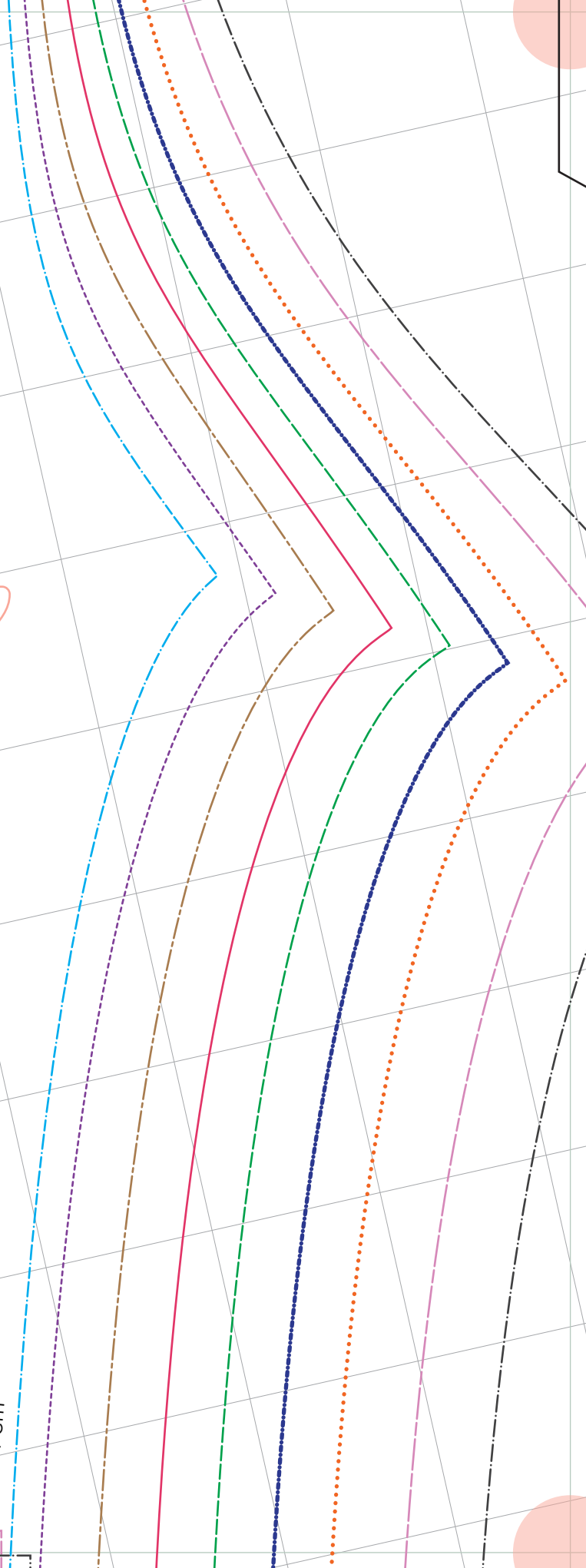
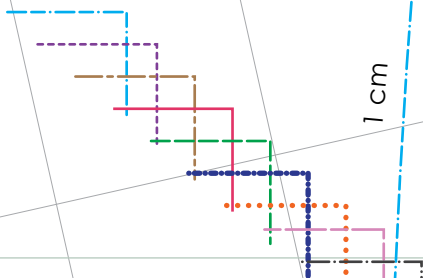
Midt for/Midt bag

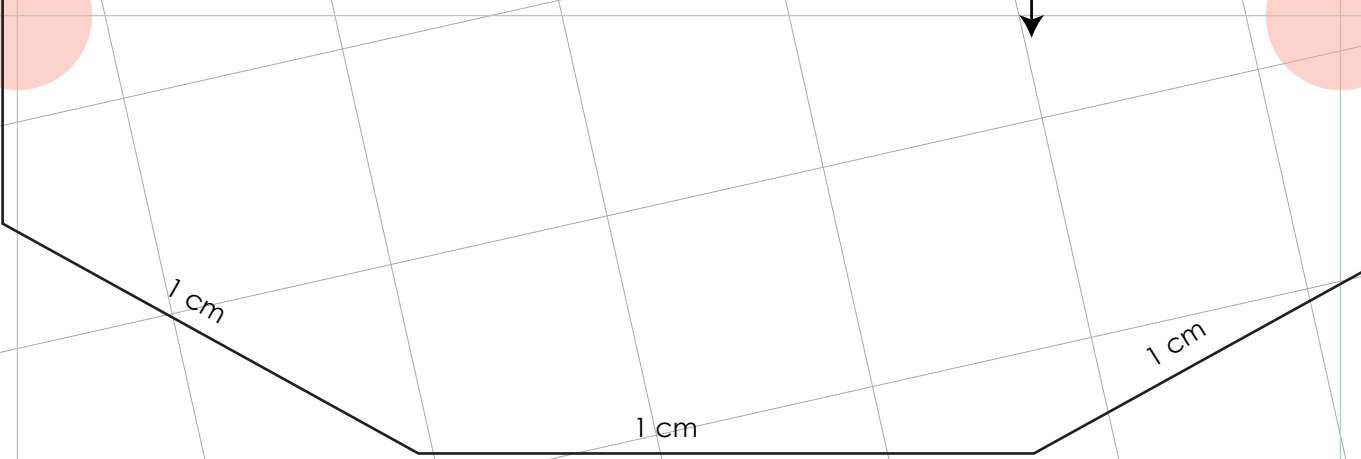


or/Midt bag
(r)

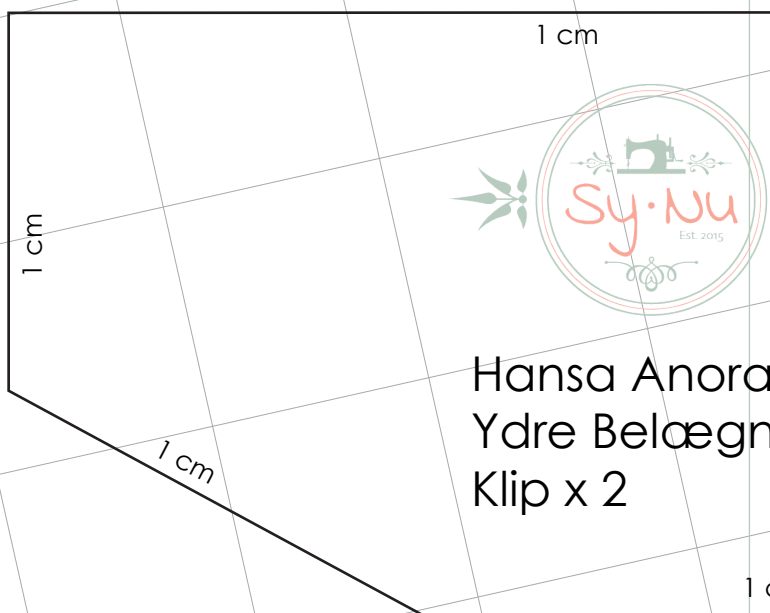


1 cm

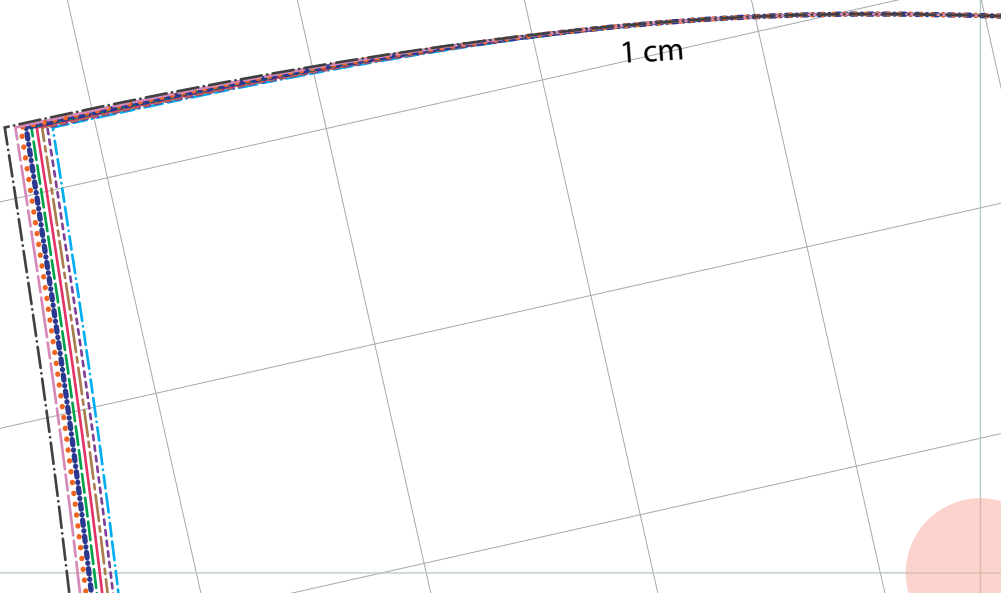




8



Hansa Anora
Ydre Belægn
Klip x 2

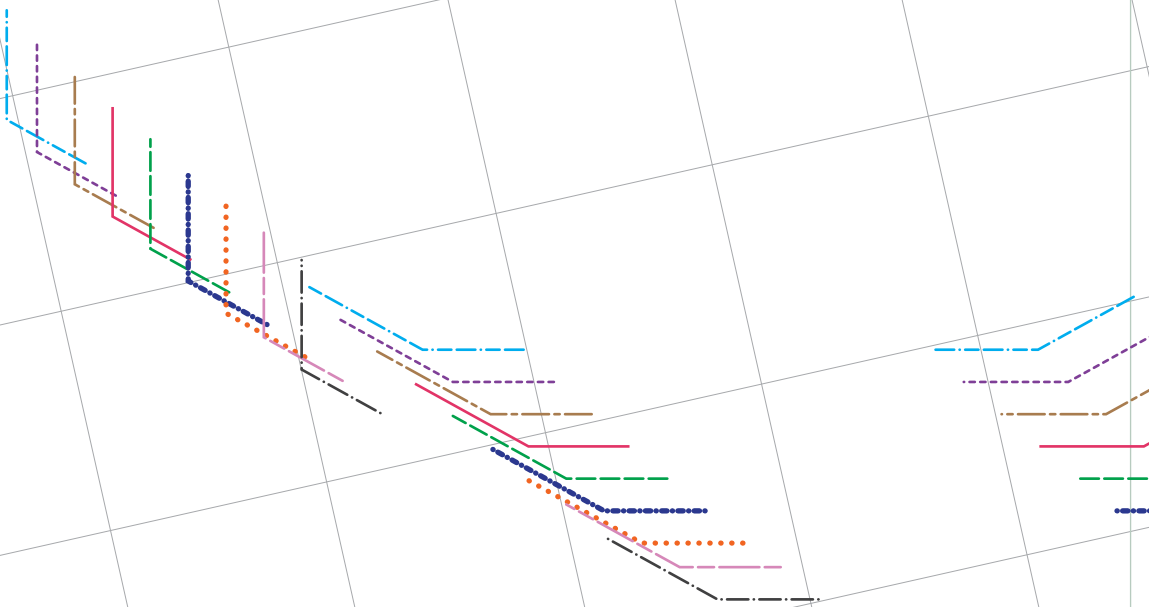


Hansa Anorak
Ærme
Klip x 2 mod fold

10

Lommeplacering

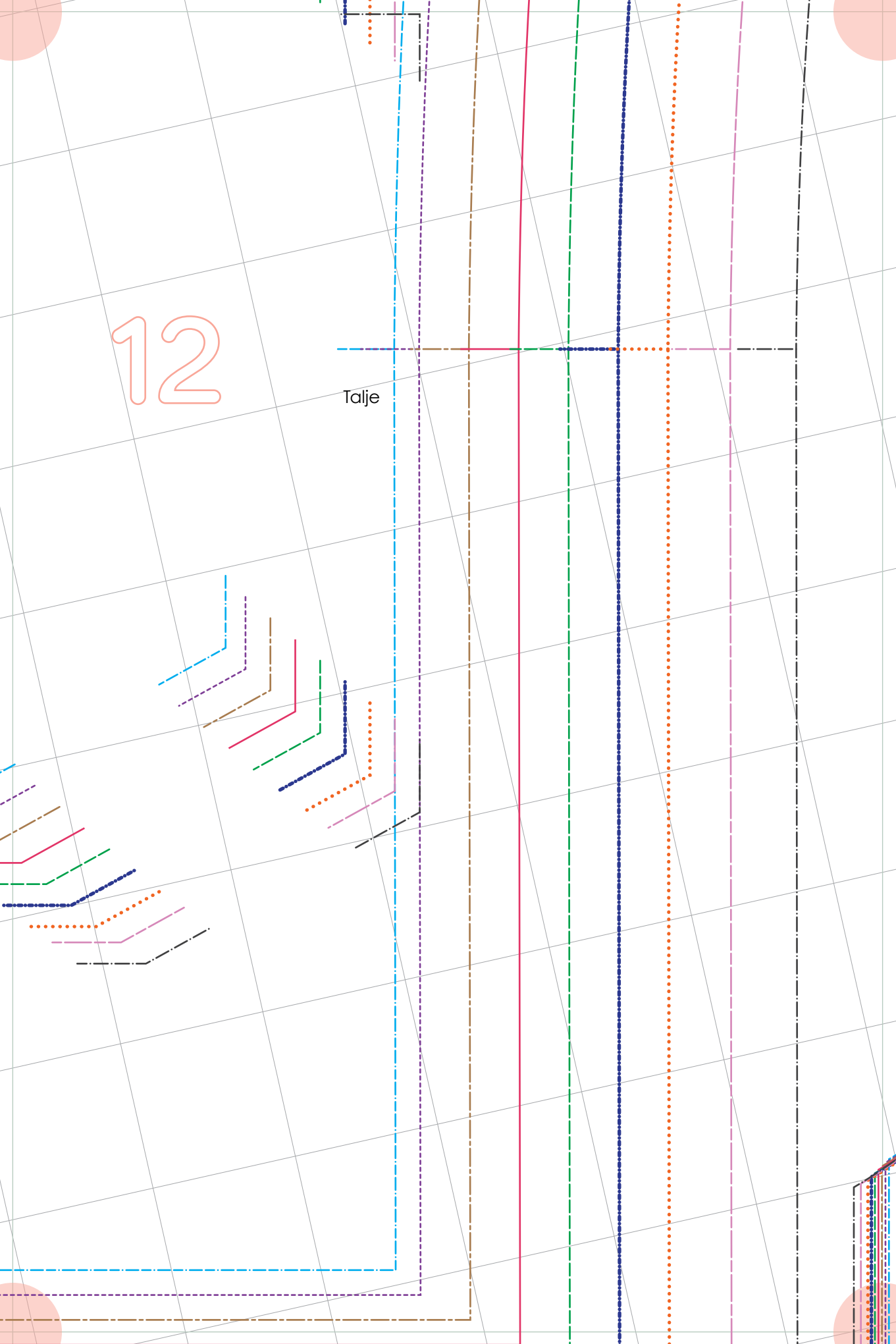
11

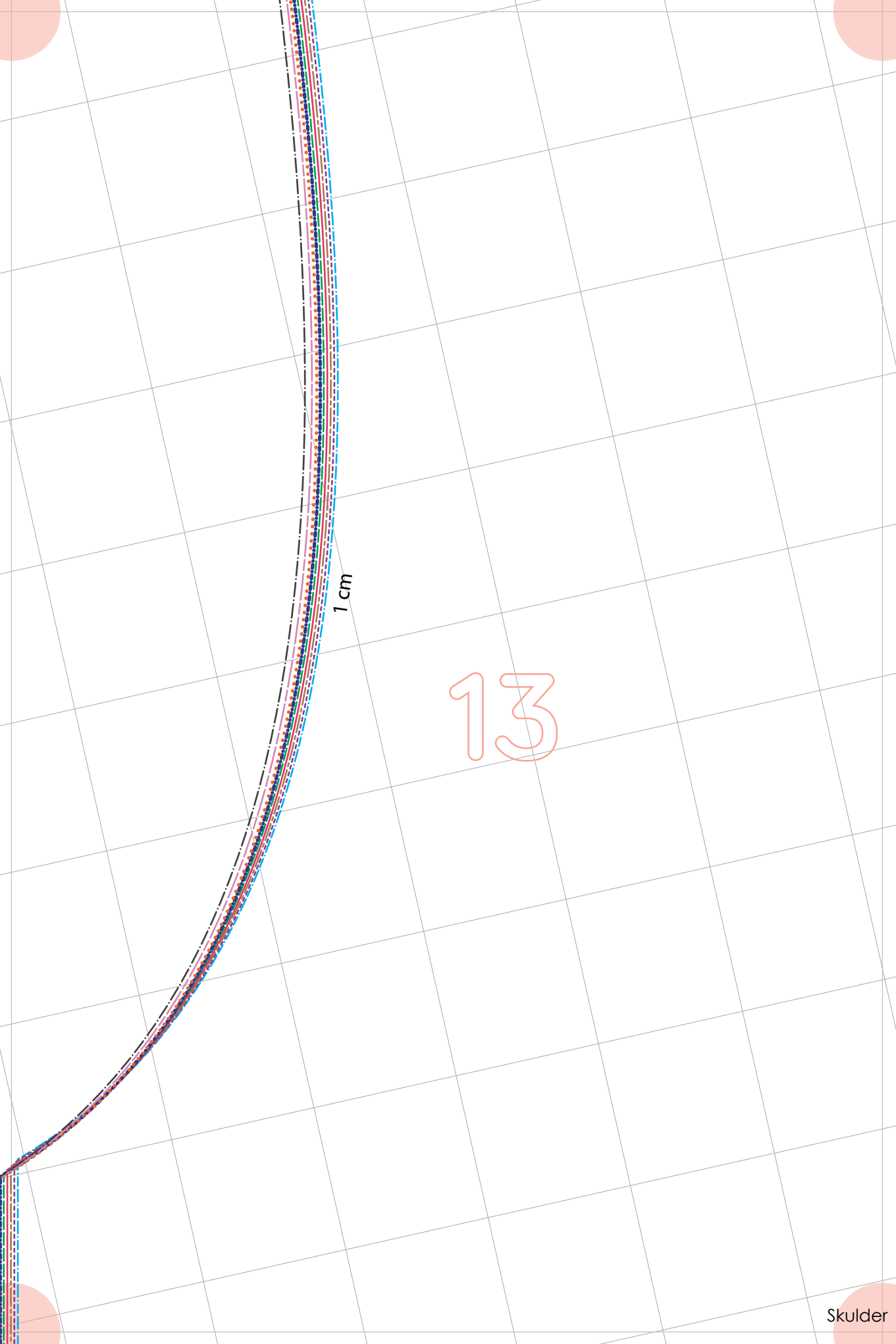


1 cm

12

Talje





1 cm

13



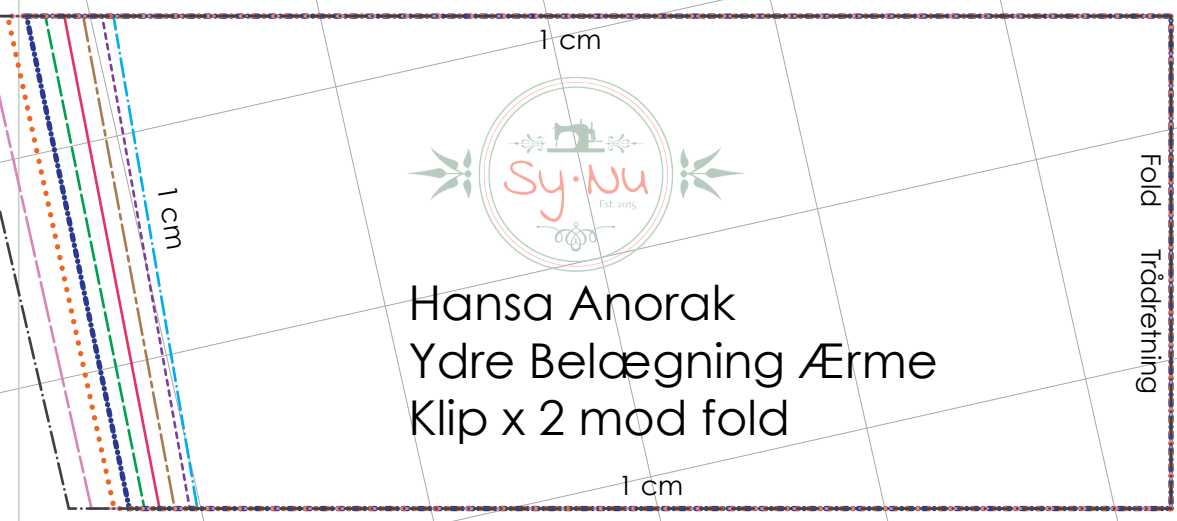
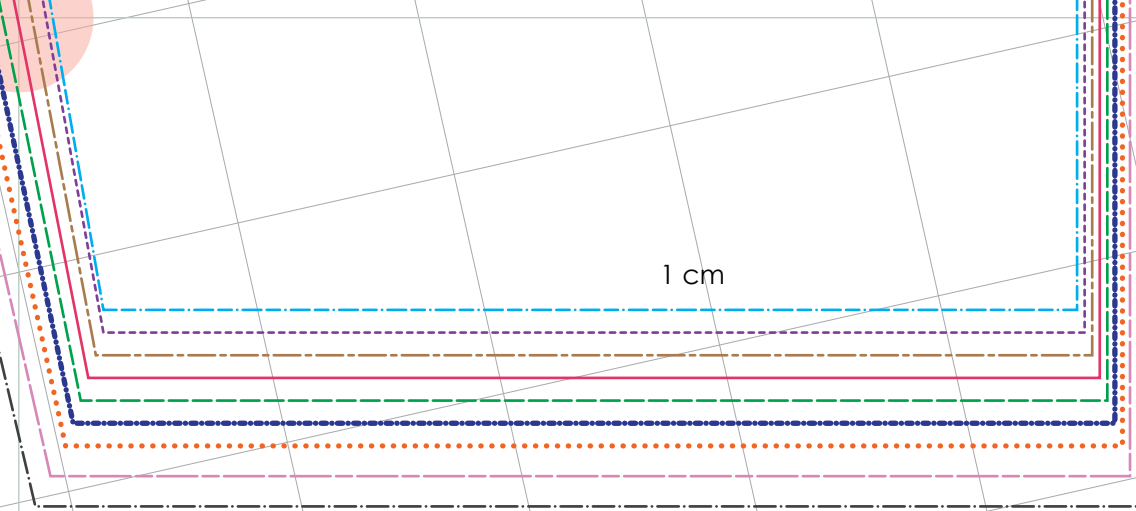
Hansa Anorak
Hætte
Klip x 1 mod fold midt bag

14

Midt bag

Fold

Trådretning



15

16

Midt for Trådretning 1 cm

1 cm

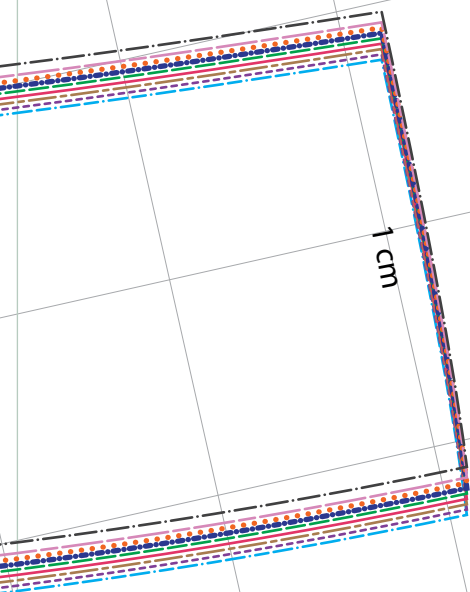
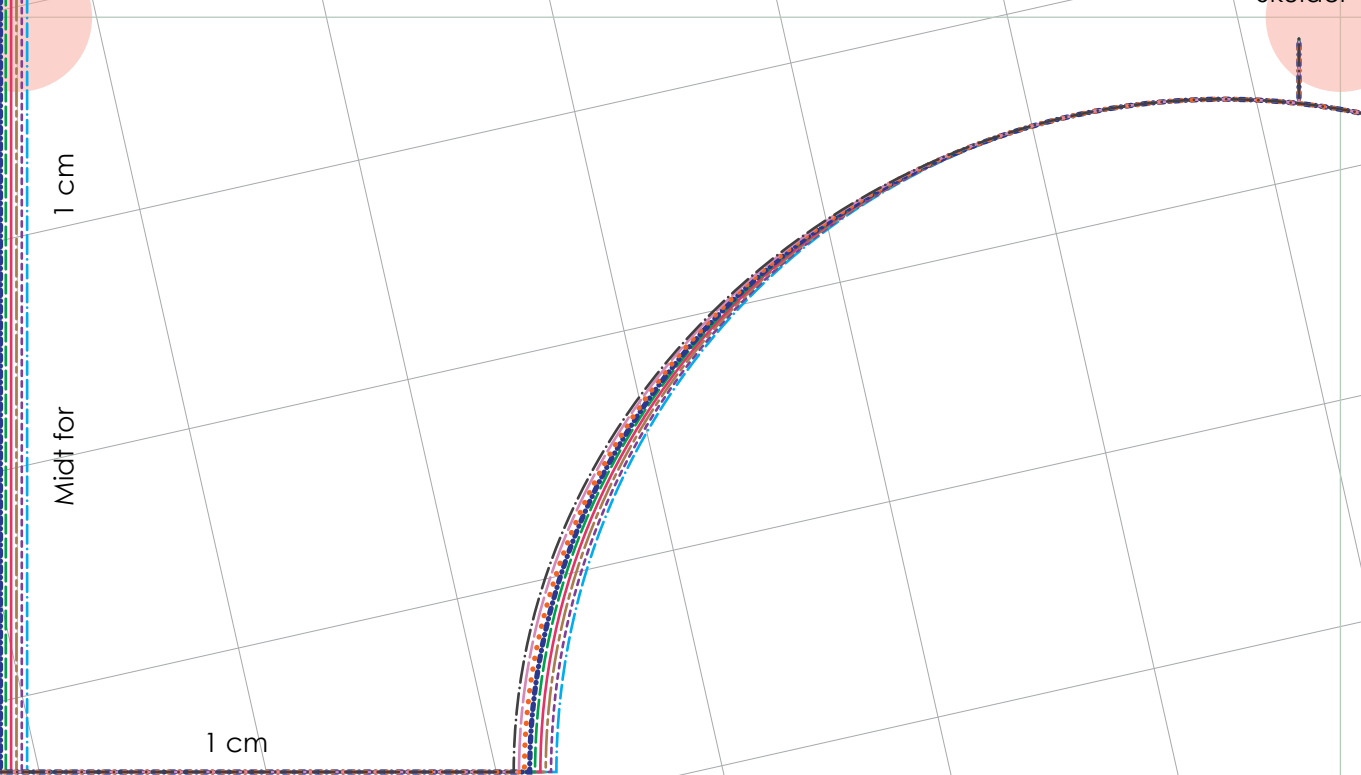


17

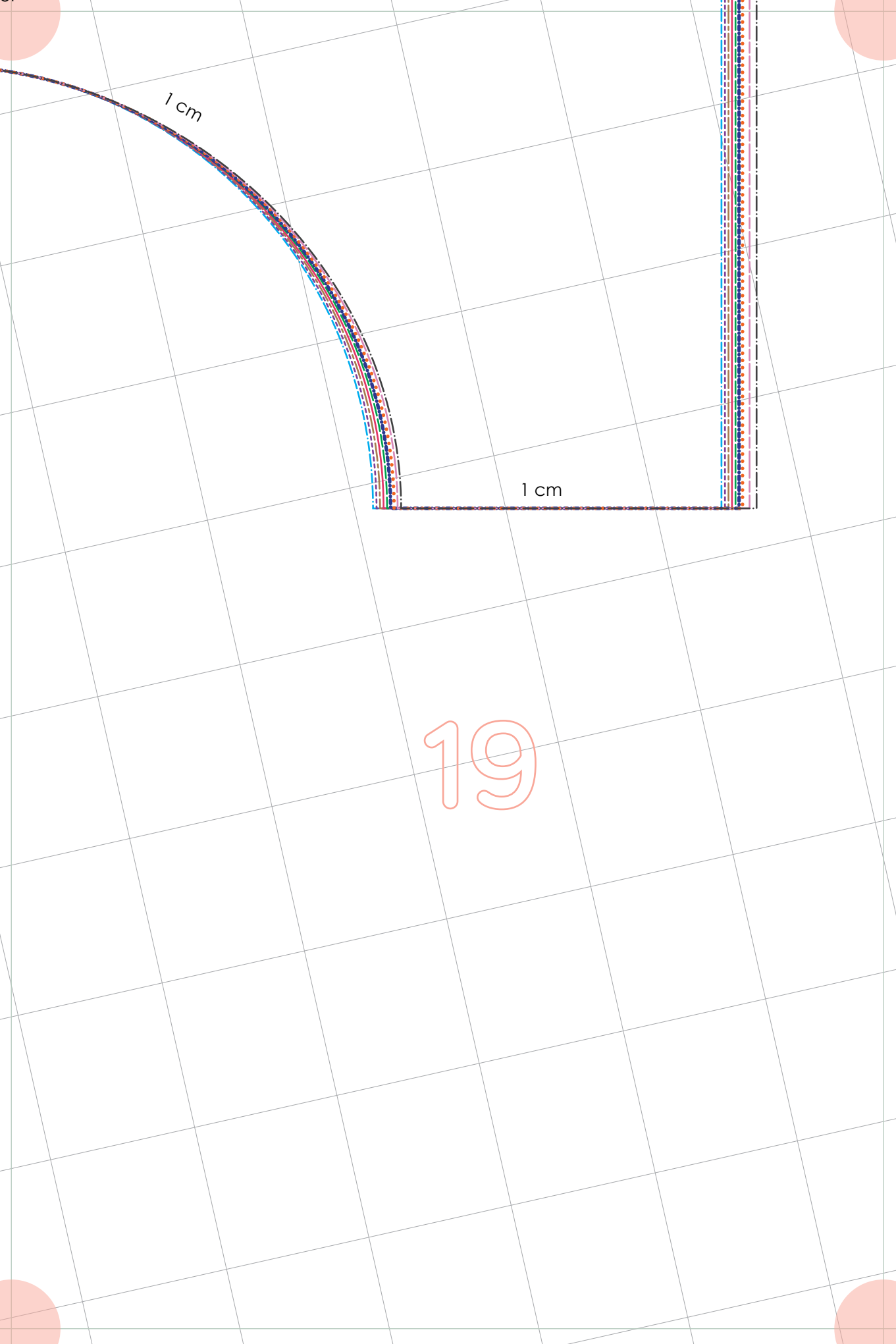
1 cm

Hansa Anorak
Hætte belægning
Klip x 2





18



1 cm

1 cm

19