








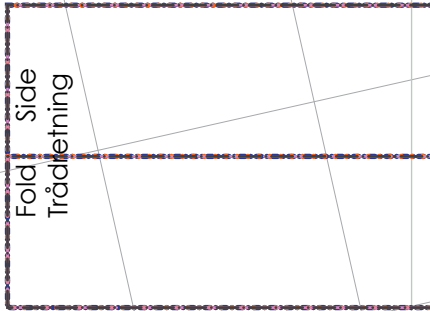
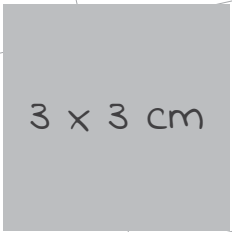
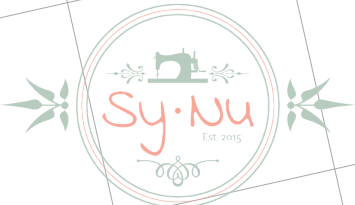
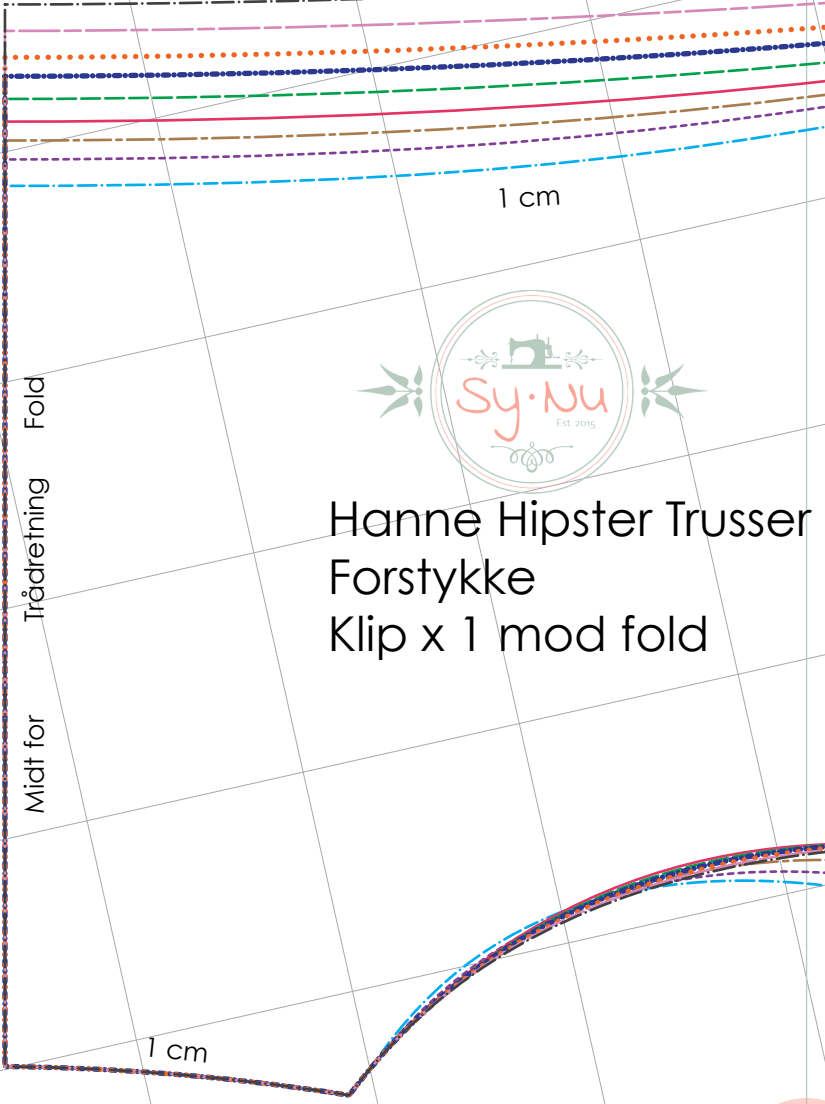


Sømrum er ikke inkluderet i mønstret, men skrevet som cm, der skal tilføjes før du klipper stoffet.

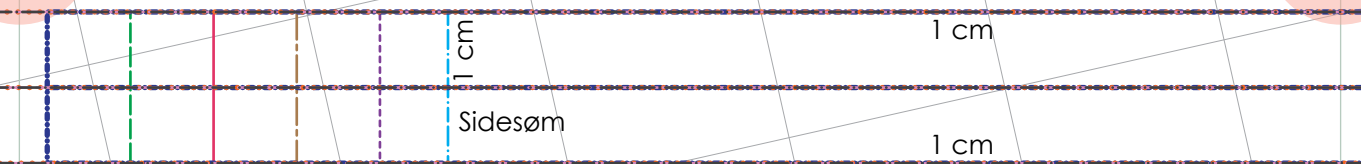
-  *Str 34*
-  *Str 36*
-  *Str 38*
-  *Str 40*
-  *Str 42*
-  *Str 44*
-  *Str 46*
-  *Str 48*
-  *Str 50*



1



Hanne Hipster Trusser  
Forstykke  
Klip x 1 mod fold



1 cm



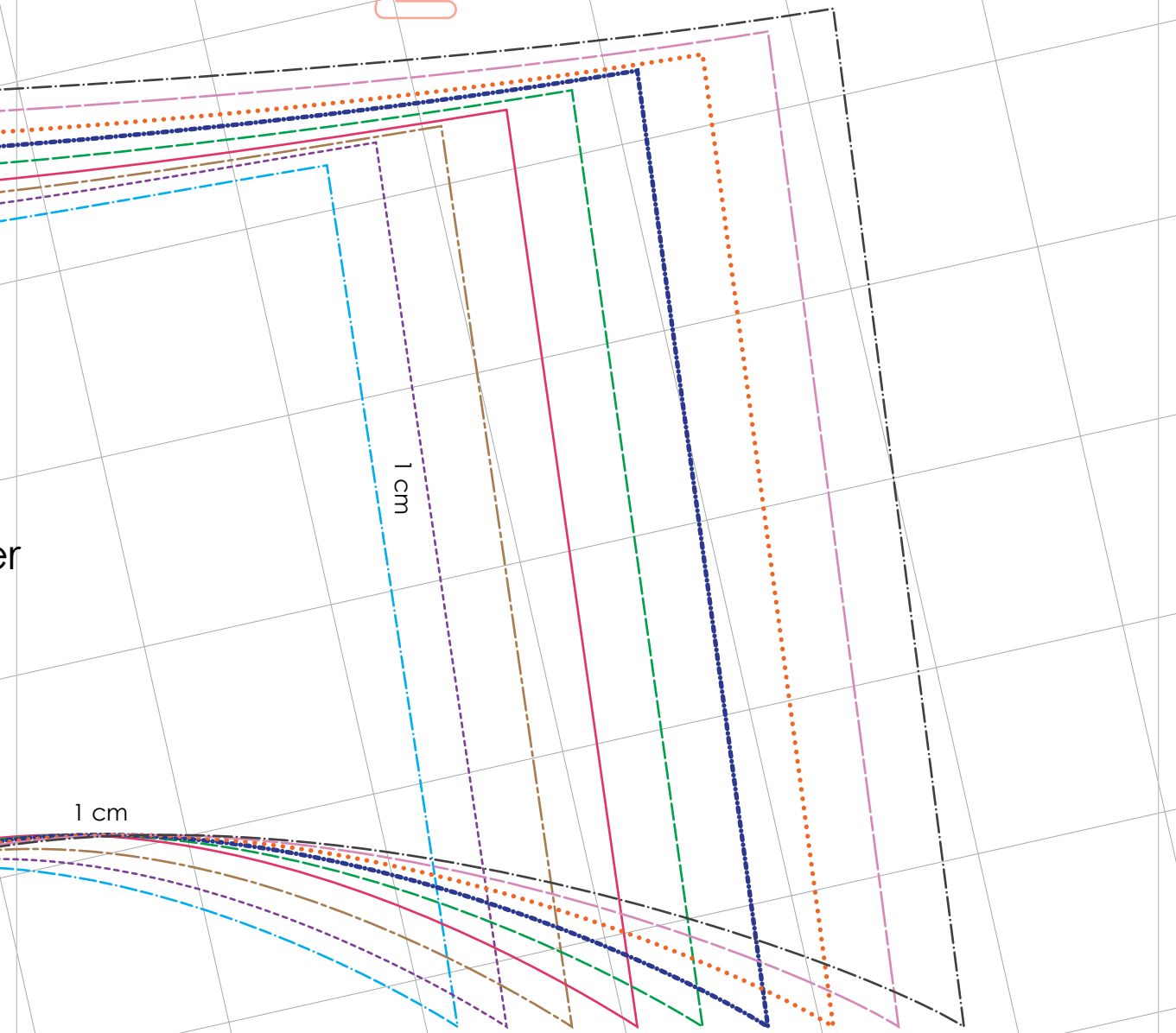
# Hanne Hipster Trusser

## Rib foroven

### Klip x 1 mod fold

1 cm

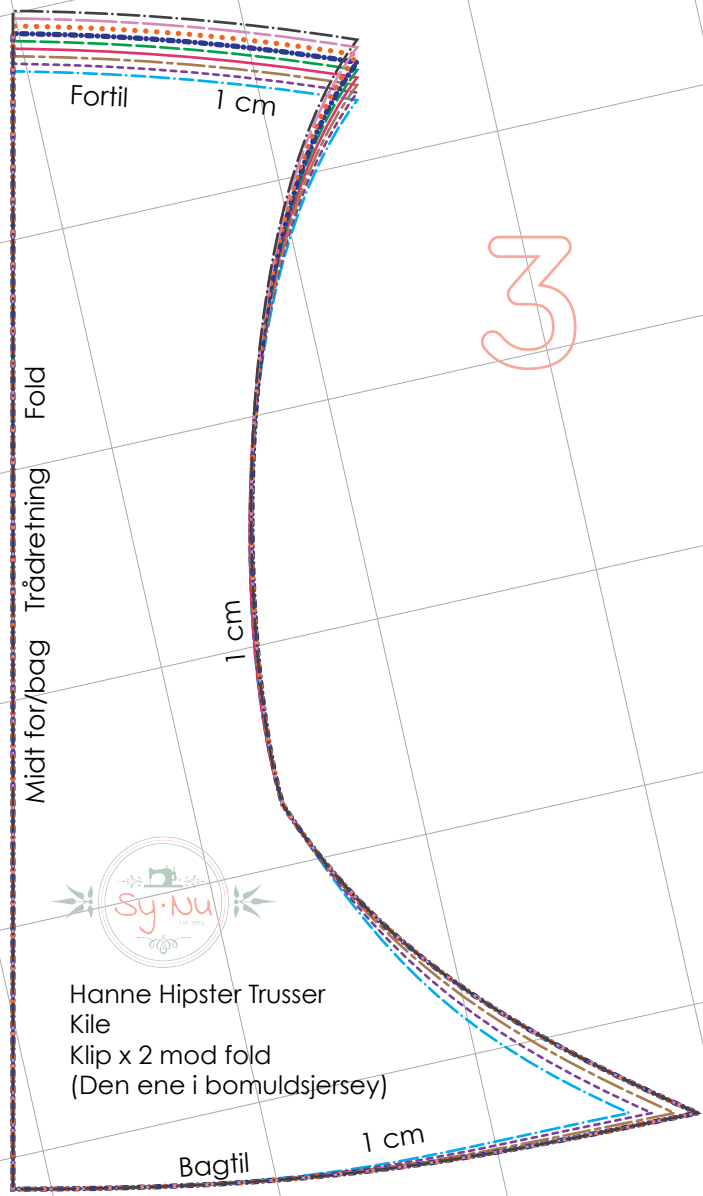
2



1 cm

1 cm

side  
1 cm

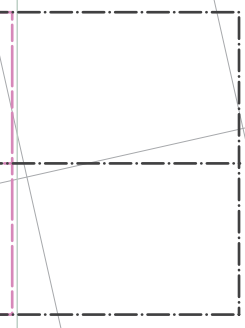
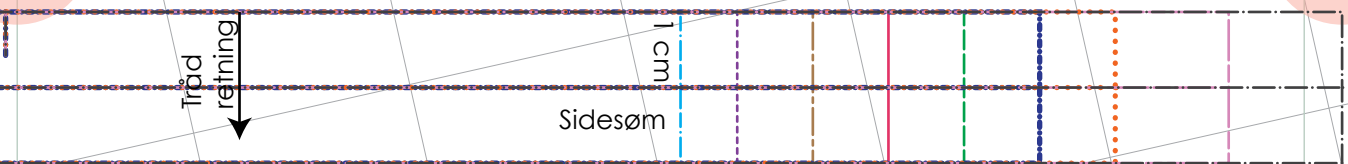


3

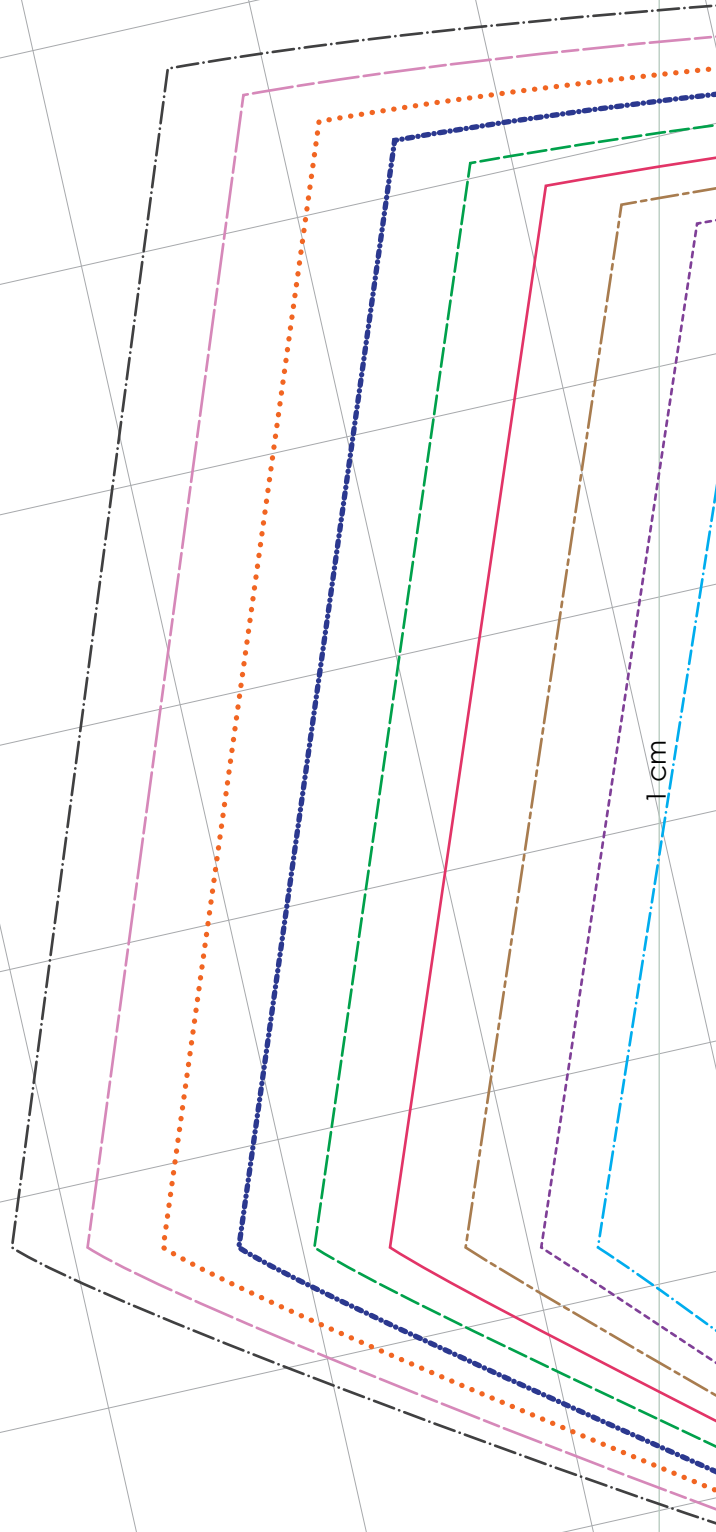


Hanne Hipster Trusser  
Kile  
Klip x 2 mod fold  
(Den ene i bomuldsjersey)

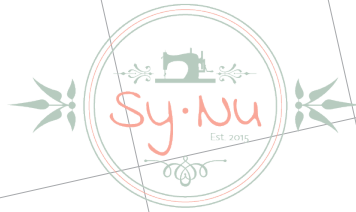
Bagtil  
1 cm



4



5



Hanne Hipster Trusser  
Bagstykke  
Klip x 1 mod fold

Midt bag

Trådretning

Fold

1 cm

1 cm

1 cm