










Sømrum er ikke inkluderet i mønstret, men skrevet som cm, der skal tilføjes før du klipper stoffet.

-  *Str 34*
-  *Str 36*
-  *Str 38*
-  *Str 40*
-  *Str 42*
-  *Str 44*
-  *Str 46*
-  *Str 48*
-  *Str 50*

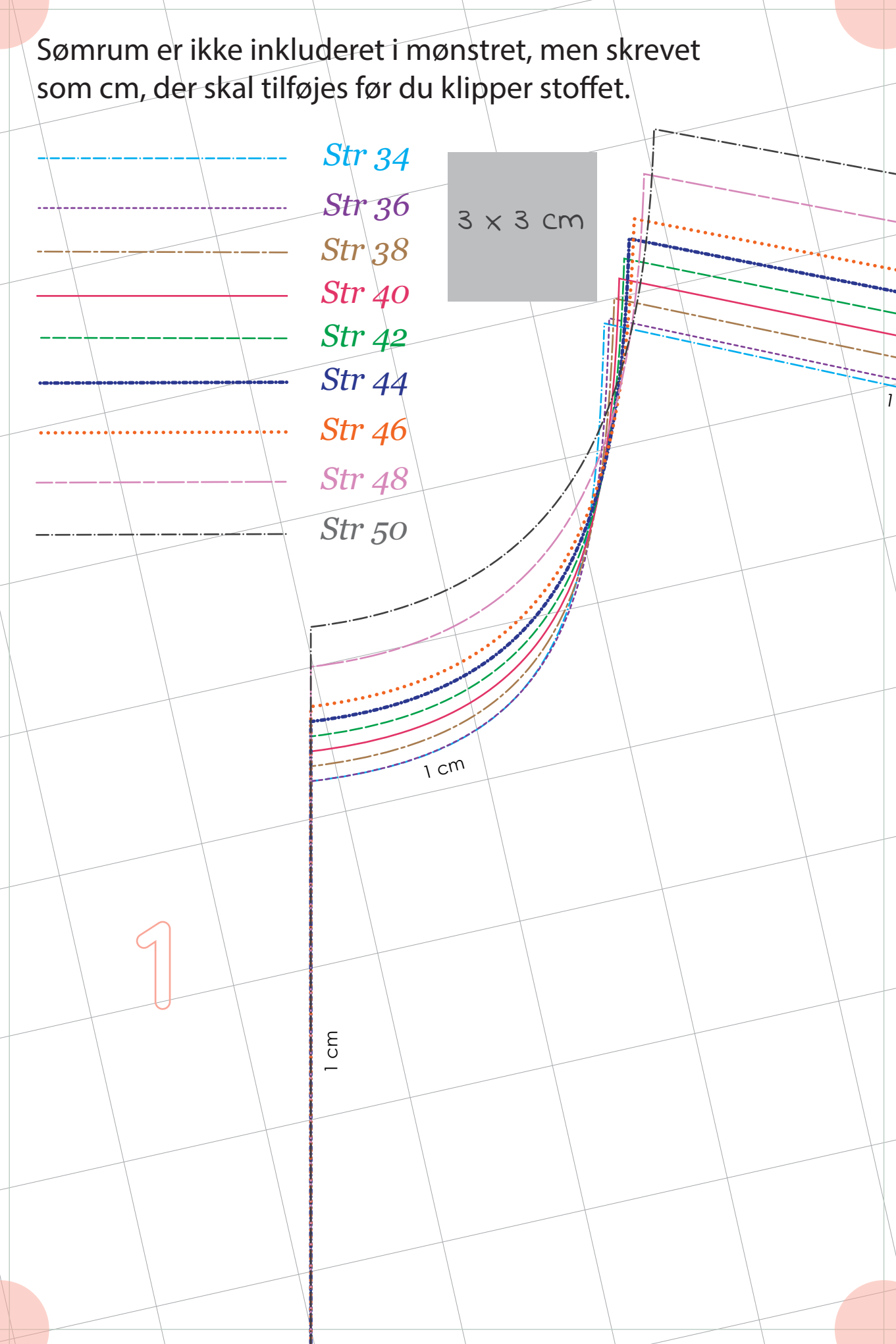
3 x 3 cm

1

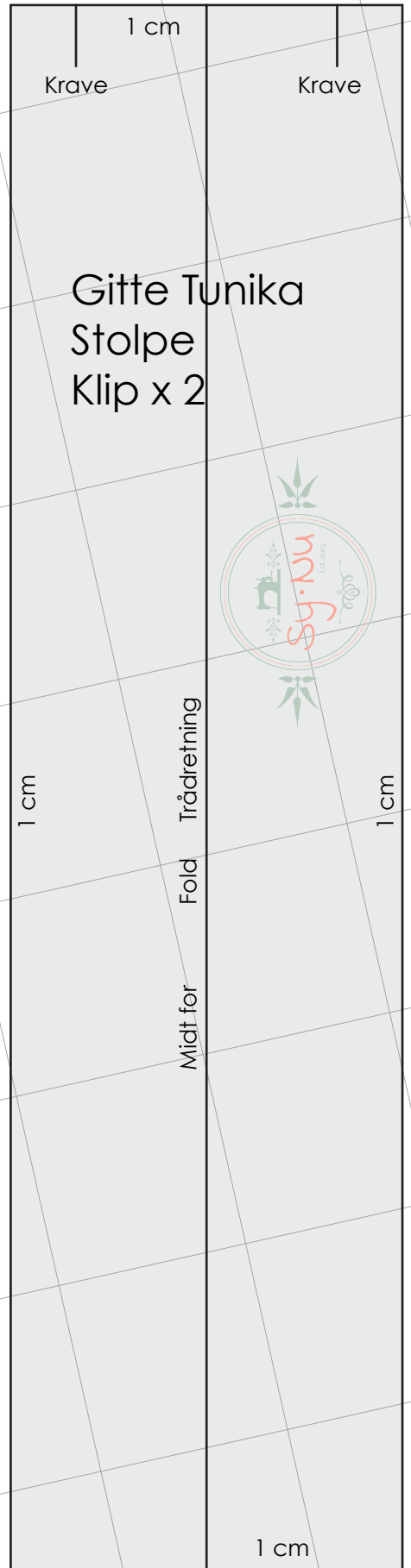
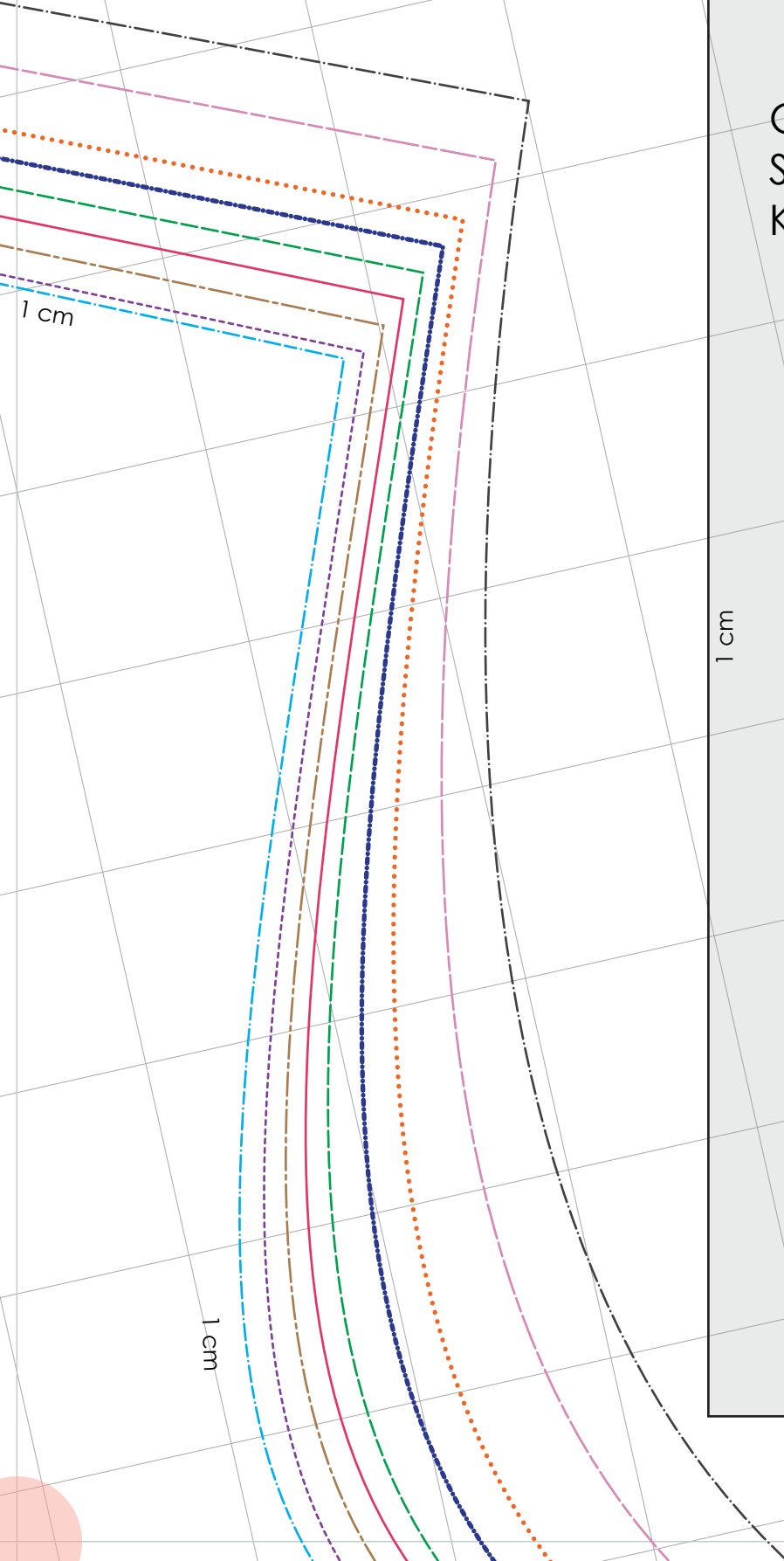
1 cm

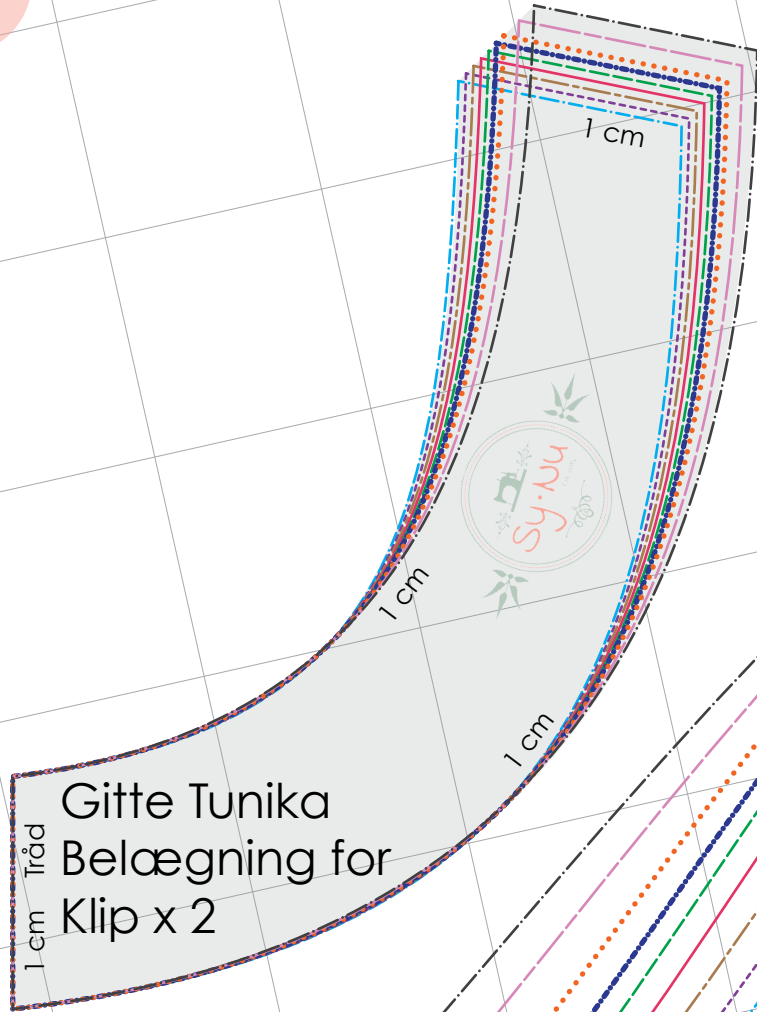
1 cm

1



2

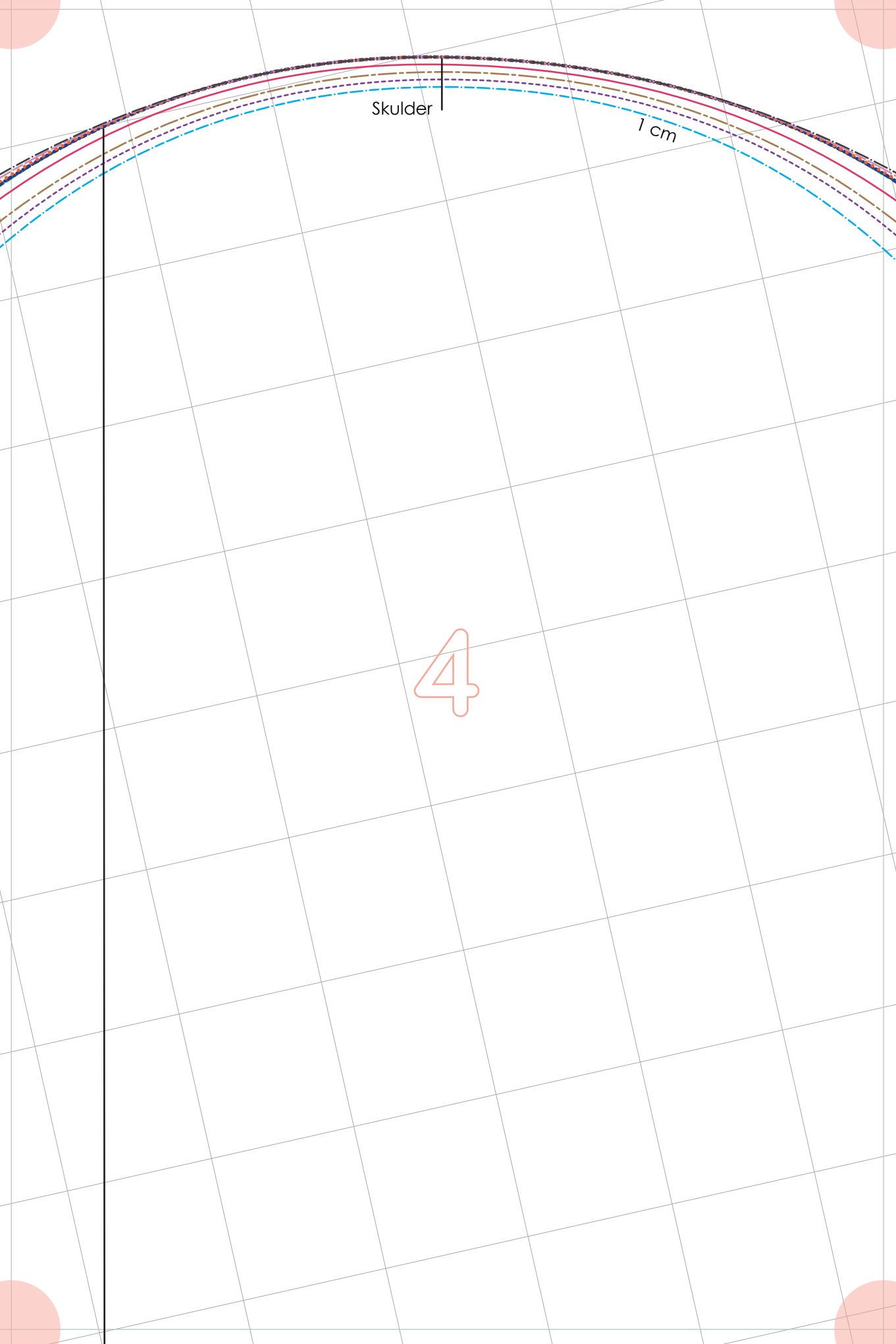




3

1 cm Tråd
Gitte Tunika
Belægning for
Klip x 2

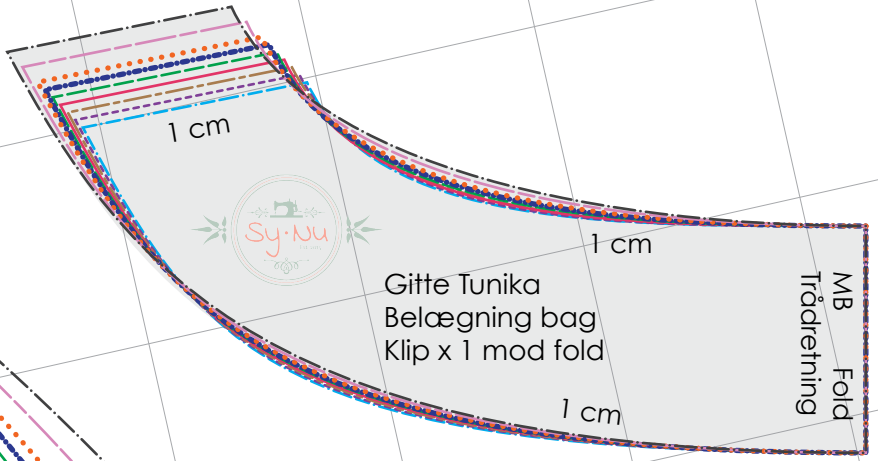
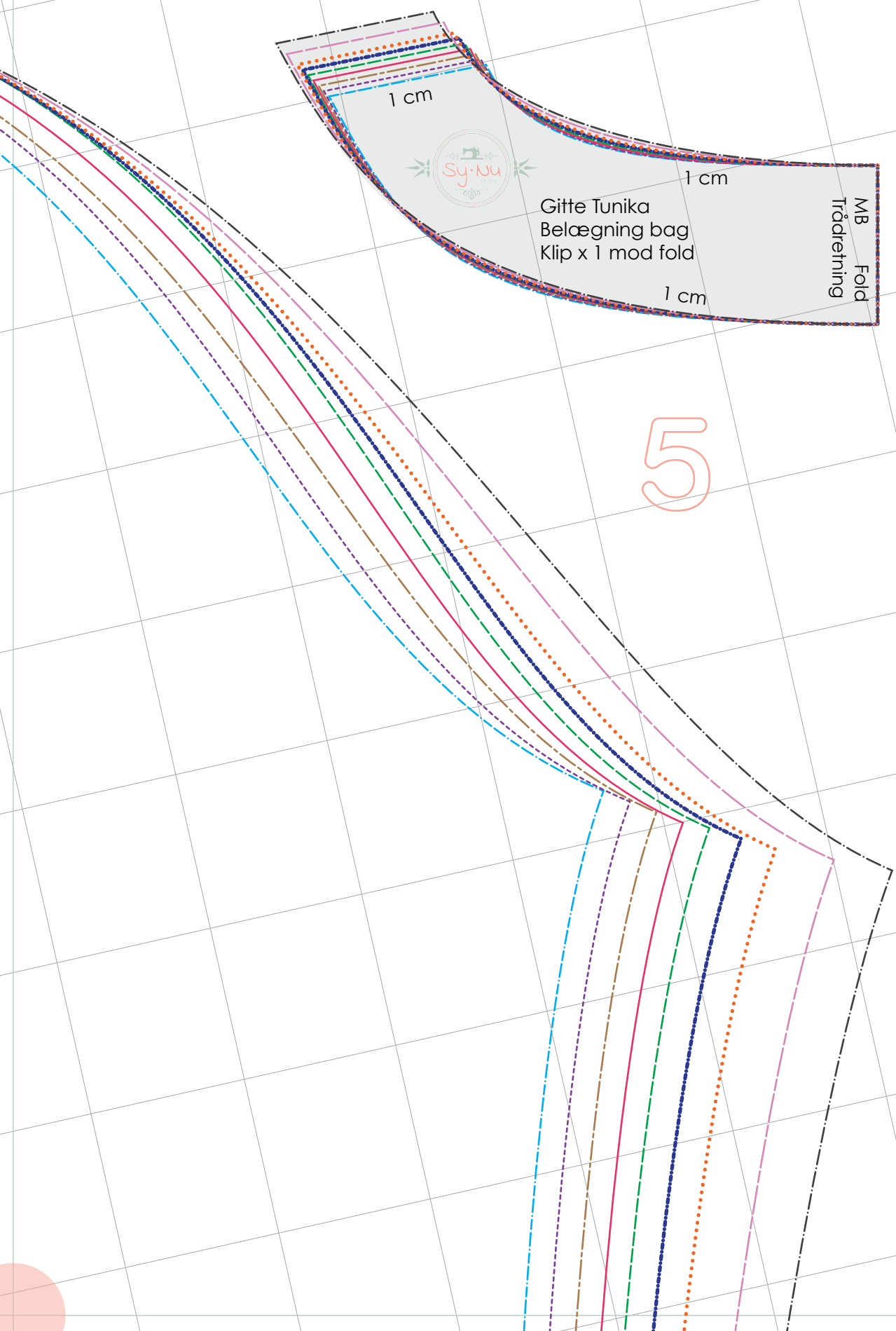
Foran



Skulder

1 cm

4



1 cm



Gitte Tunika
Belægning bag
Klip x 1 mod fold

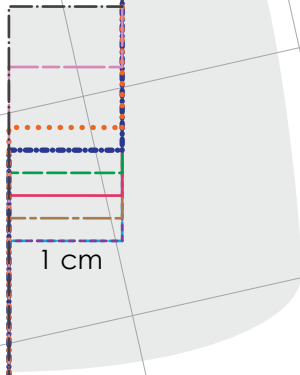
1 cm

1 cm

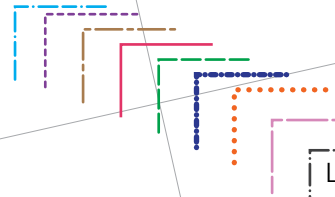
MB
Fold
Trådretning

5

6



1 cm



Lommeplacering



Gitte Tunika
Forstykke
Klip x 1 mod fold

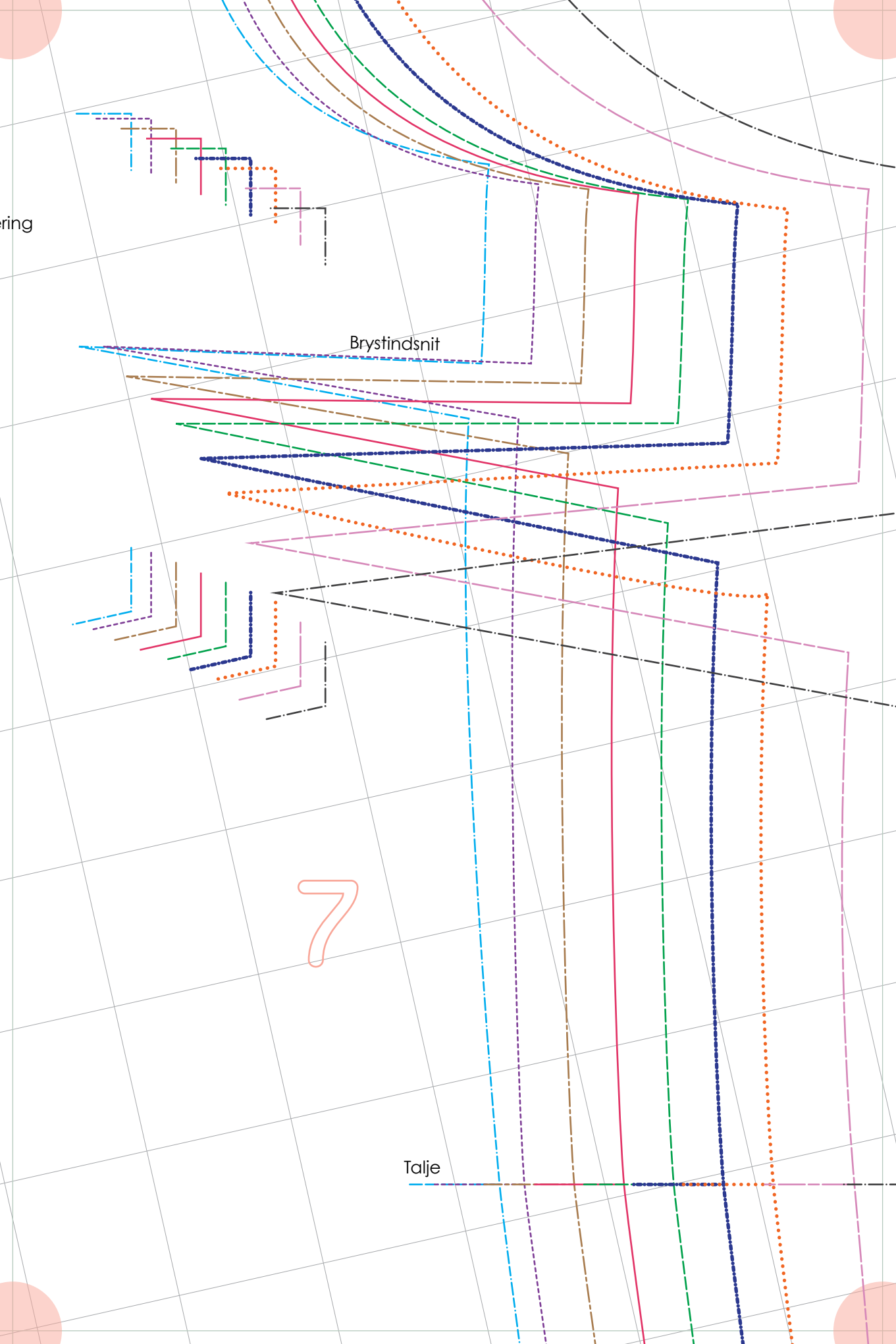
fold Trådretning

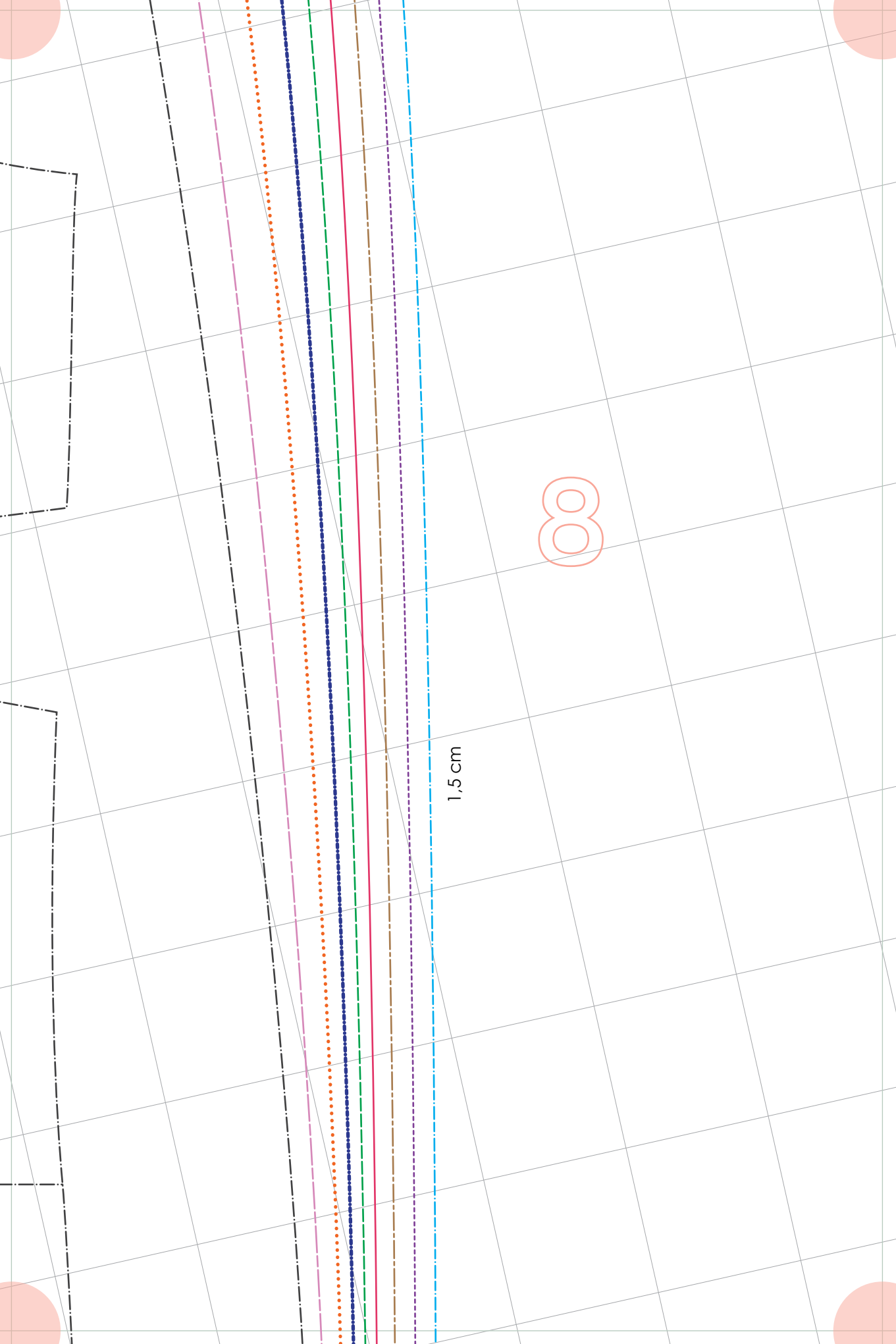
ring

Brystindsnit

7

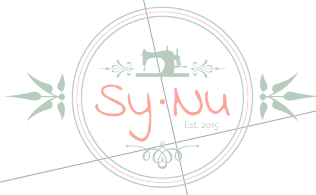
Talje





8

1,5 cm

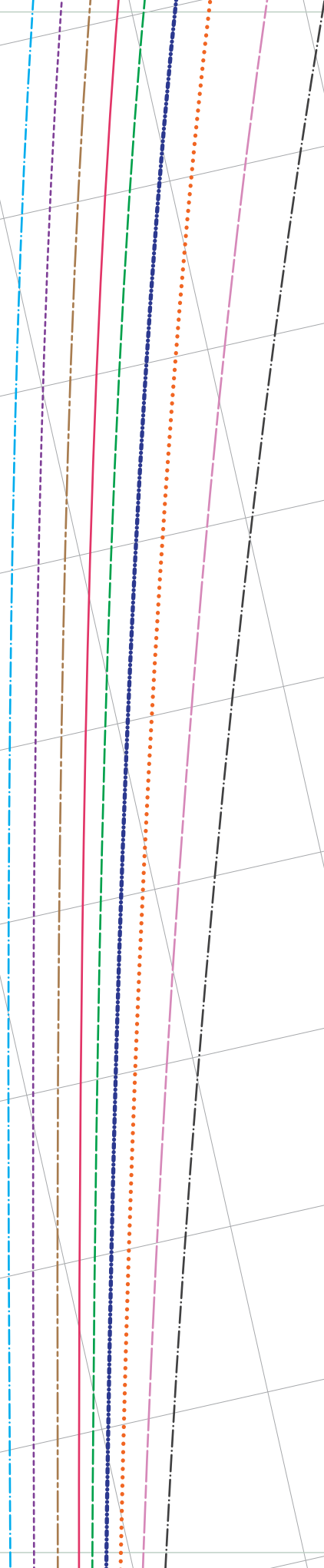


Gitte Tunika
Ærme
Klip x 2

9

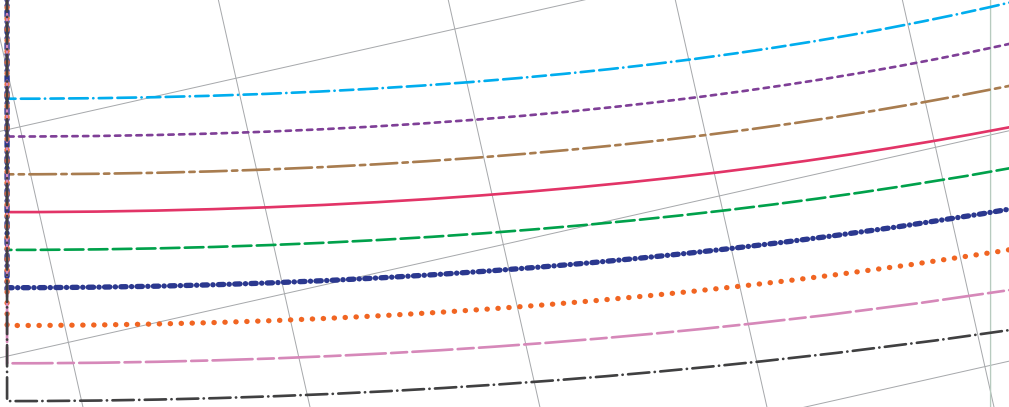
10

1,5 cm



Middt for
Fold

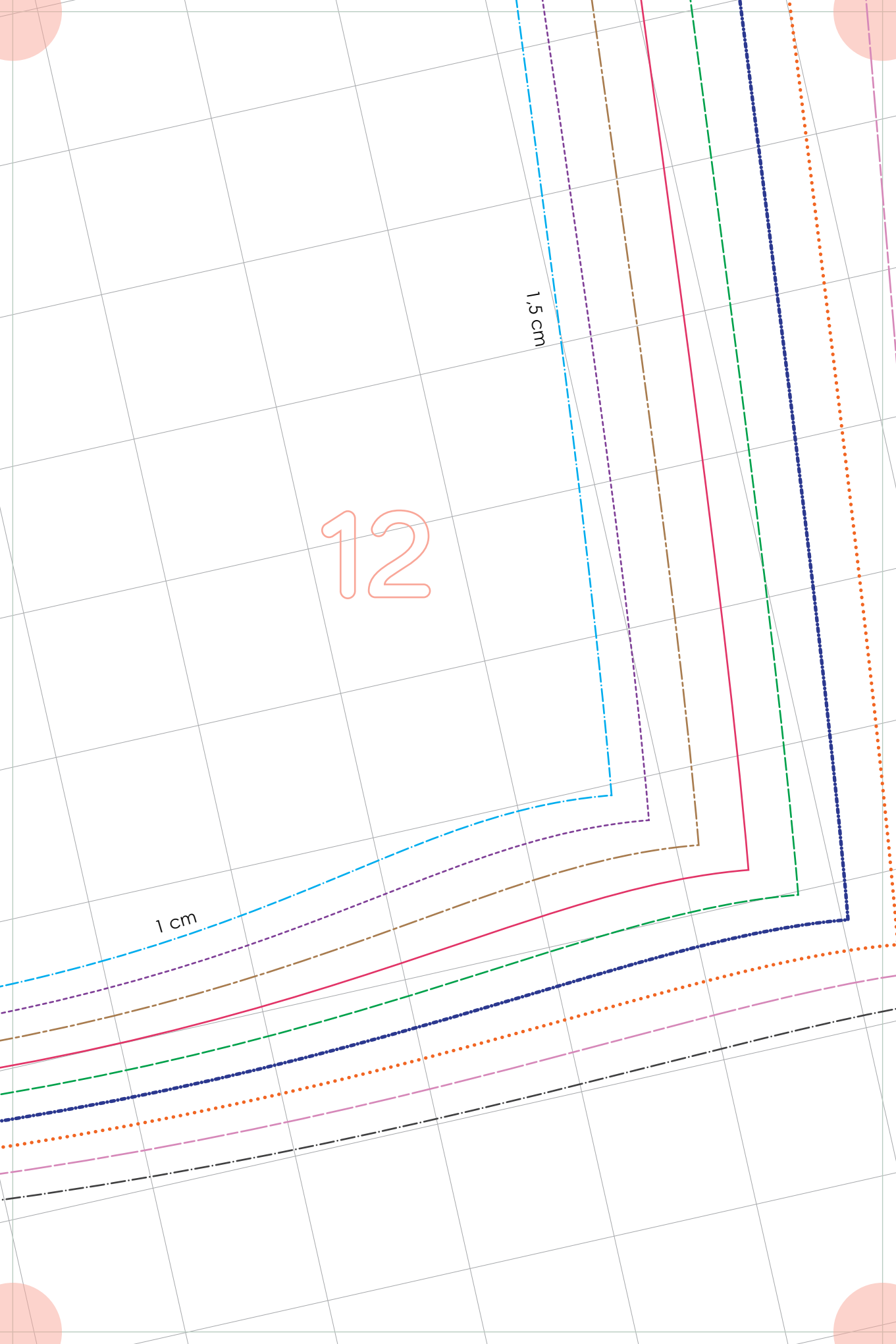
11



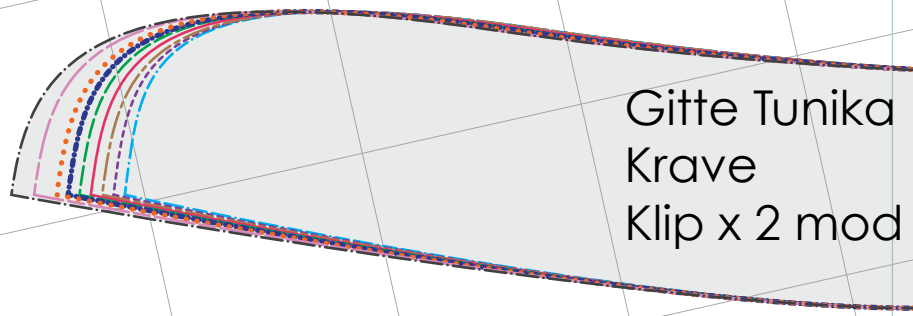
12

1,5 cm

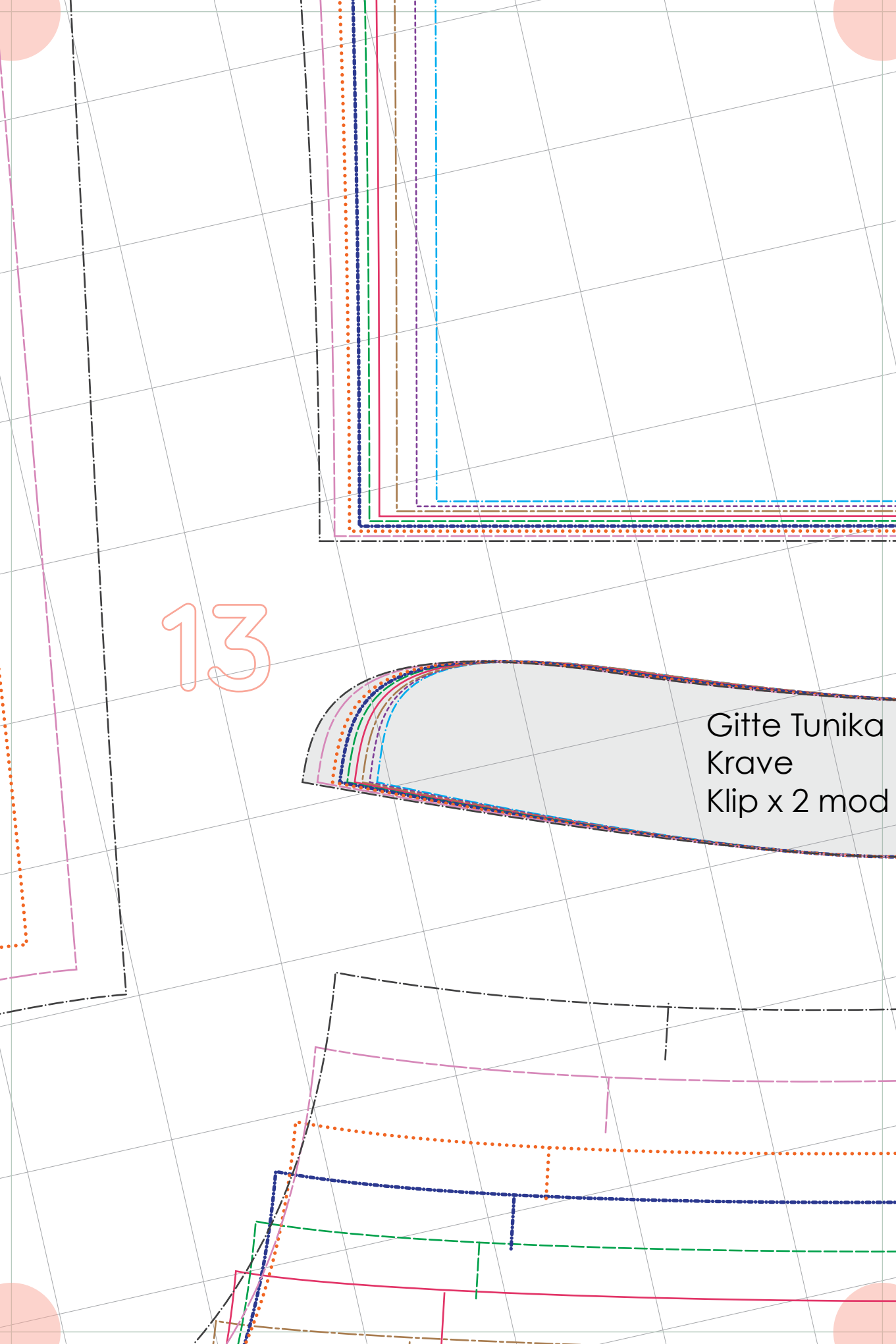
1 cm



13

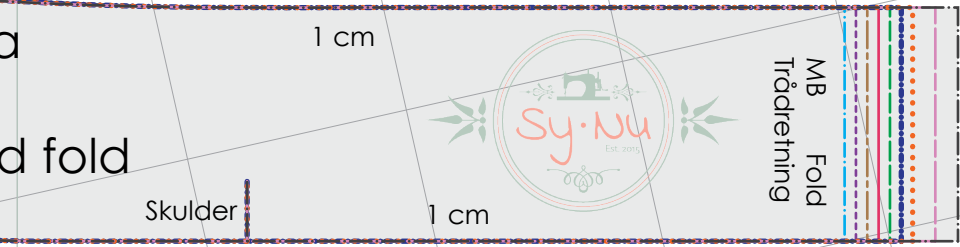


Gitte Tunika
Krave
Klip x 2 mod



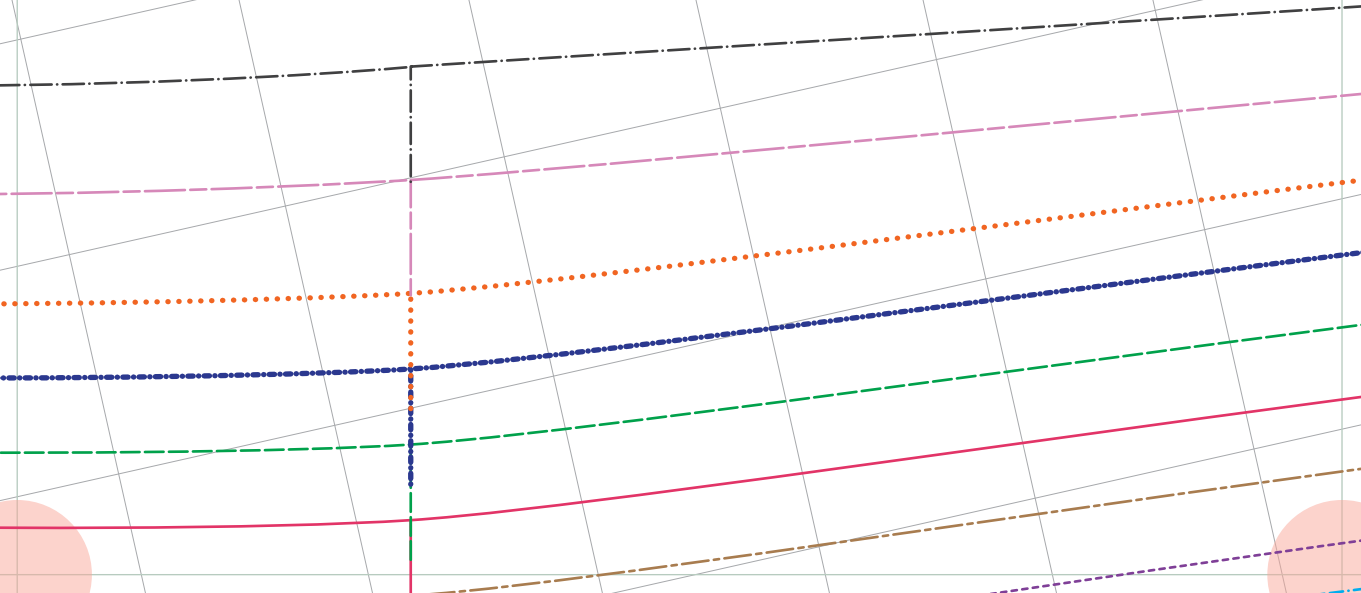


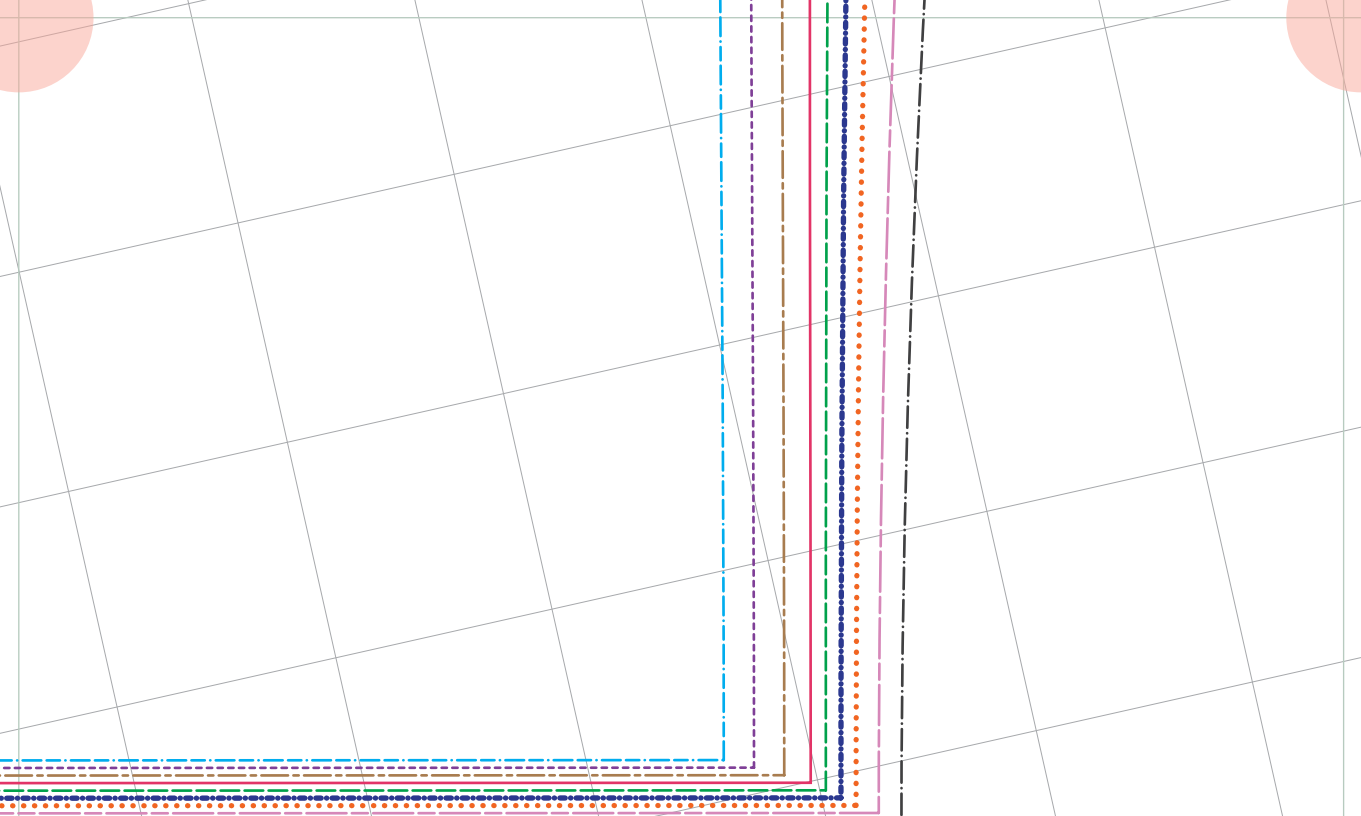
1,5 cm (løbegang)



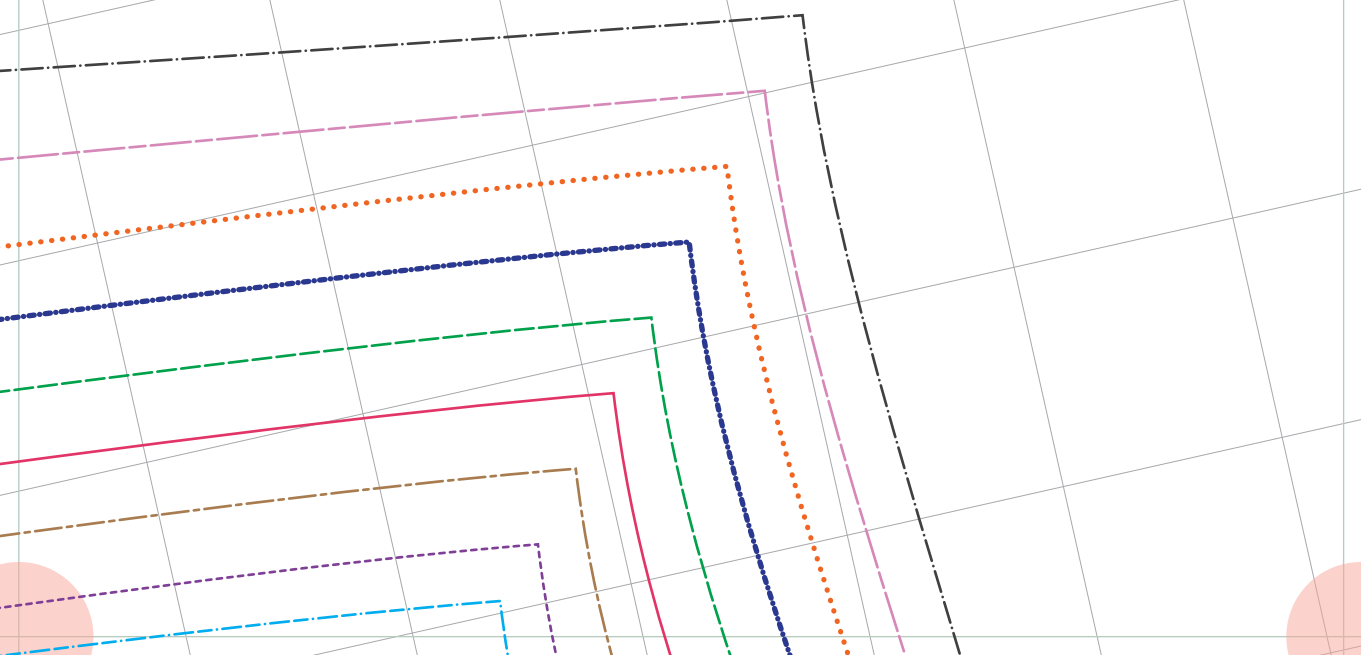
d fold

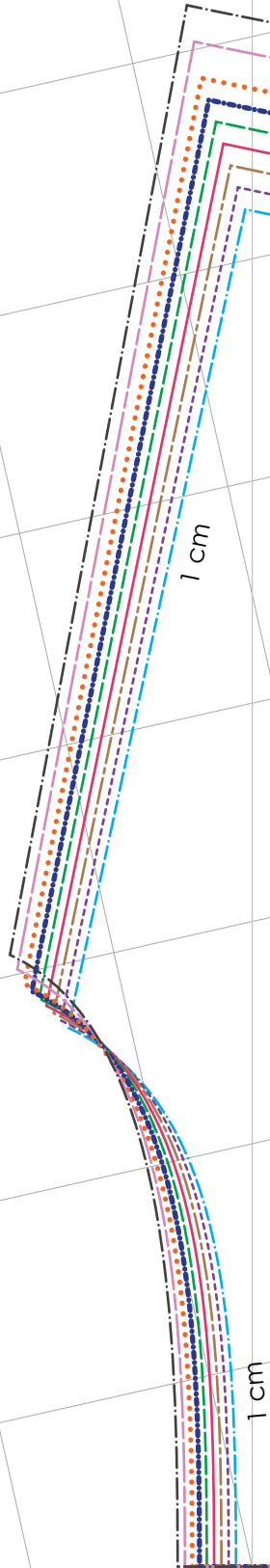
14



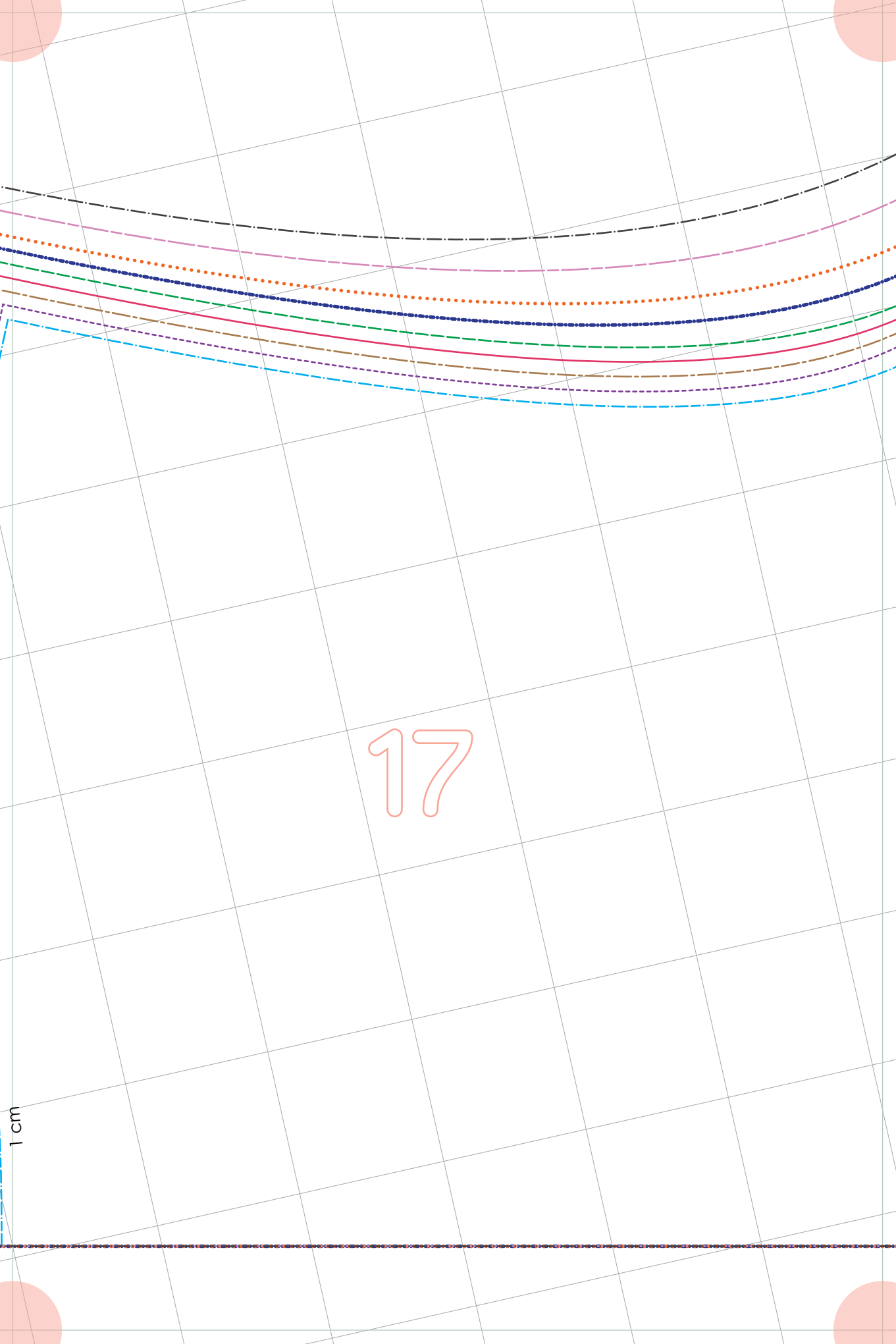


15



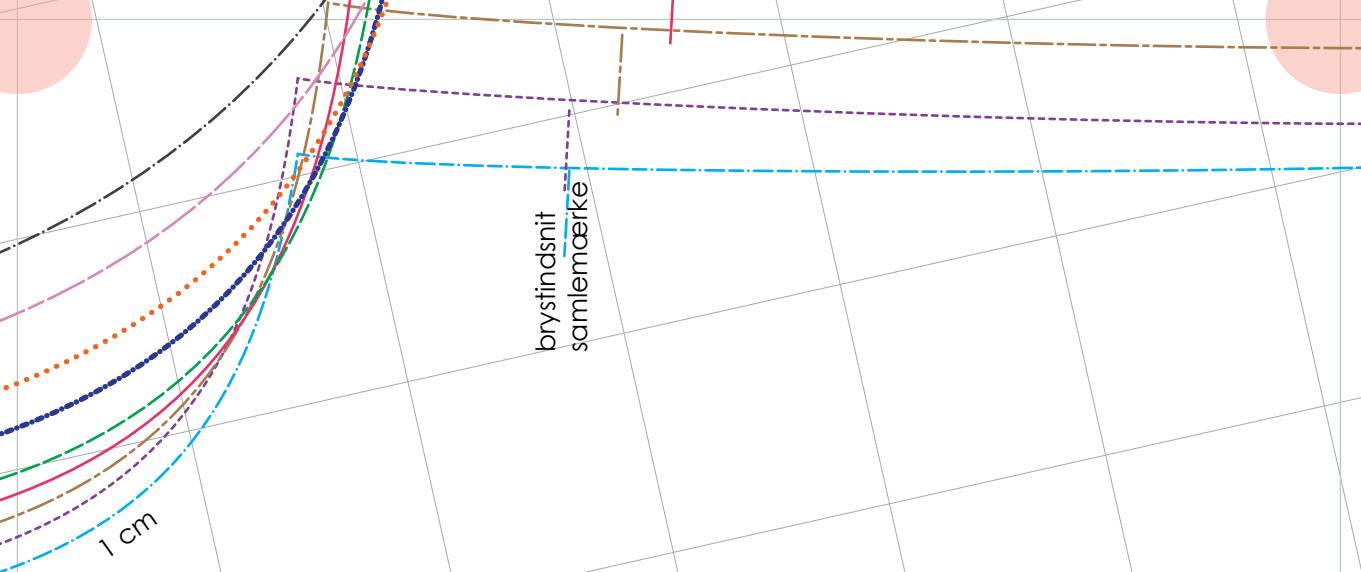


16



17

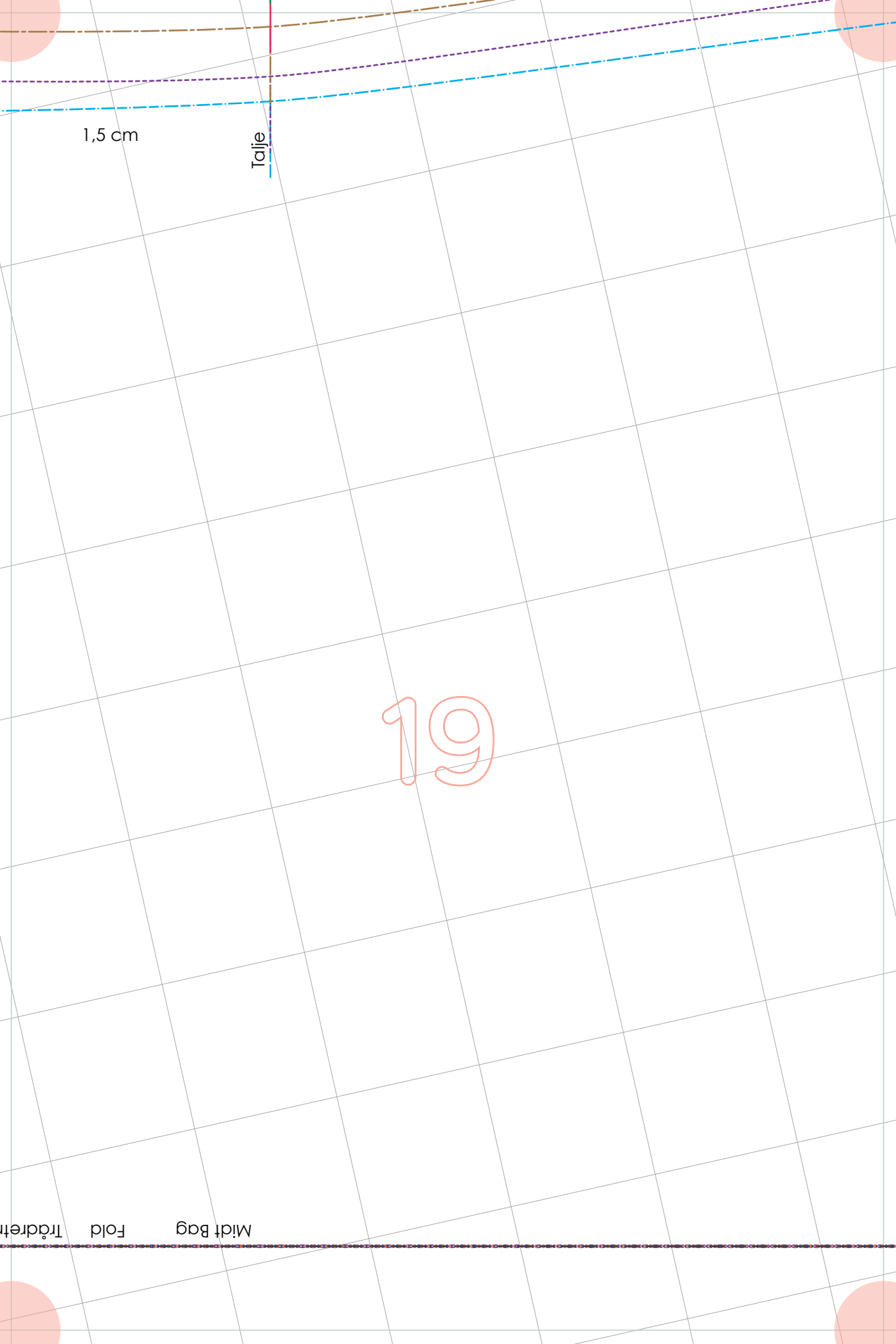
1 cm



18



Gitte Tunika
Bagstykke
Klip x 1 mod fold



1,5 cm

Talje

19

Midt Bag
Fold
Trådretning

2+

1 cm

