










Sømrum er ikke inkluderet i mønstret, men skrevet som cm, der skal tilføjes før du klipper stoffet.

-  Str 34
-  Str 36
-  Str 38
-  Str 40
-  Str 42
-  Str 44
-  Str 46
-  Str 48
-  Str 50

3 x 3 cm

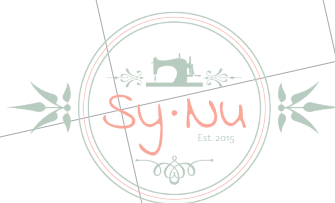
1

1 cm

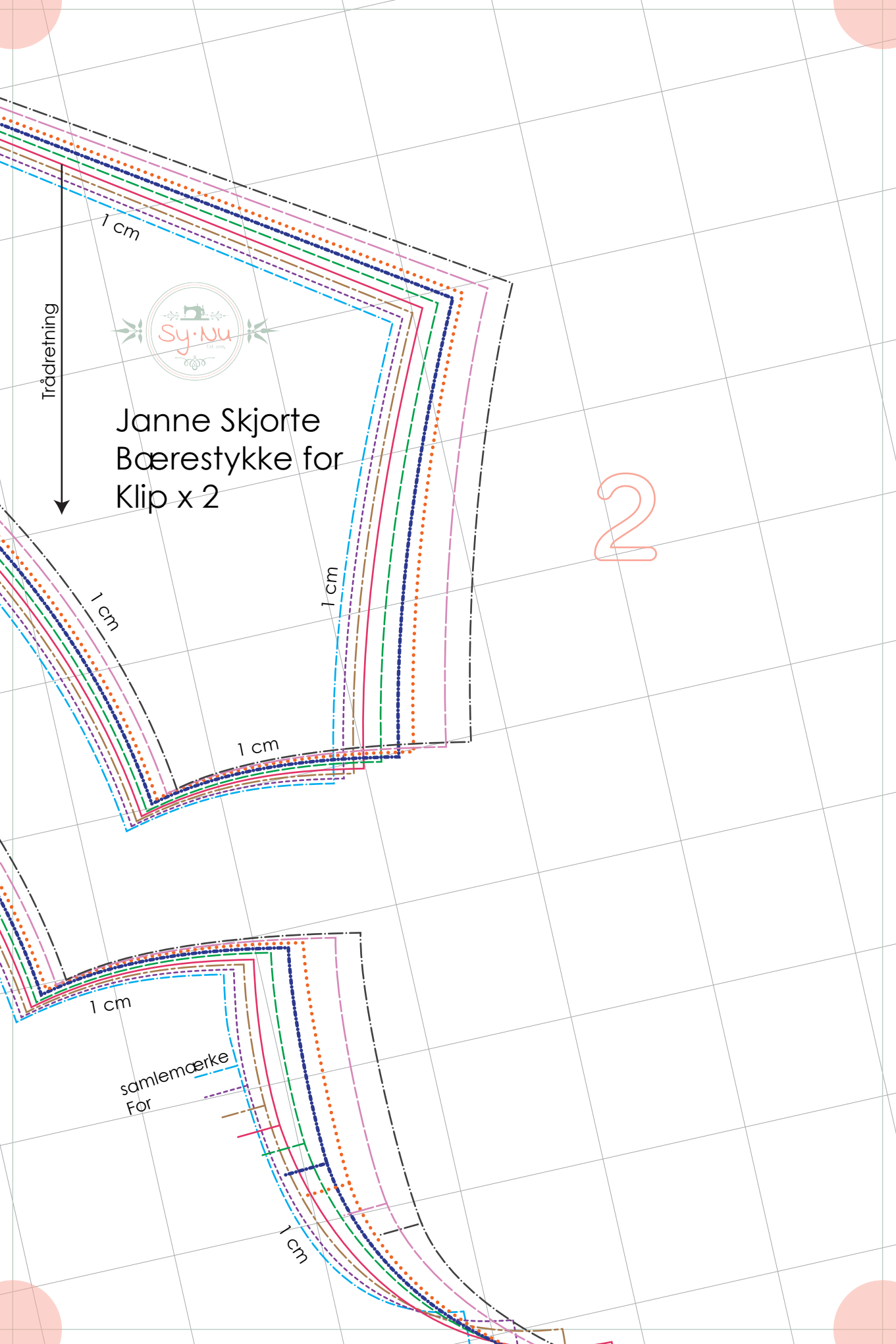
1 cm

1 cm

Knap(hul)



Janne Skjorte
Forstykke
Klip x 2



Janne Skjorte
Bærestykke for
Klip x 2

Trådretning

2

1 cm

1 cm

1 cm

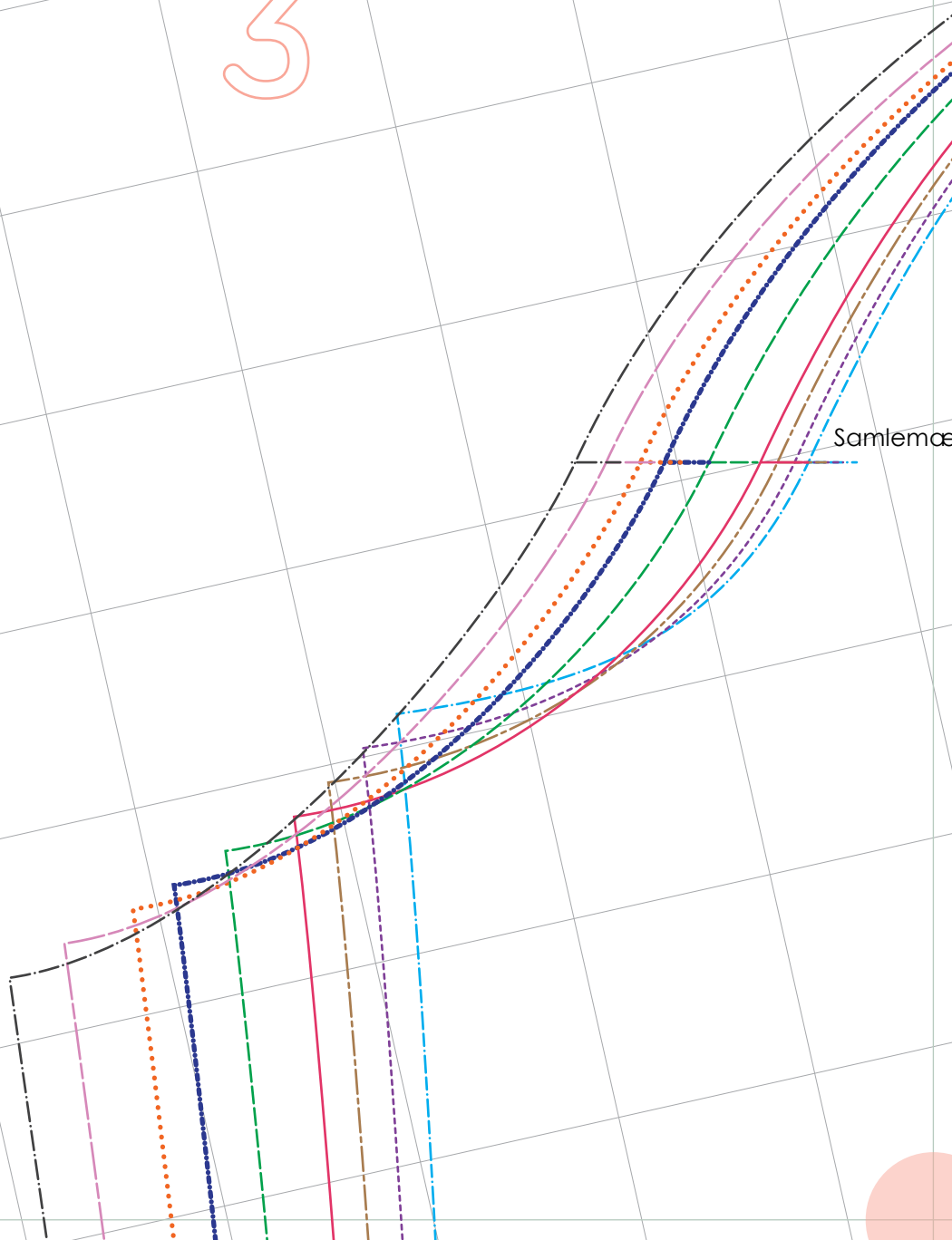
1 cm

1 cm

1 cm

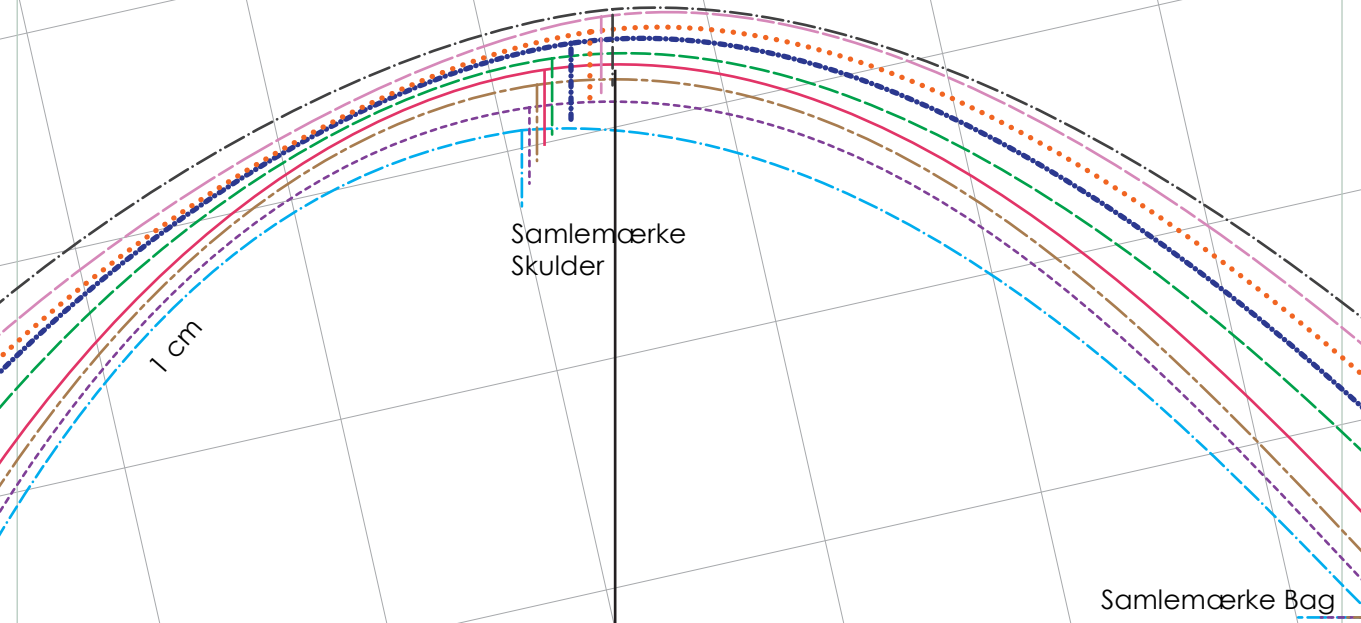
samlemærke
For

3



Samlemed

4



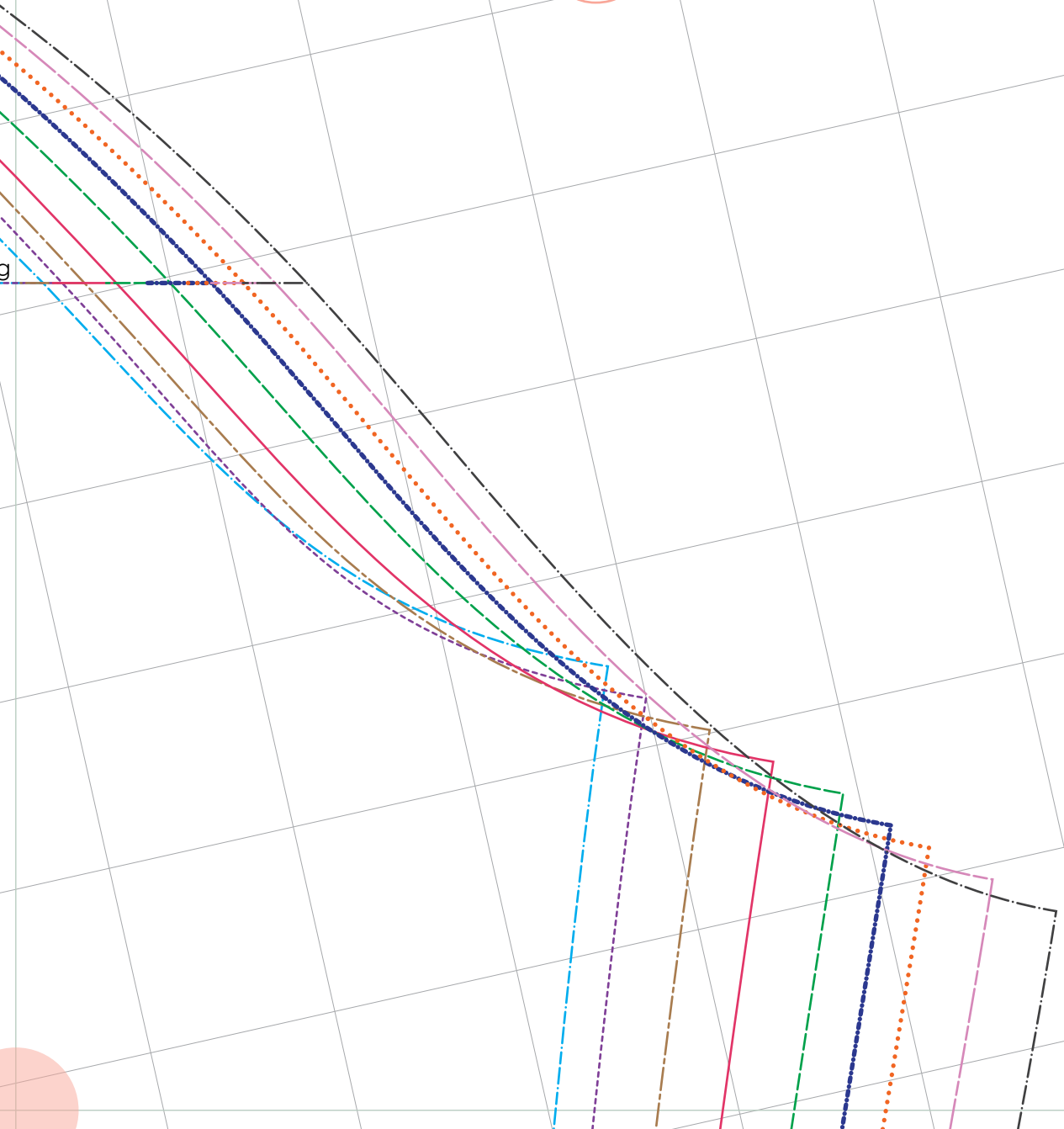
Samlemærke
Skulder

1 cm

Samlemærke Bag

mærke For

5



1 cm

Midt For

Fold

Trådretning

Midt For

Midt For

Midt For

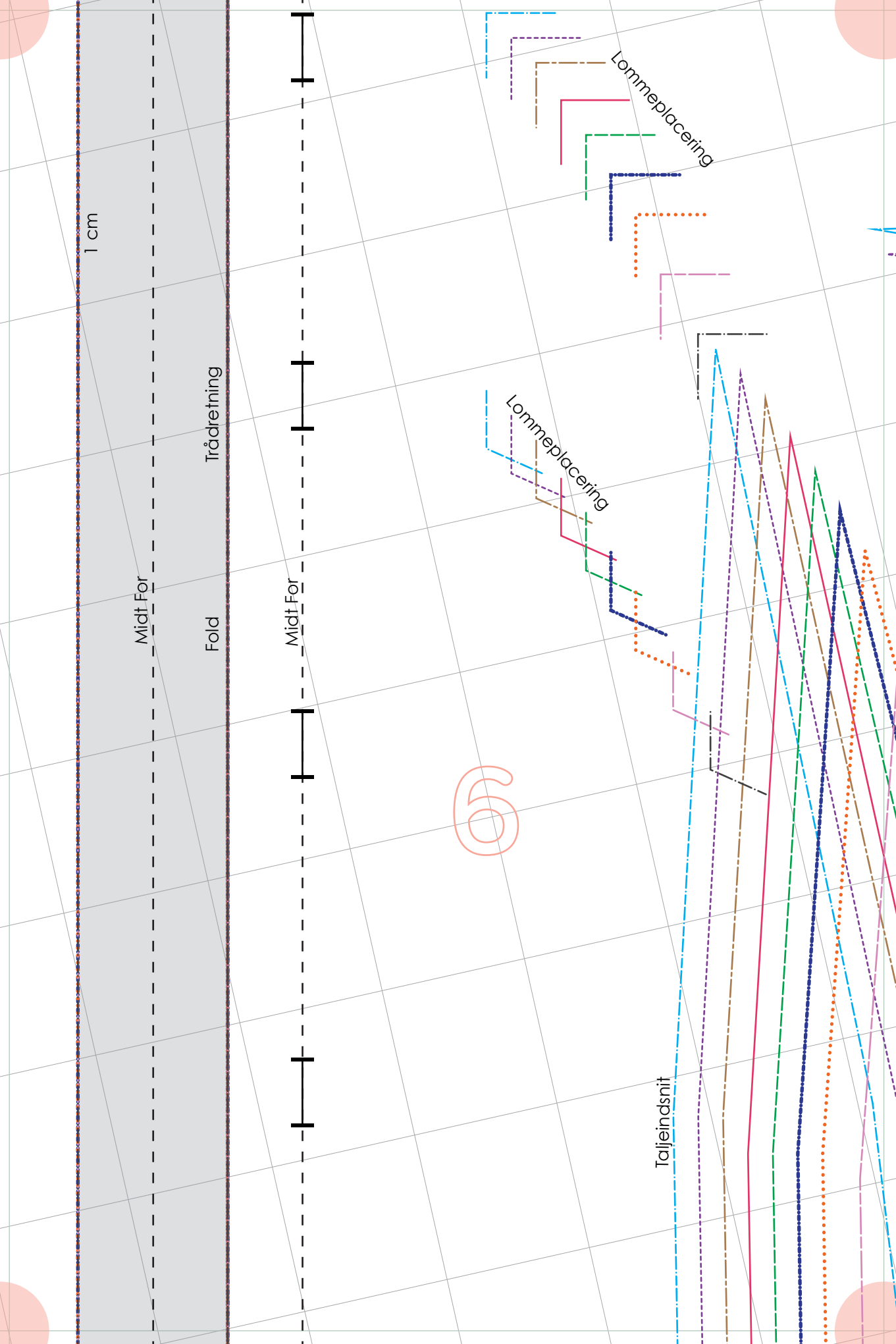
Midt For

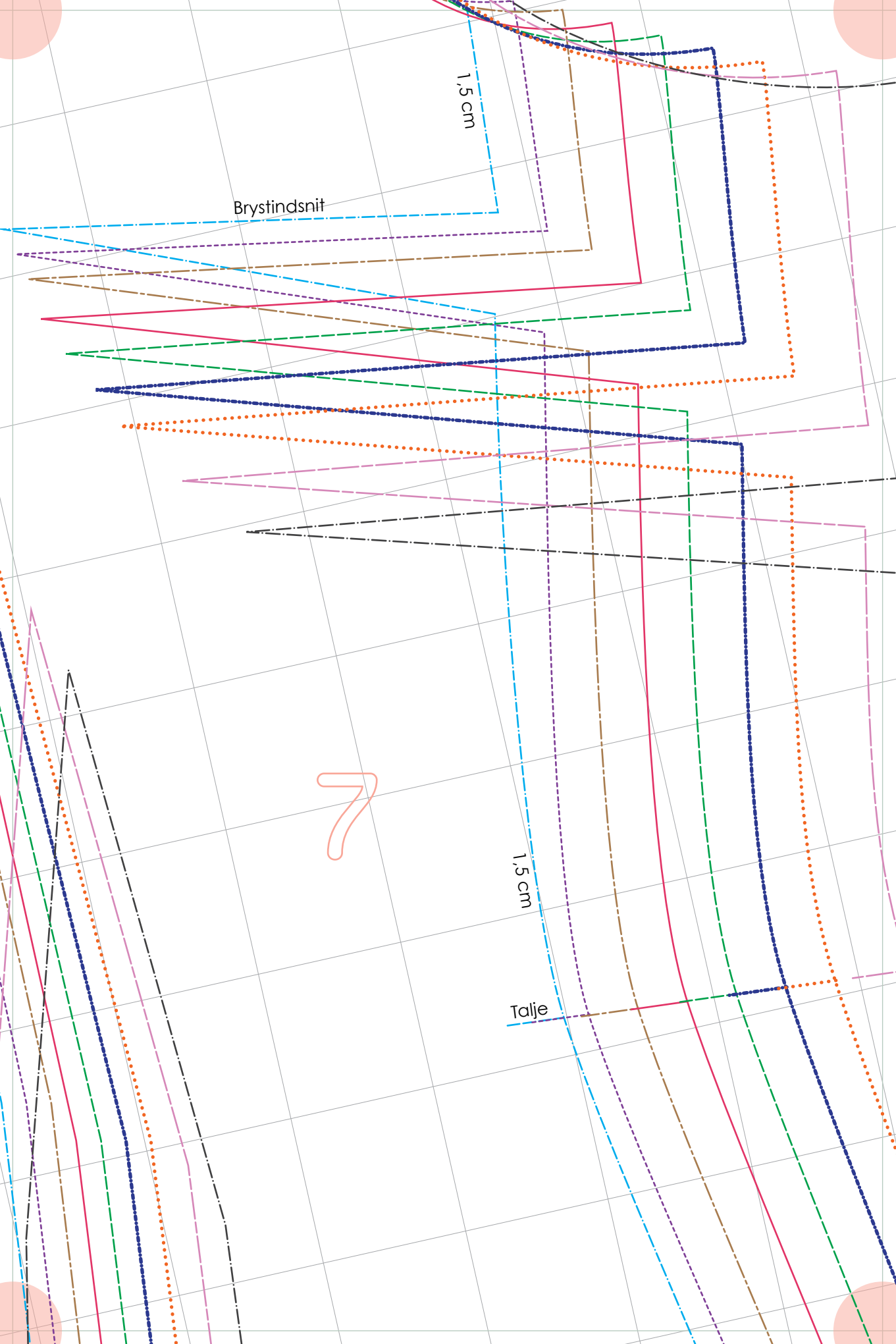
6

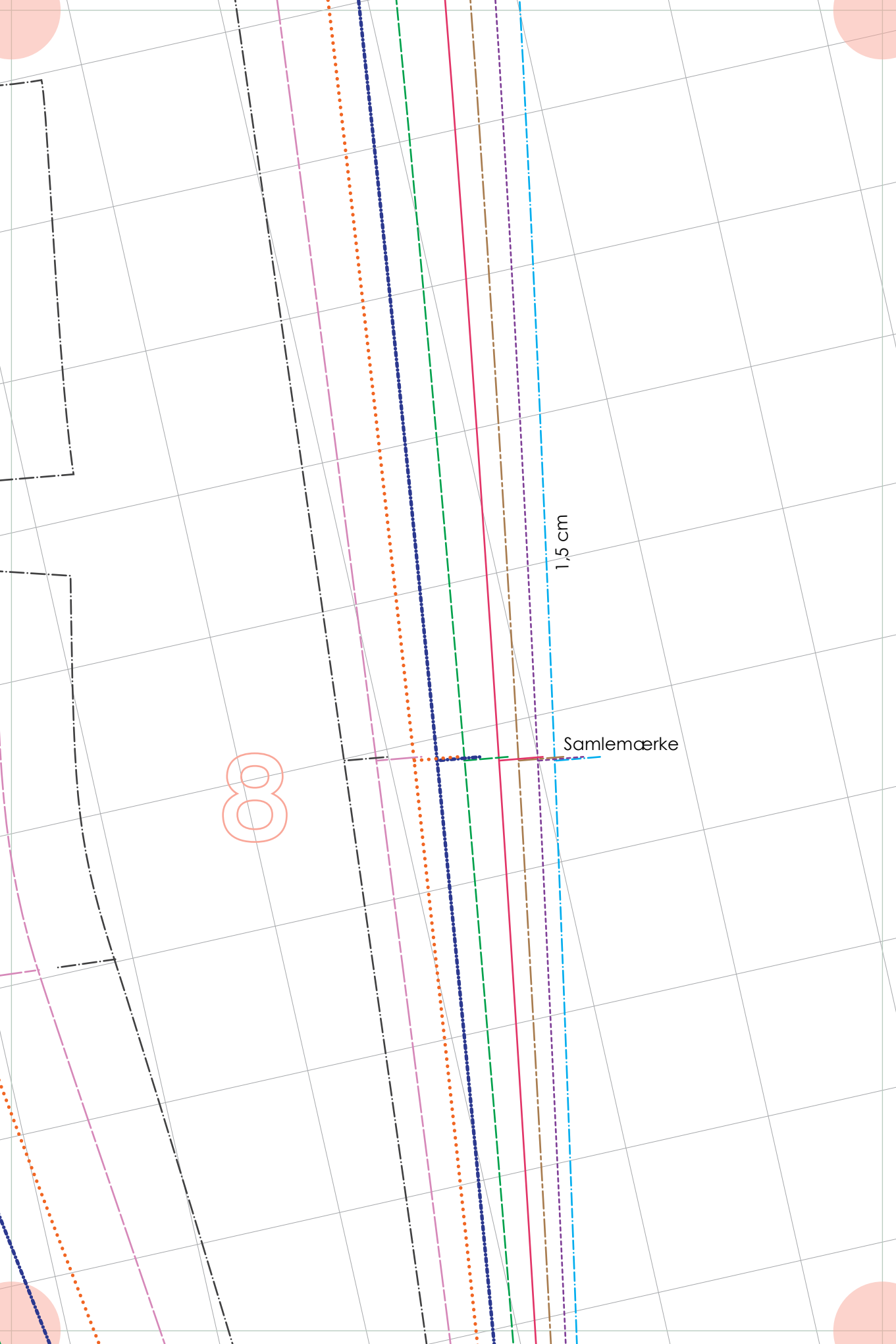
Lommeplacering

Lommeplacering

Taljeindsnit





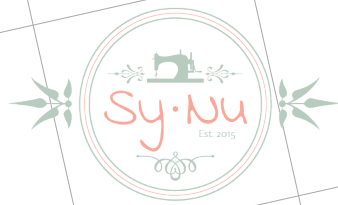


1,5 cm

Samlemærke

8

Trådretning



Janne Skjorte
Ærme
Klip x 2

9

1,5 cm

Samlemærke

10

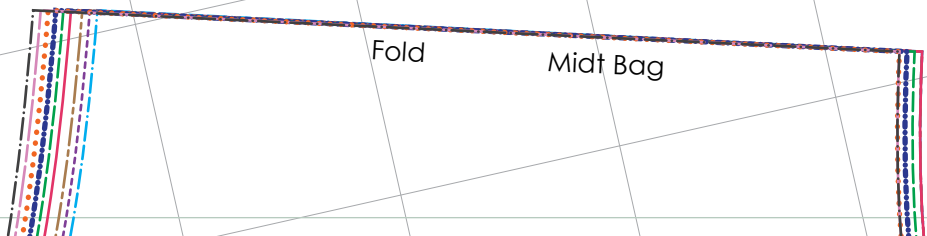
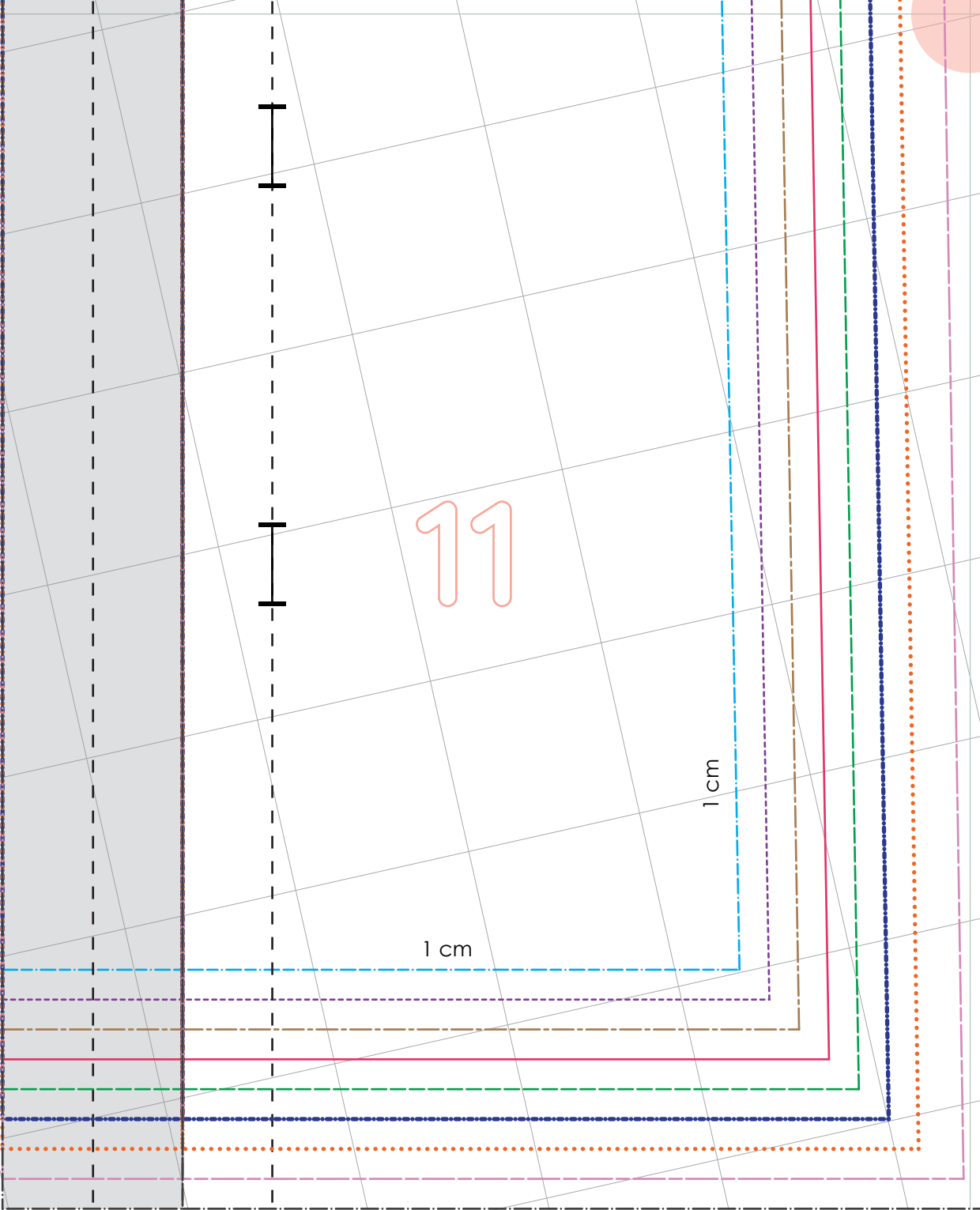
11

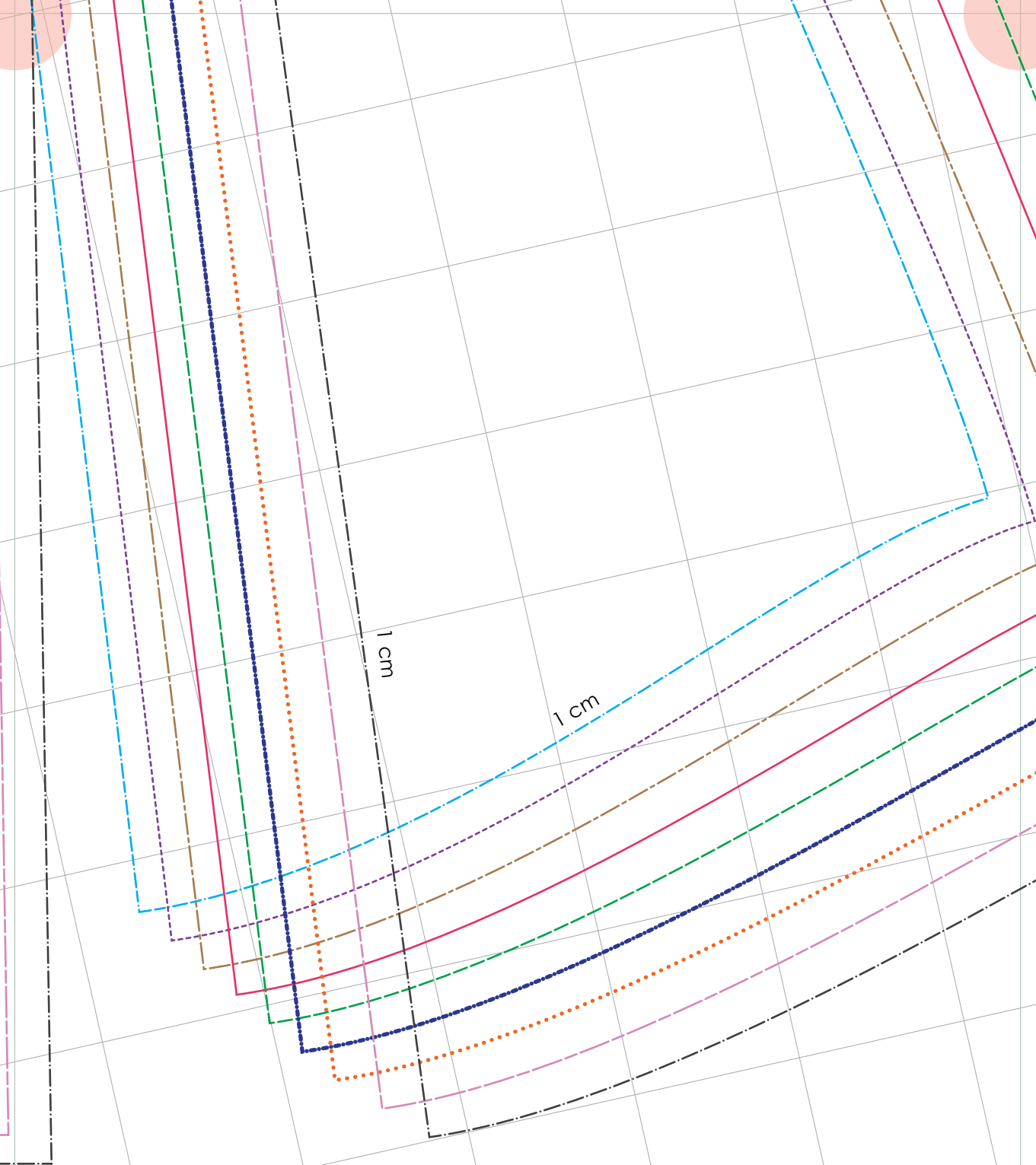
1 cm

1 cm

Fold

Mid Bag



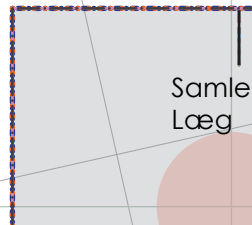
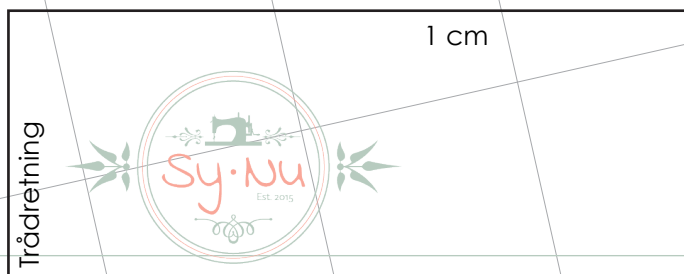
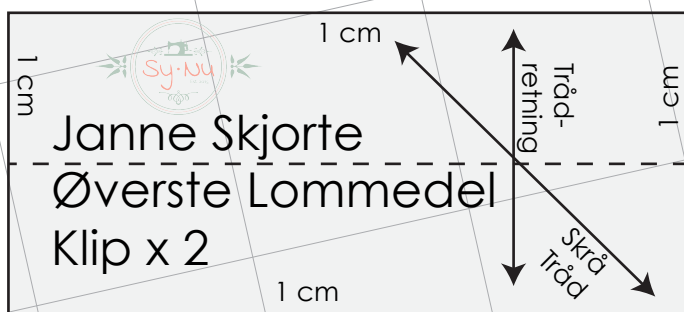


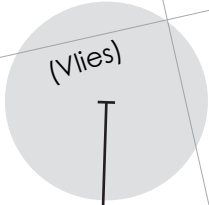
12

13

1 cm

Hvis du ønsker at den øverste lomme del skal være skrå, er det en god idé at stryge vlieseline på, da det giver sig, når det er på skrå.

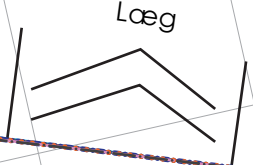




Slids



Læg



Læg



Læg

14

1 cm

Samlemærke

Samlemærke
Læg

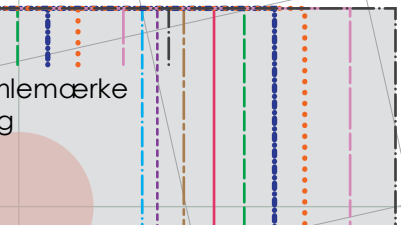
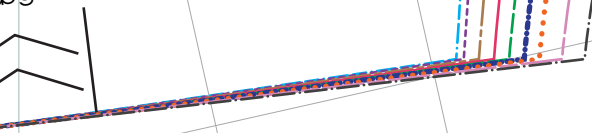
Samlemærke
Læg



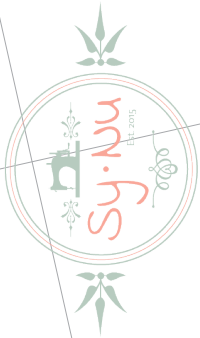
15

Janne Skjorte - Slids bår
Trådretning

eg

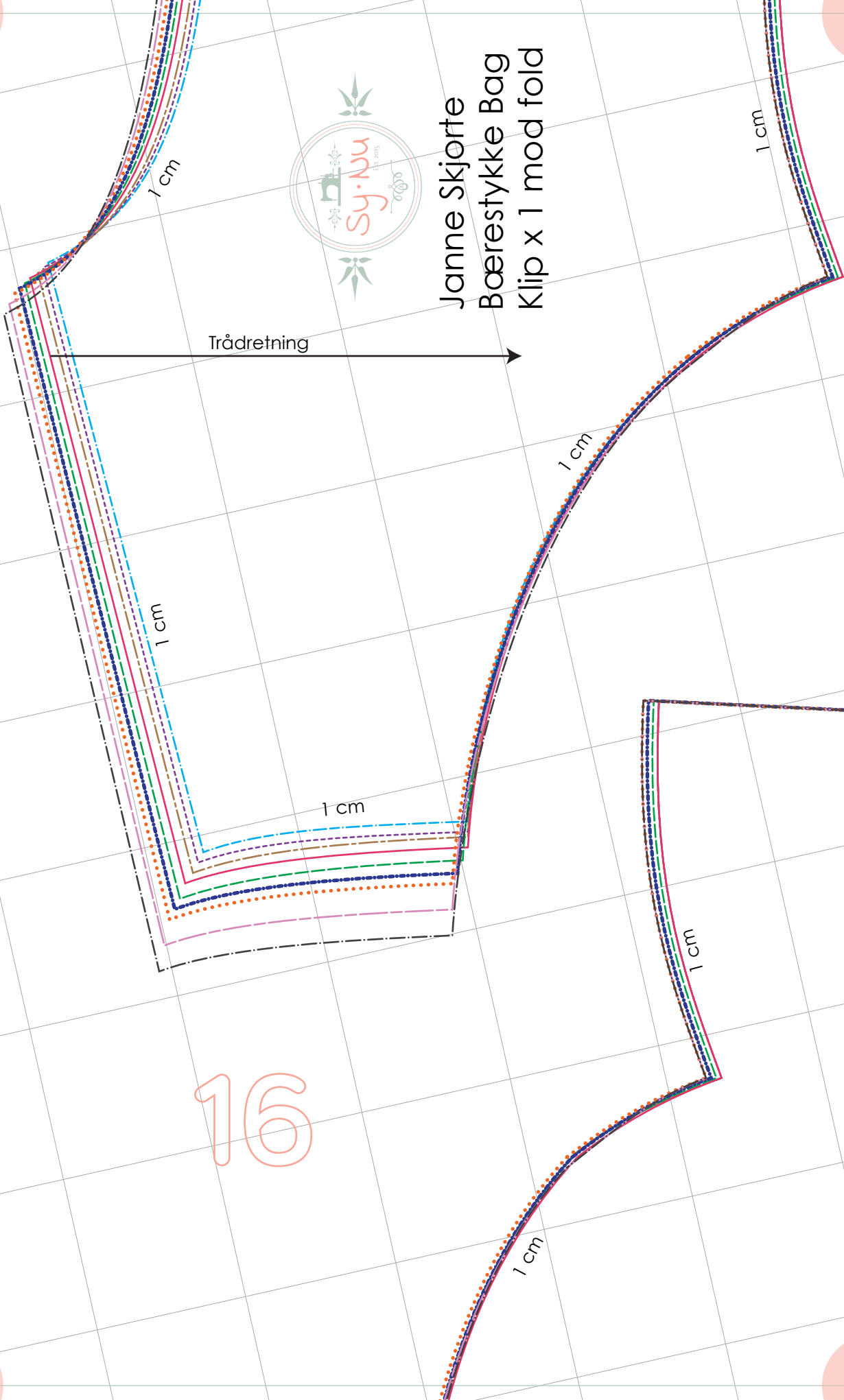


Hjemmærke
Trådretning



Janne Skjorte
Bærestykke Bag
Klip x 1 mod fold

Trådretning



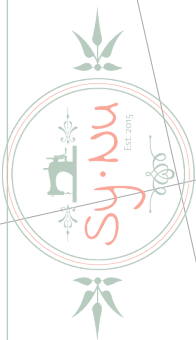
16

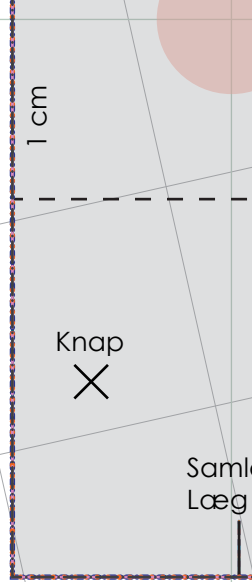
17

Midt Bag

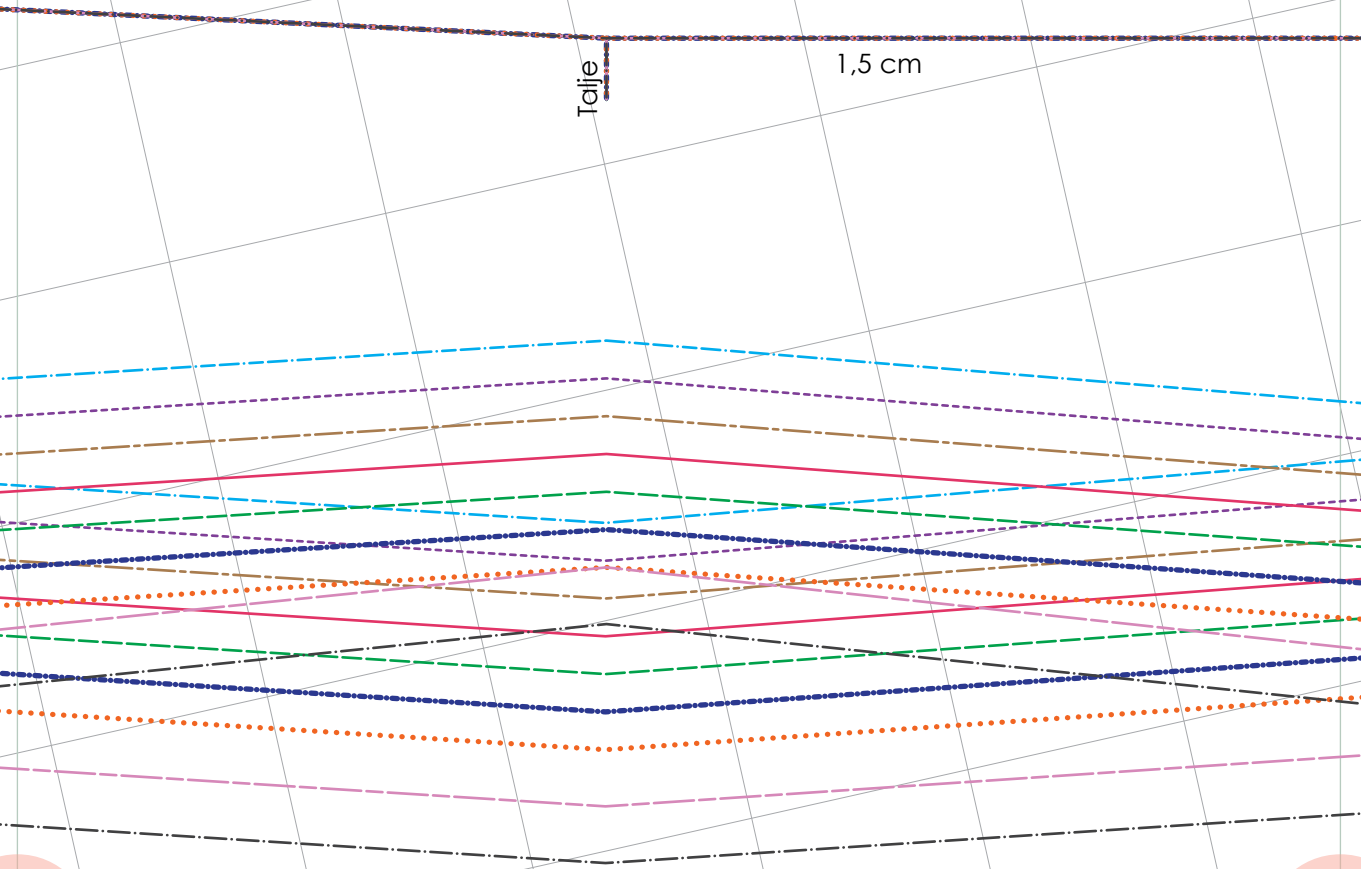
Indsnit

Janne Skjorte
Bagstykke
Klip x 2





18



Janne Skjorte
Manchet
Klip x 2

Fold

Samlemærke
Læg

Samlemærke
Læg

1 cm

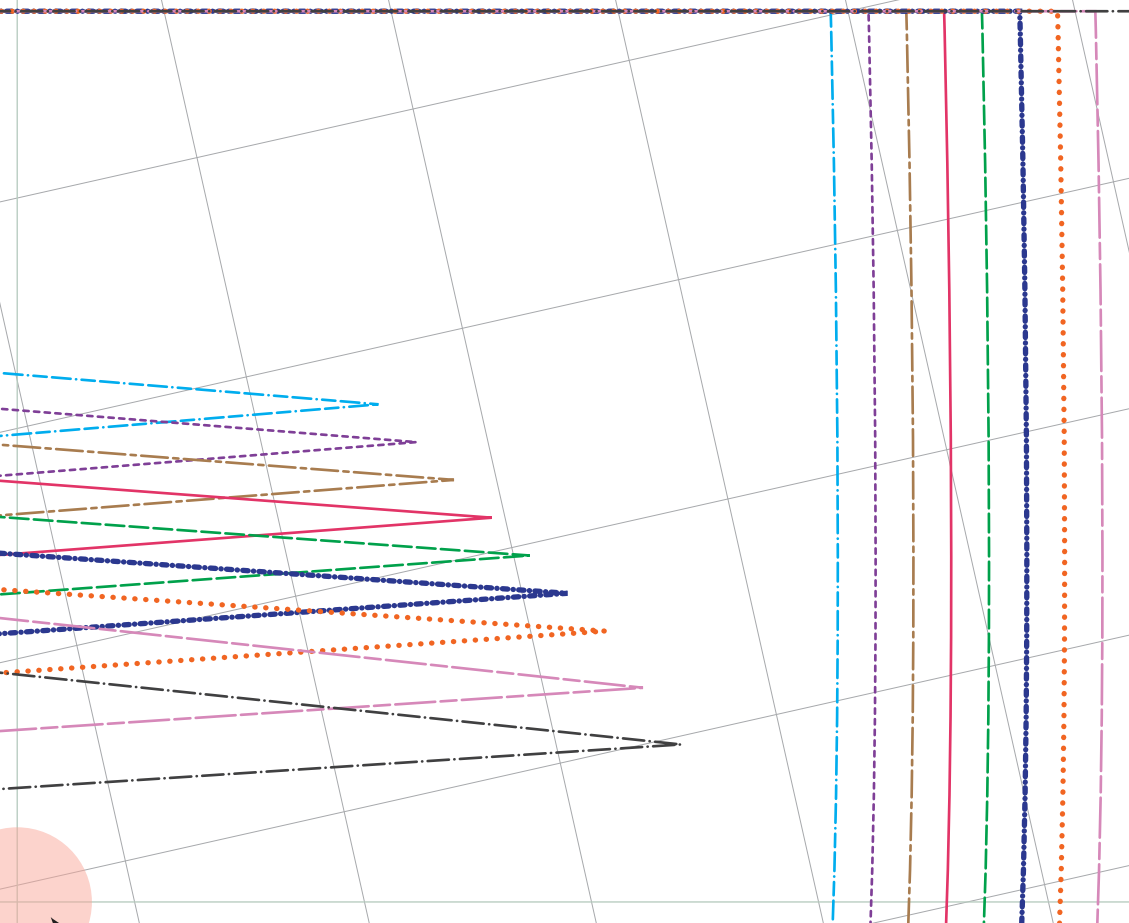
Knaph

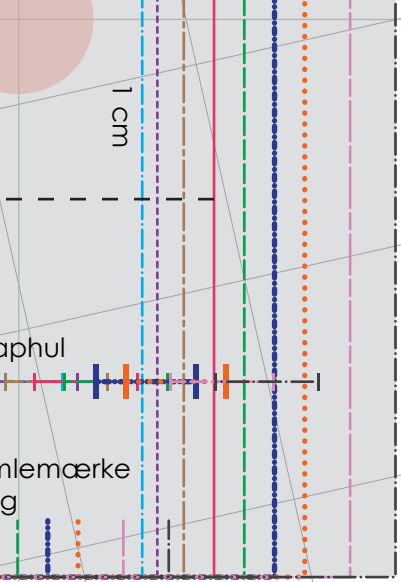


Samle
Læg



19

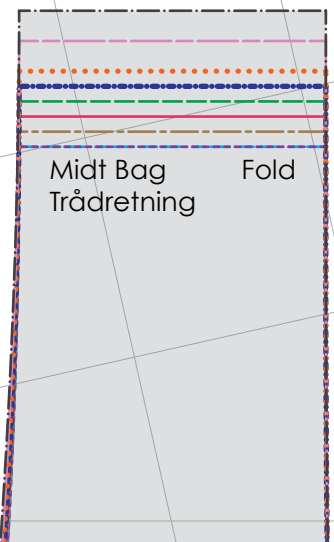




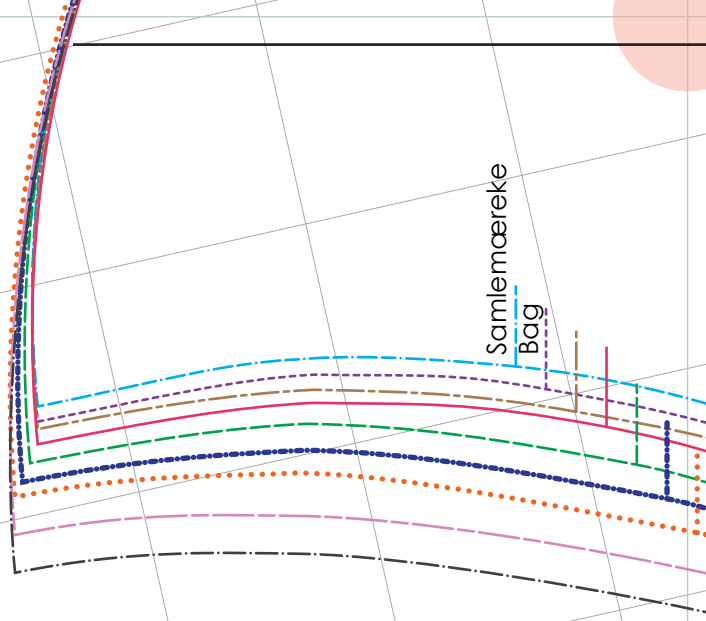
ånd - Klip x 2

OBS: Sømrum inkluderet

20



21

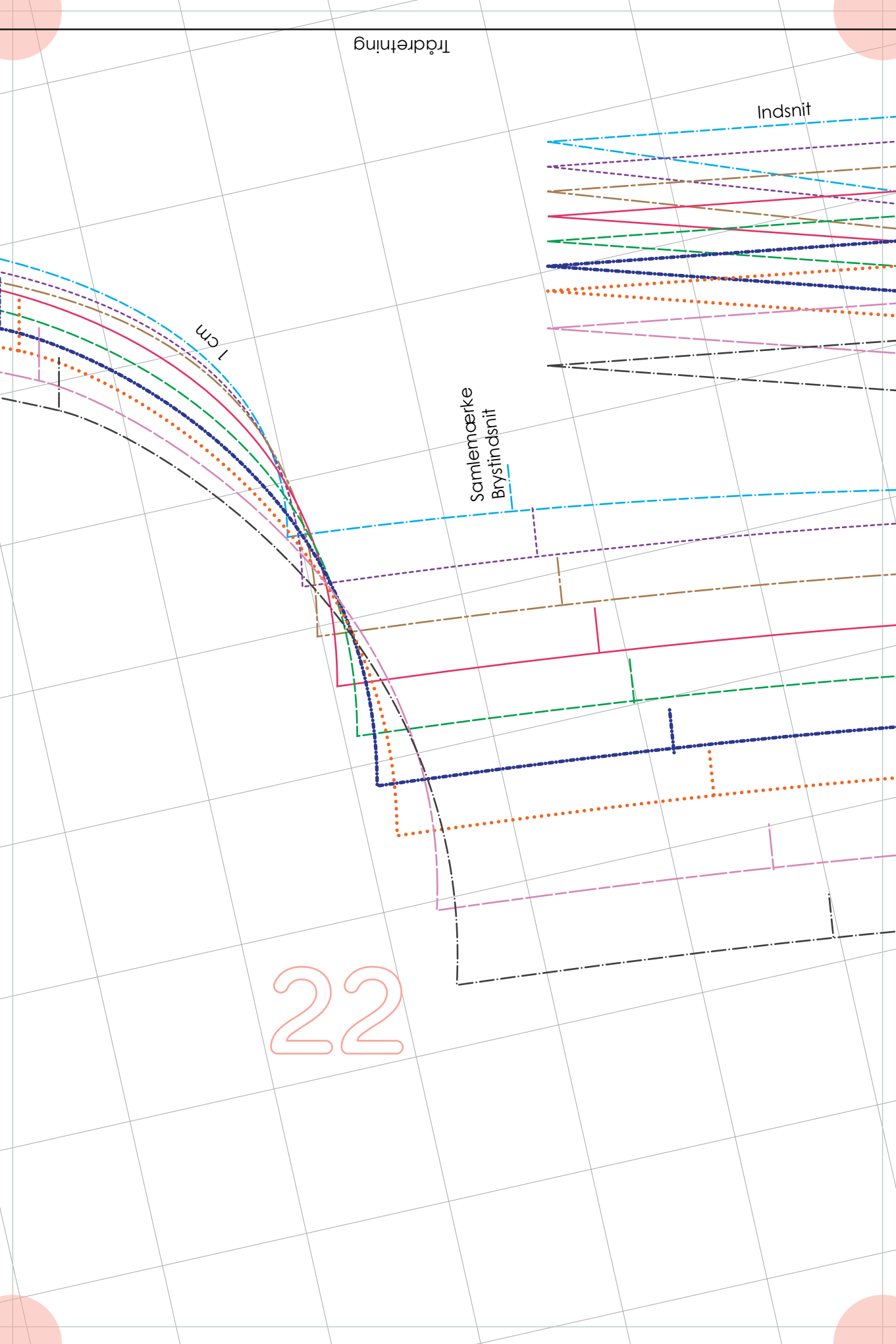


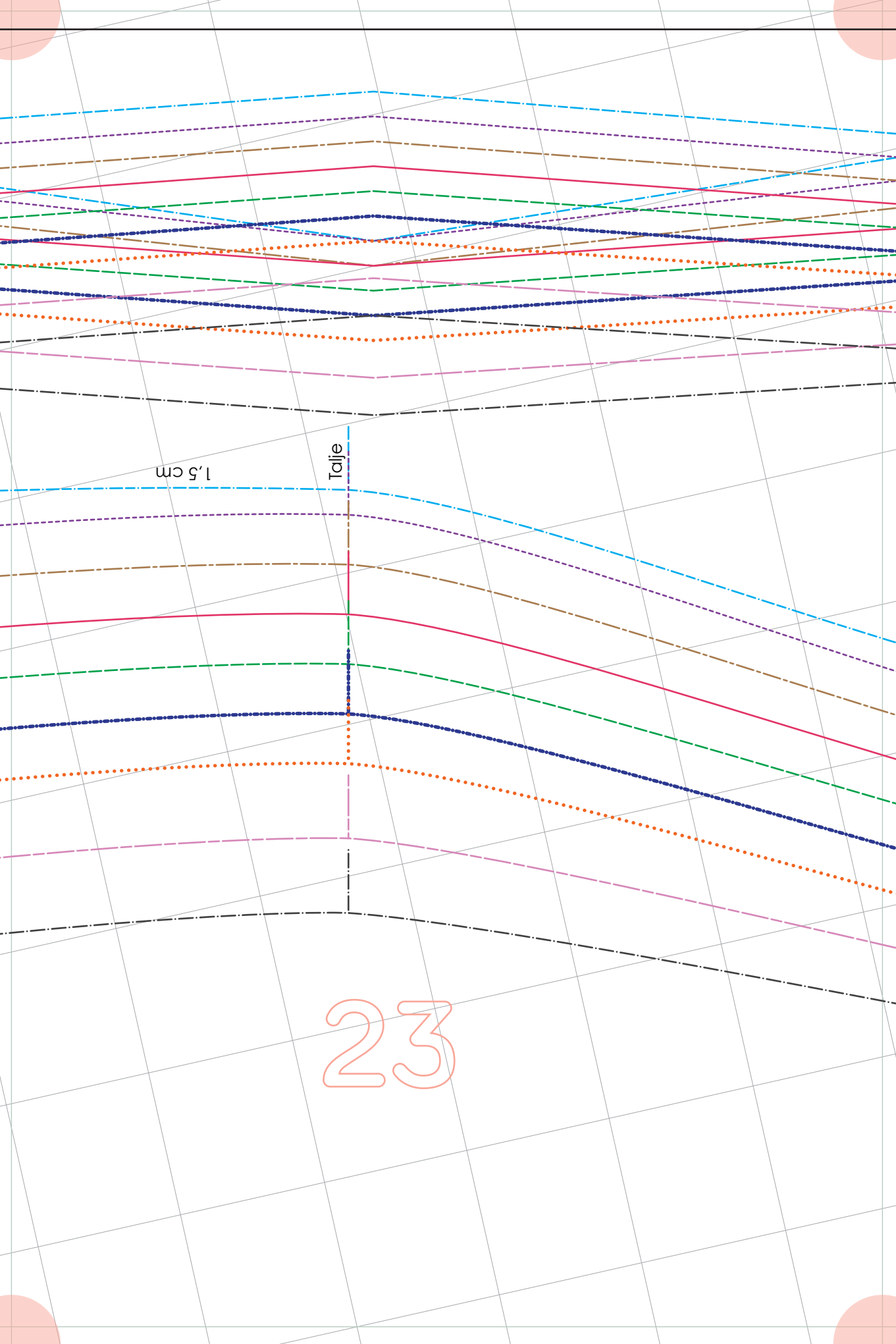
Indsnit

1 cm

Samlemærke
Brystindsnit

22

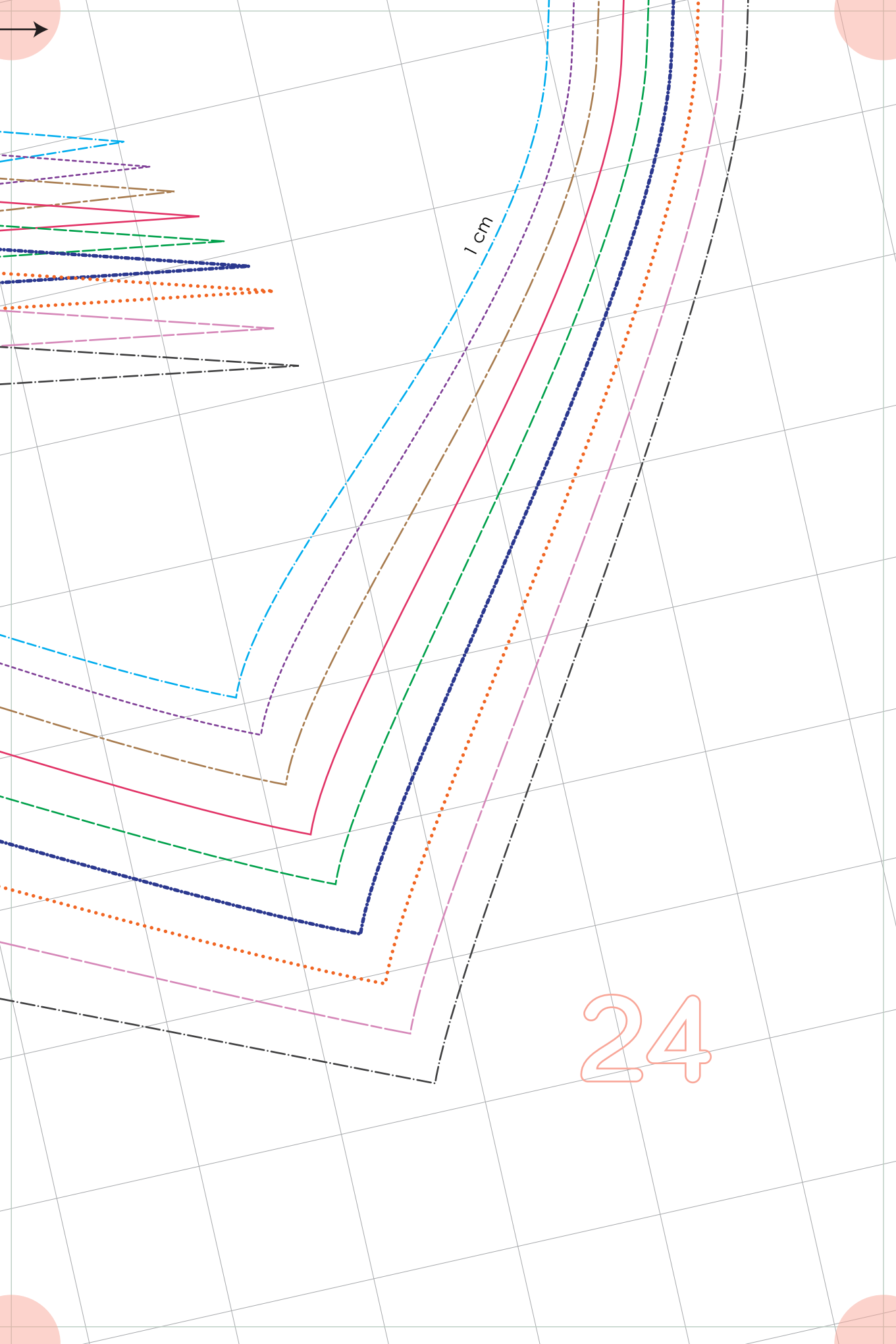




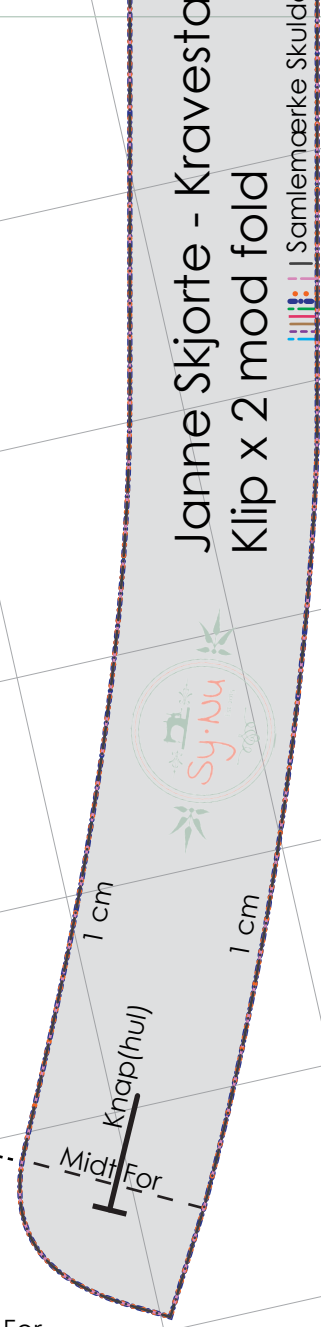
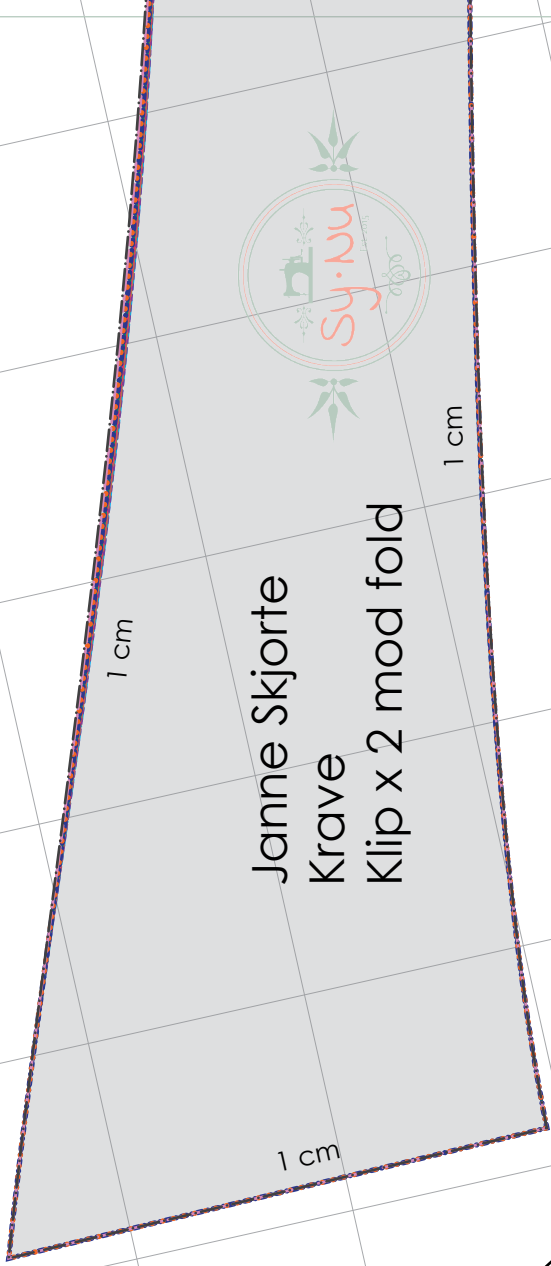
1,5 cm

Tolje

23



1 cm



Kraven skal gå til Midt For på standen.